

GROSVENOR HOUSE SUITES

LEGENDSM
— — — — —
Preferred
HOTELS & RESORTS

*Preferred*TM
RESIDENCES



GROSVENOR HOUSE SUITES

MOUNT
STREET W1
CITY OF WESTMINSTER

GROSVENOR HOUSE SUITES

AN OVERVIEW



Superb Location



Airport 16mi/50mins



Fully Equipped Kitchens



24-Hour Concierge



Guest-Only
Access



All-Day Dining

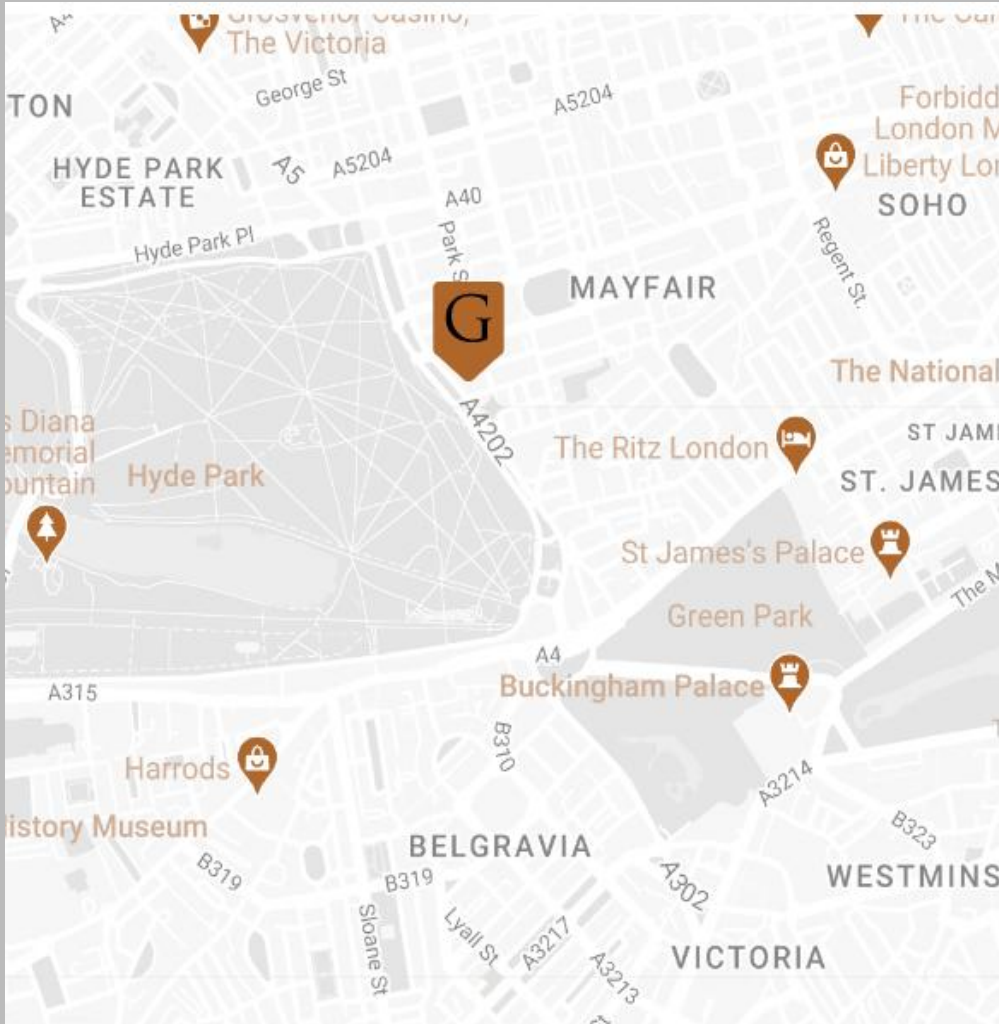


24-Hour Fitness Centre



Discreet & Secure

GROSVENOR
HOUSE SUITES



A UNIQUELY MAYFAIR EXPERIENCE

Situated at a superb address on the corner of Park Lane and Mount Street, Grosvenor House Suites is just moments from the best of London.

The exclusive boutique shops, restaurants, and bars of Mount Street are right on your doorstep, with renowned department stores, including Selfridges and Harrods, just a short walk away.

Grosvenor House Suites offers a unique experience for both short and extended stays, combining the refined services of a luxury property with the privacy, comfort, and generous living space of a contemporary residence in Mayfair.

GROSVENOR
HOUSE SUITES



ICONIC ARCHITECTURE & RICH IN HISTORY

Built in the 1800s on the site of an earlier royal residence by Robert Grosvenor, the 1st Marquess of Westminster.

Known for its grand arrival hall, sweeping staircase, imposing grand fireplace, and magnificent chandelier in the 1800s, these elements have been brought into the 21st century with our stunning glass Atrium, scenic lifts replacing the staircase, and modern interpretations of the fireplace and chandelier.

GROSVENOR
HOUSE SUITES



OUR STUDIOS & SUITES

130 suites offering unrivalled spacious accommodations, all with a range that spans studios to one-, two-, three-, four-, and five-bedroom Penthouses, fully fitted kitchens.

18 Studio Suites | 64 One-Bedroom Suites | 36 Two-Bedroom Suites | 4 Three-Bedroom Suites |
4 London Suites | 4 Penthouses

GROSVENOR
HOUSE SUITES

OUR STUDIOS & SUITES

FEATURES

(Included in all of our rooms)

- Views of Mayfair, Hyde Park & Atrium
- Spacious Layouts
- Individually Controlled Air Conditioning
- Fully Equipped Kitchen
- Nespresso Machine
- Digital Television with 100+ Channels
- Door Security Camera and Entry Controls
- Touch-Screen Room Controls
- Electronic Black-Out Blinds
- Mood Lighting
- Luxury Bathrobes and Bathroom Amenities



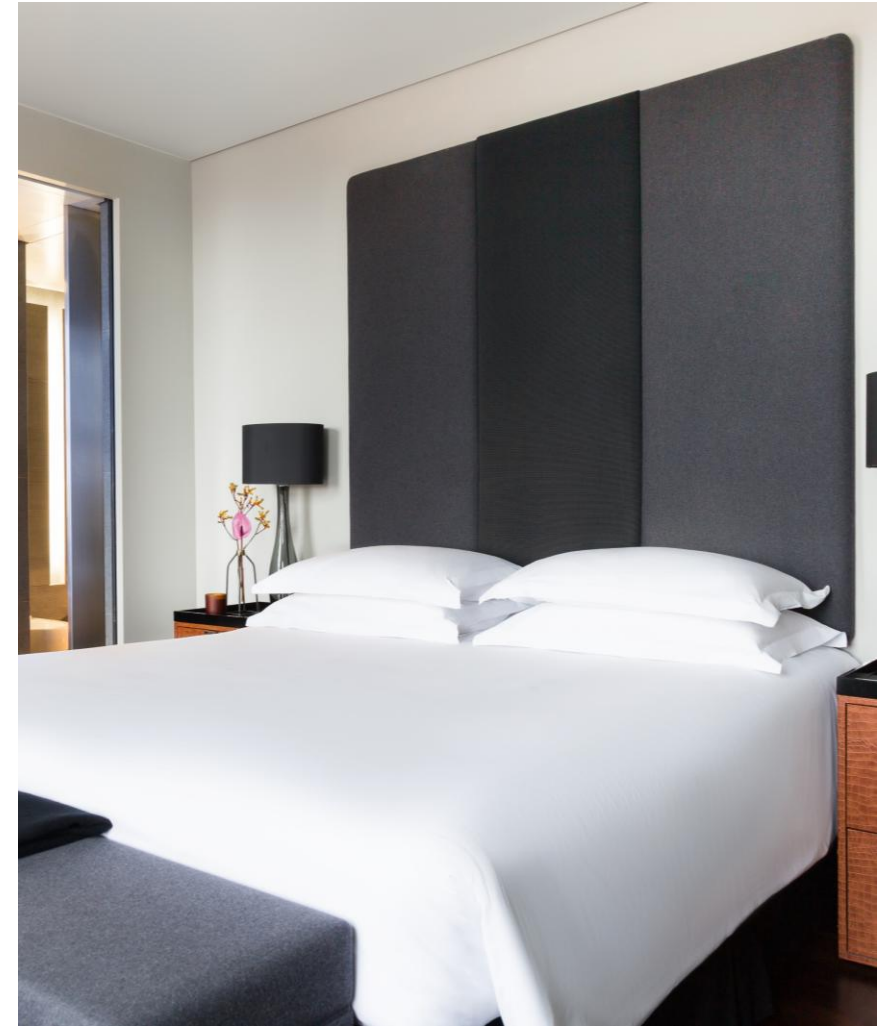
GROSVENOR
HOUSE SUITES

STUDIO & STUDIO DELUXE – 34M² TO 53M² OR 364FT² TO 566FT²



GROSVENOR
HOUSE SUITES

ONE-BEDROOM SUITE – 45M² TO 75M² OR 486FT² TO 807FT²



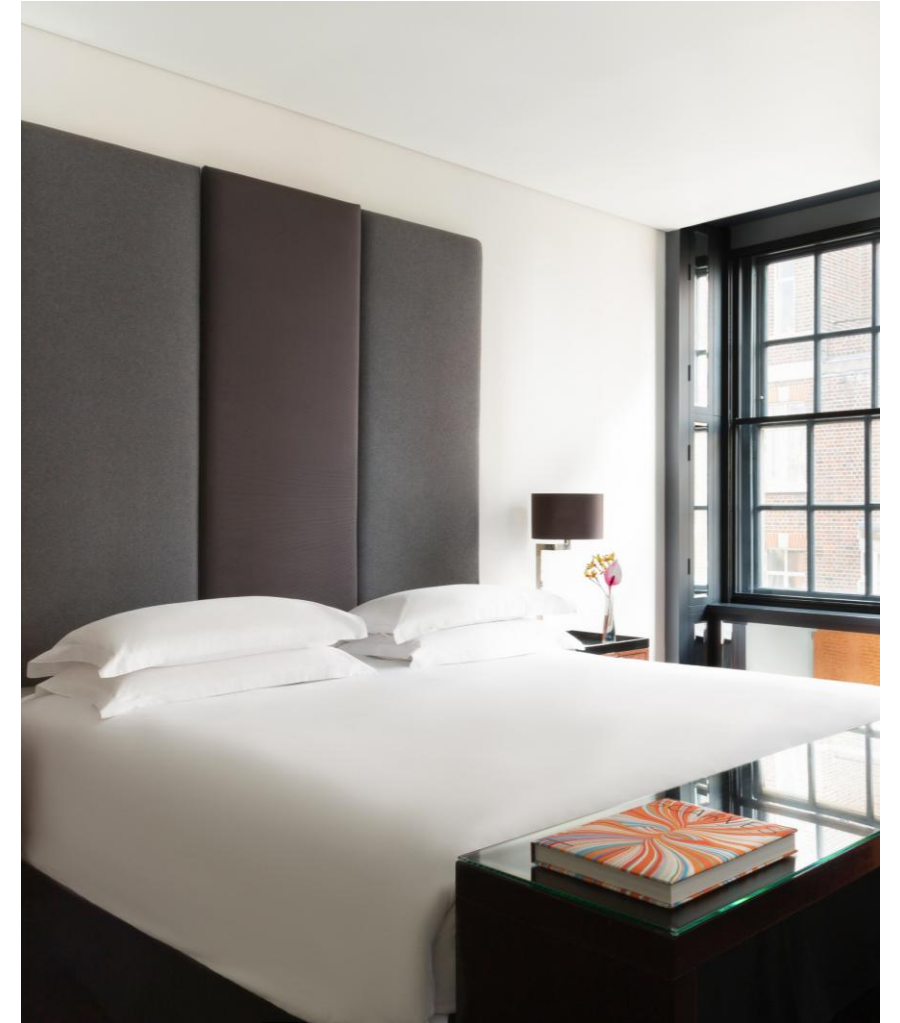
GROSVENOR
HOUSE SUITES

TWO-BEDROOM SUITE – 84M² TO 123M² OR 905FT² TO 1,324FT²



GROSVENOR
HOUSE SUITES

THREE-BEDROOM SUITE – 131M² OR 1,410FT²



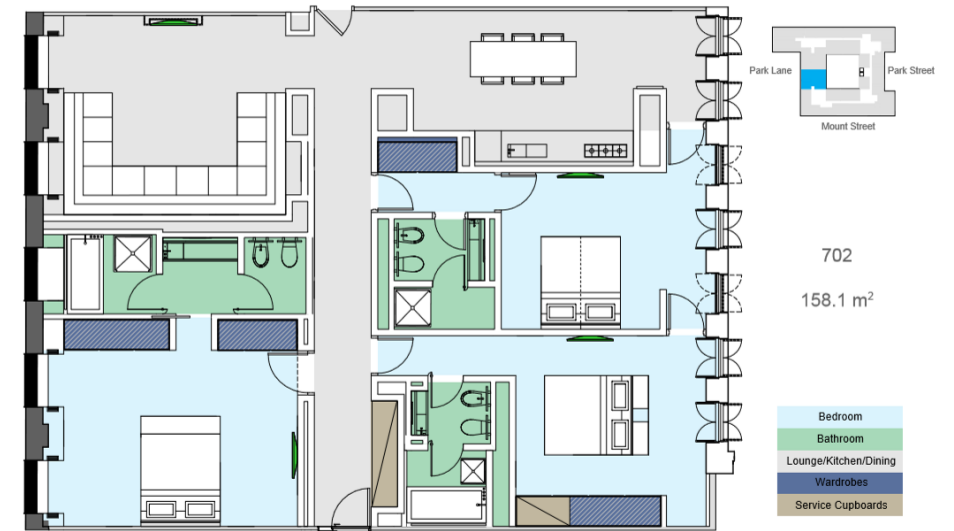
GROSVENOR
HOUSE SUITES



LONDON SUITES

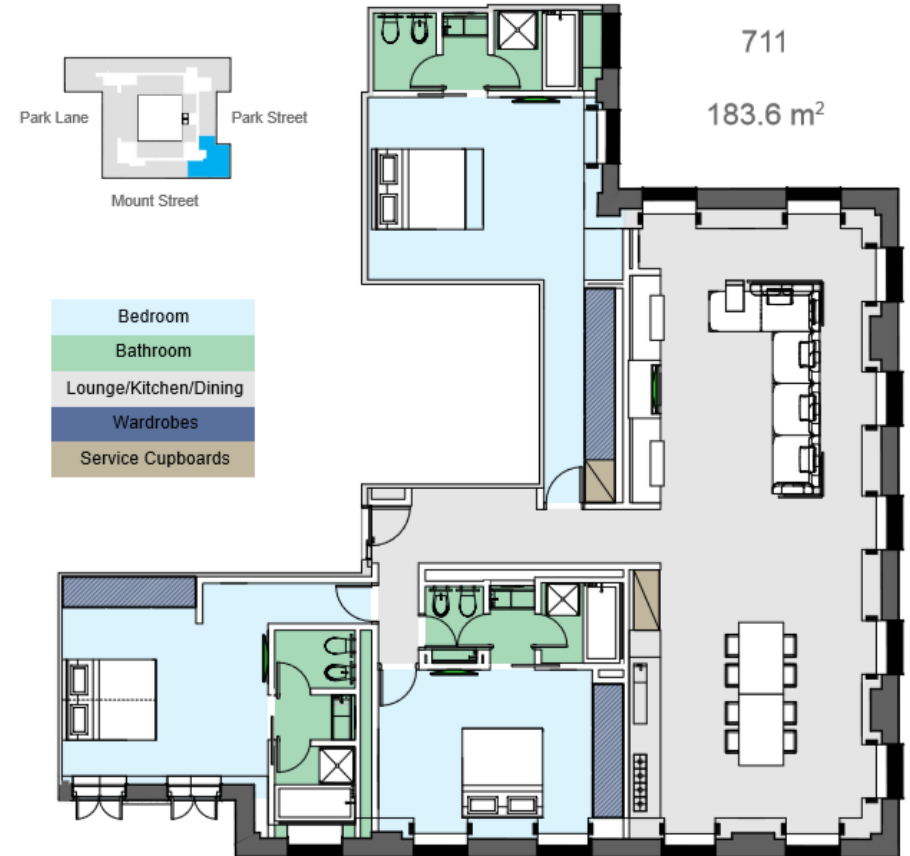
GROSVENOR
HOUSE SUITES

SERPENTINE SUITE – 158M² OR 1,702FT²



GROSVENOR
HOUSE SUITES

WESTMINSTER SUITE – 183M² OR 1976FT²



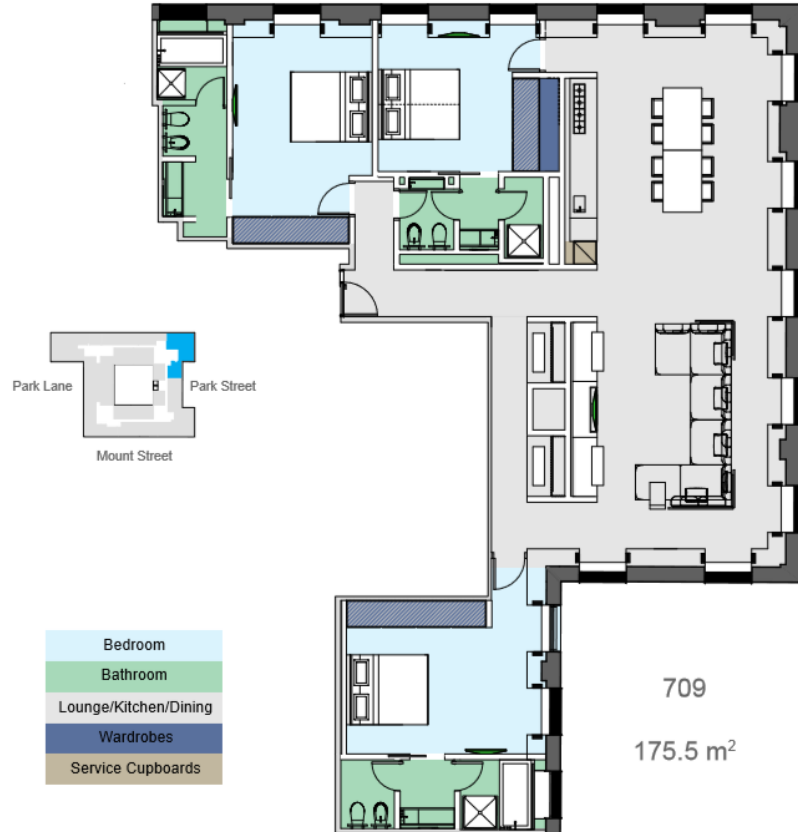
GROSVENOR
HOUSE SUITES

HYDE PARK SUITE – 223M² OR 2,407FT²



GROSVENOR
HOUSE SUITES

CITY SUITE – 175M² OR 1,889FT²



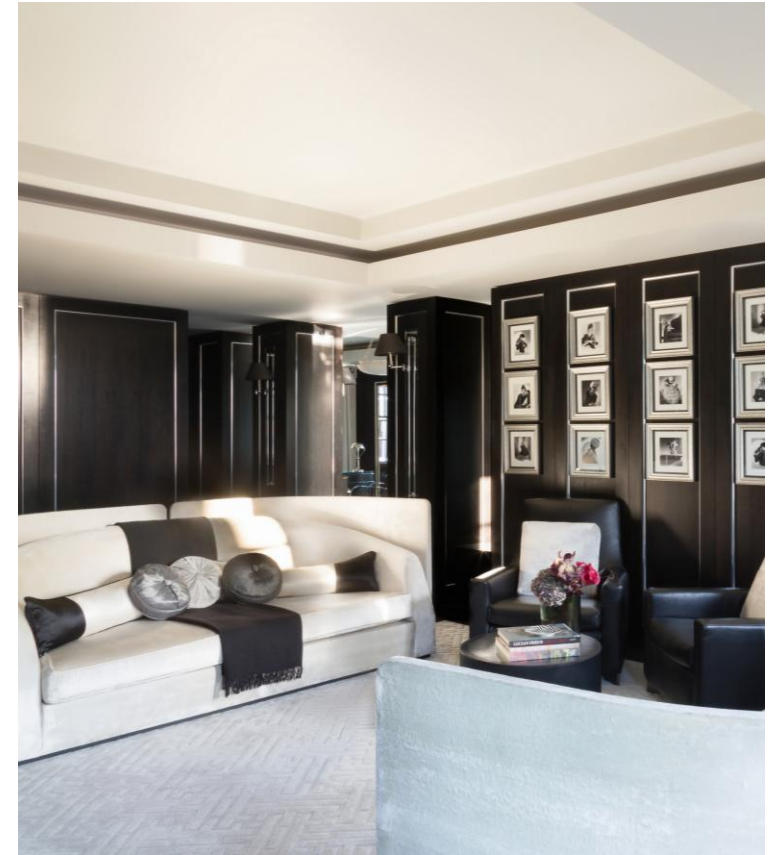
GROSVENOR
HOUSE SUITES



PENTHOUSES

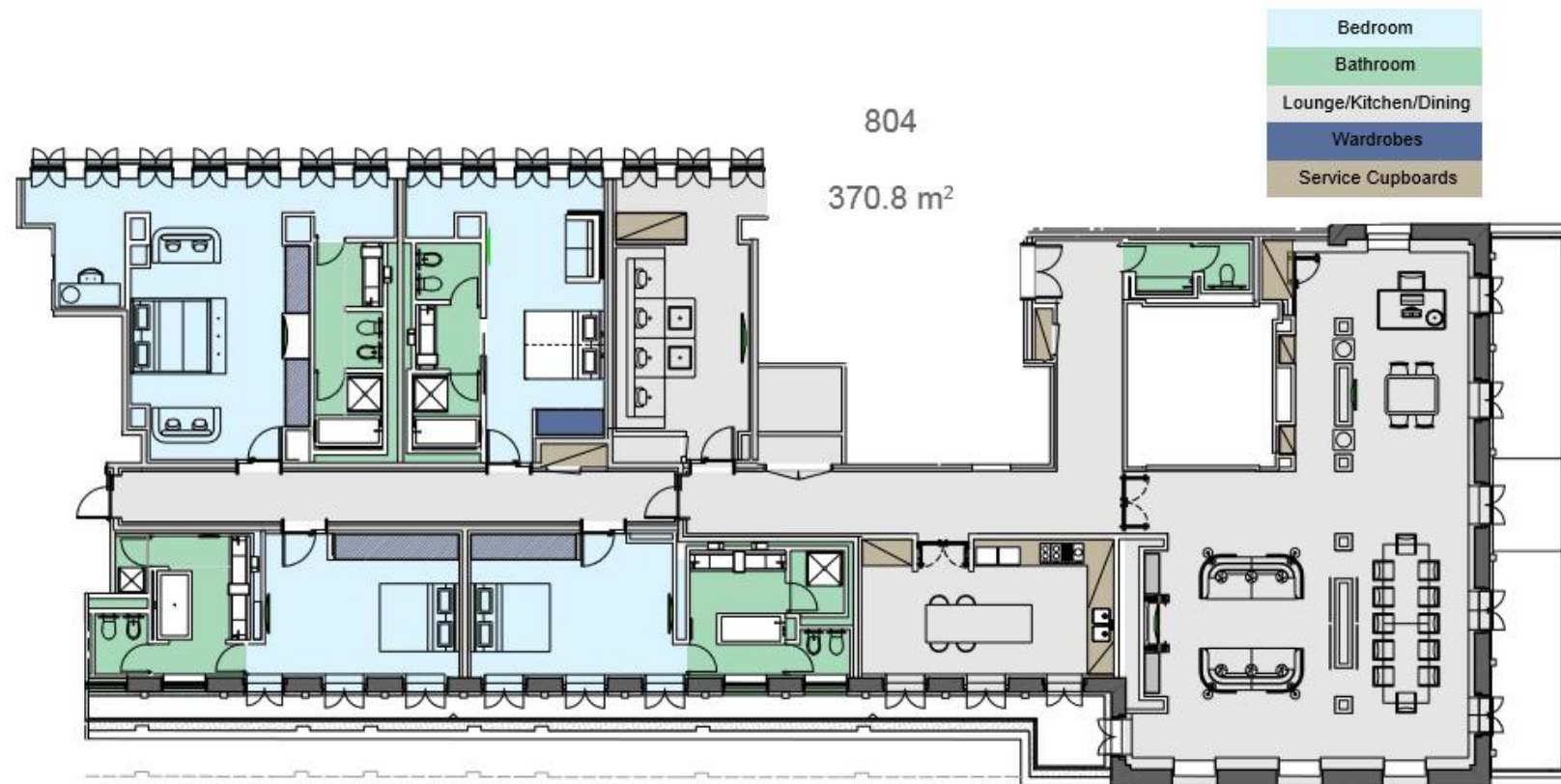
GROSVENOR
HOUSE SUITES

MAYFAIR PENTHOUSE – 370M² OR 3,991FT²



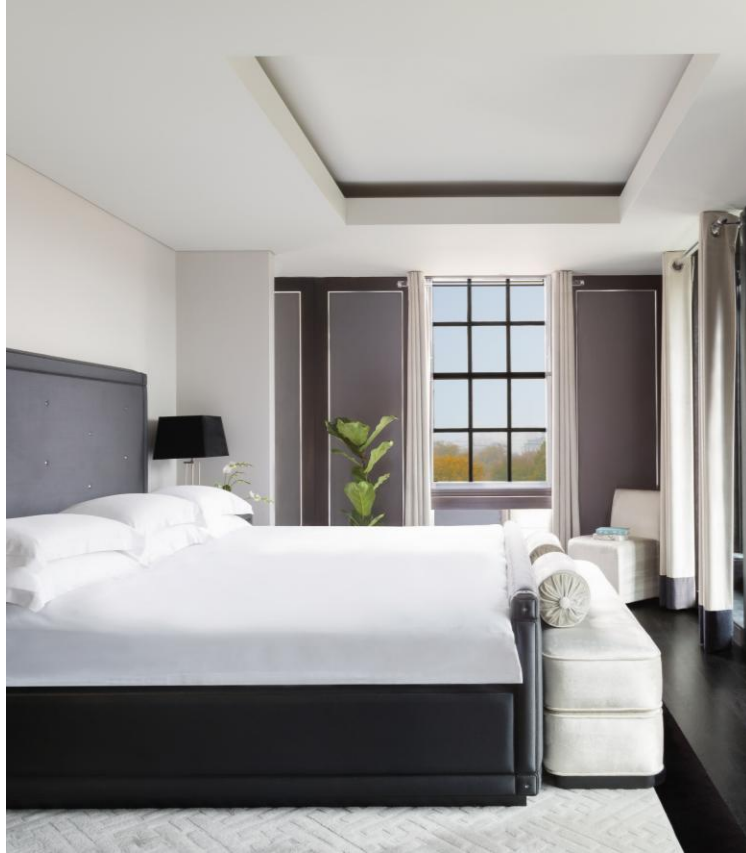
GROSVENOR
HOUSE SUITES

MAYFAIR PENTHOUSE – 370M² OR 3,991FT²



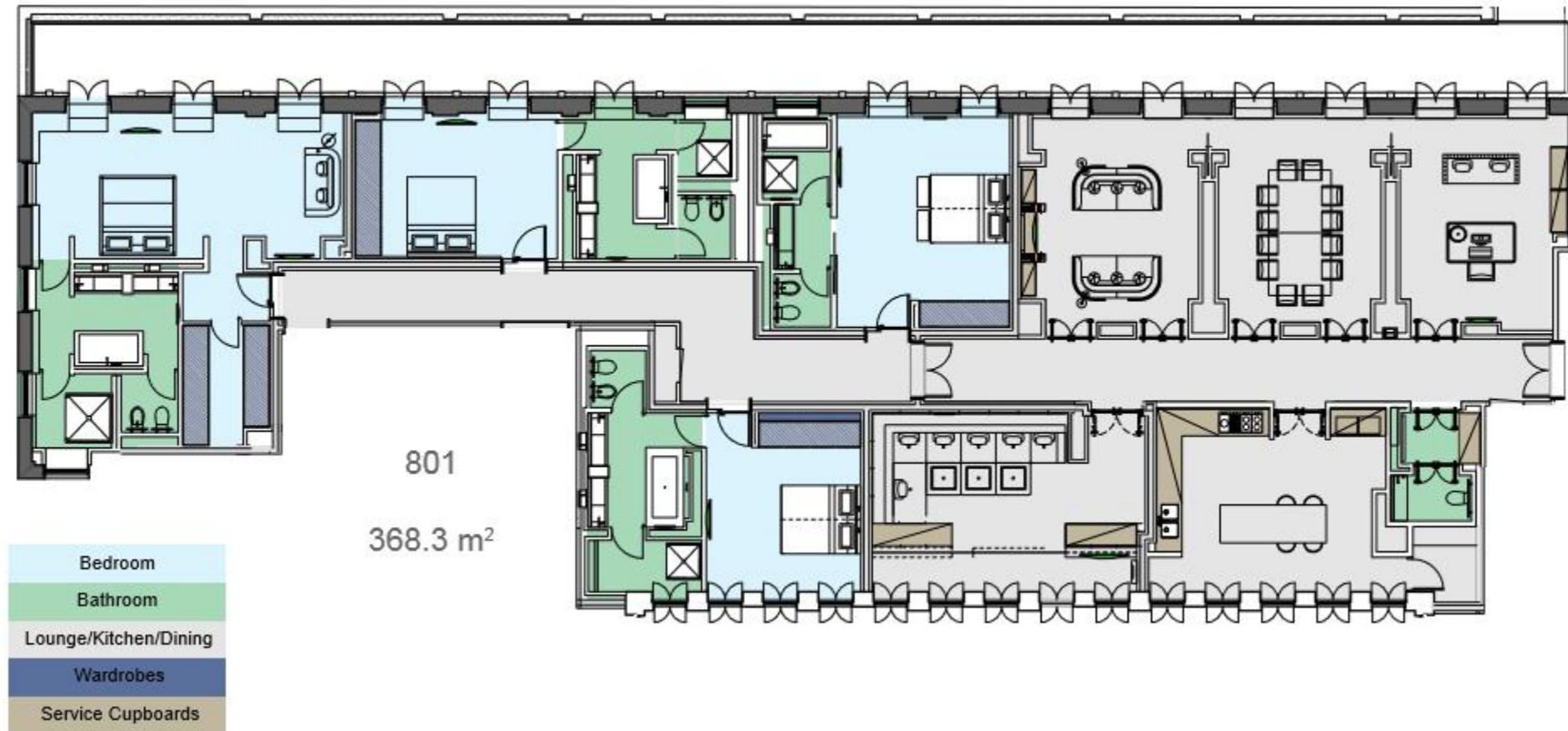
GROSVENOR
HOUSE SUITES

KNIGHTSBRIDGE PENTHOUSE – 368M² OR 3,964FT²



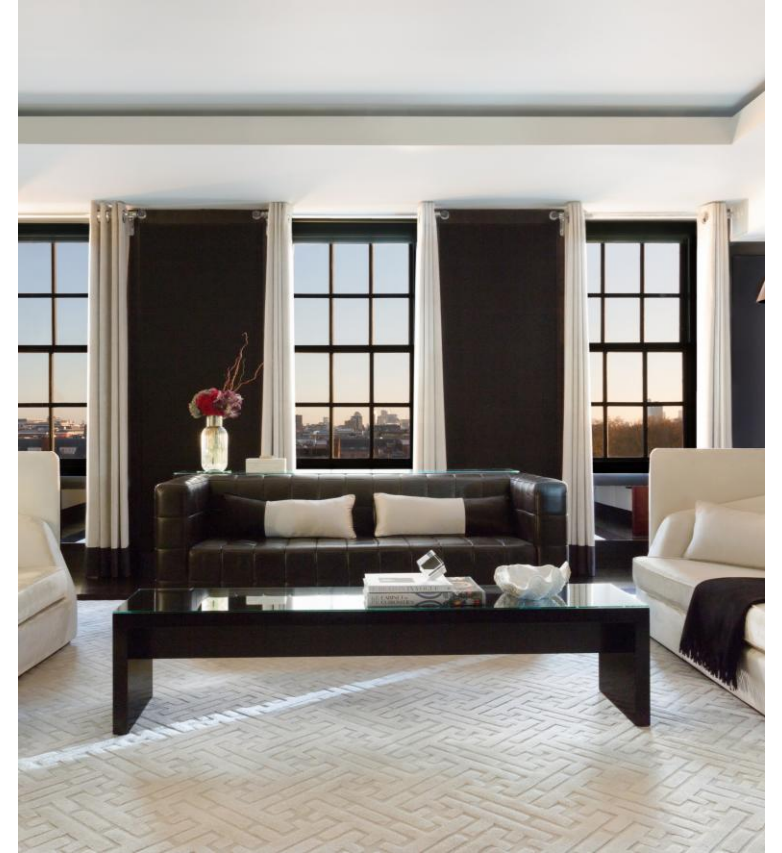
GROSVENOR
HOUSE SUITES

KNIGHTSBRIDGE PENTHOUSE – 368M² OR 3,964FT²



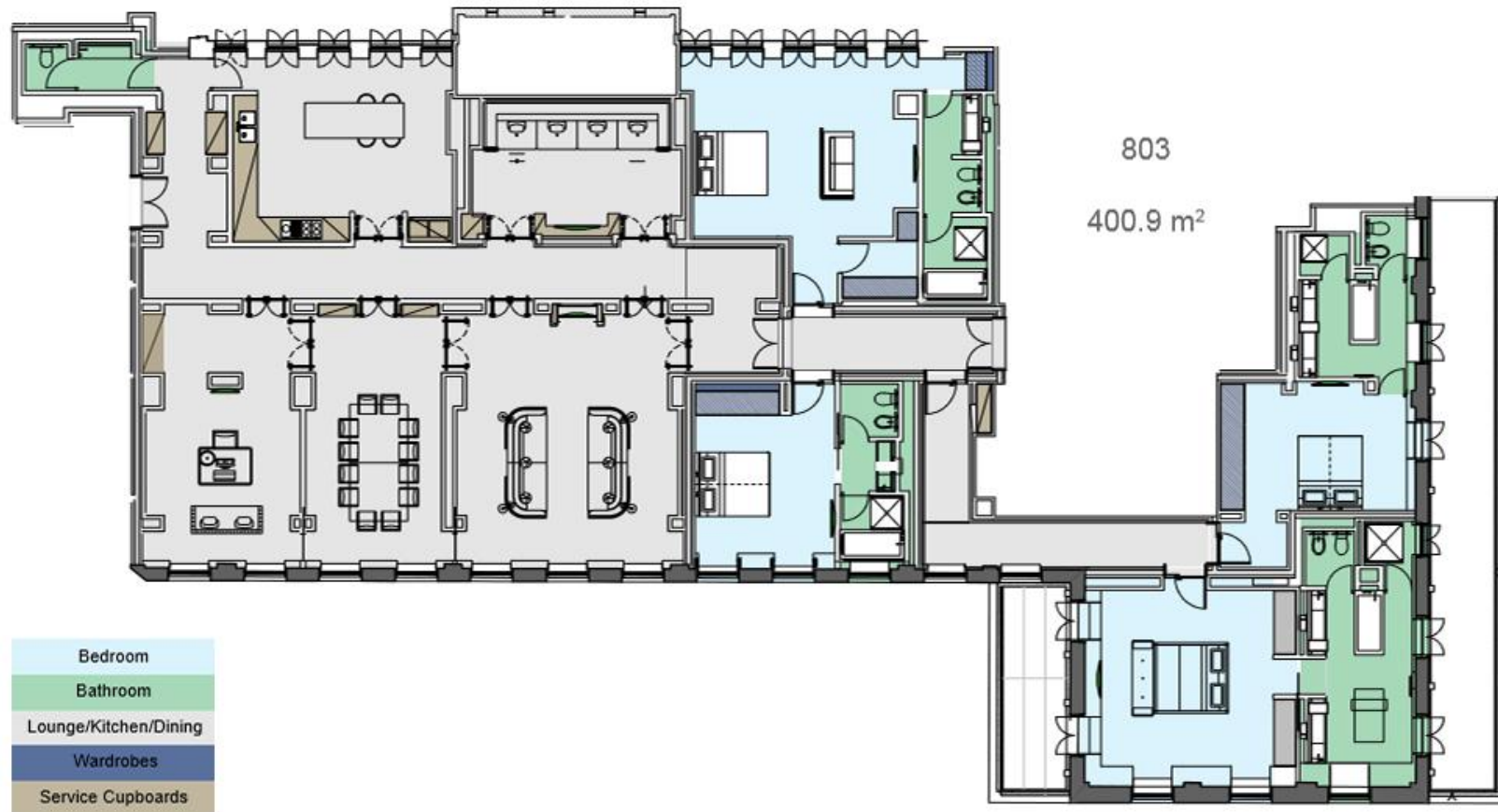
GROSVENOR
HOUSE SUITES

KENSINGTON PENTHOUSE – 400M² OR 4,315FT²



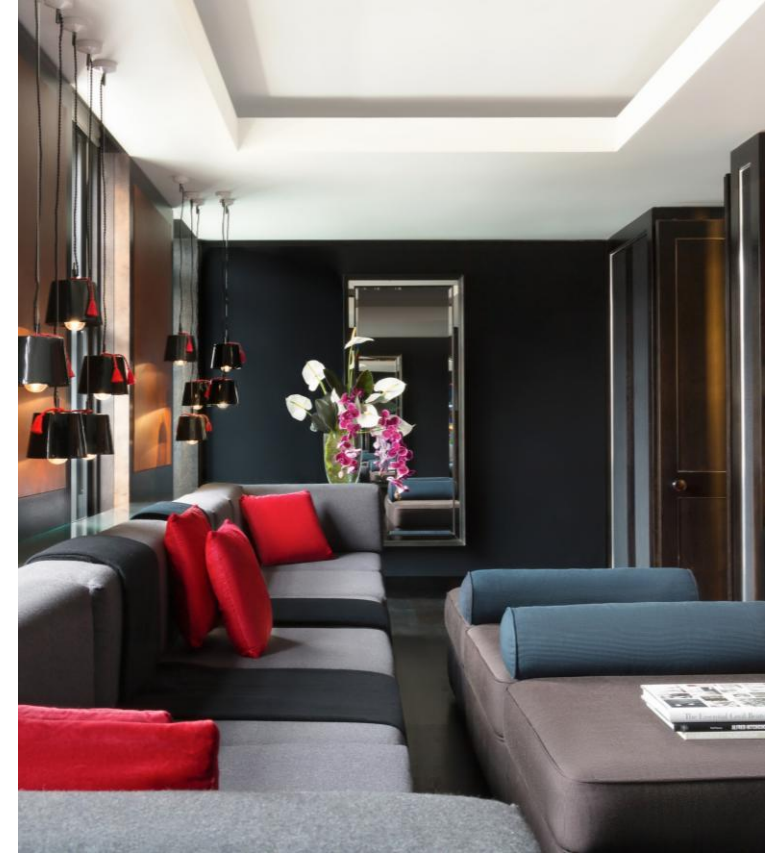
GROSVENOR
HOUSE SUITES

KENSINGTON PENTHOUSE – 400M² OR 4,315FT²



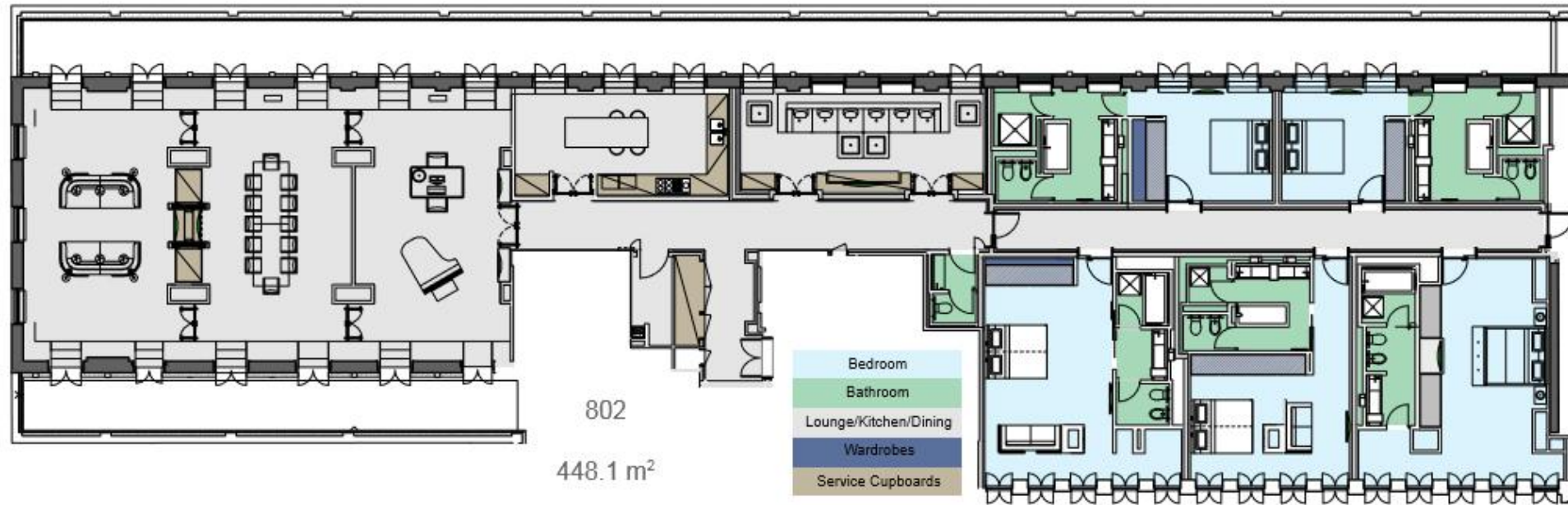
GROSVENOR
HOUSE SUITES

GROSVENOR PENTHOUSE – 448M² OR 4,823FT²



GROSVENOR
HOUSE SUITES

GROSVENOR PENTHOUSE – 448M² OR 4,823FT²



GROSVENOR
HOUSE SUITES

THE ATRIUM



GROSVENOR
HOUSE SUITES

THE ATRIUM

(All-Day Dining)

Breakfast, Lunch, Afternoon Tea & Dinner

Elegant All-Day Dining

Bespoke Private Dining Experiences

Naturally Lit, Striking Space

Ideal for Small Meetings, Networking, & Entertaining



GROSVENOR
HOUSE SUITES



FITNESS

The Fitness Suite is equipped with the latest Technogym™ training equipment and is open 24 hours a day. Our personal trainer, Kathryn Tilbury from Precision Movement, is on hand to assist guests with all they need, from specialist back pain and injury care to post-natal recovery exercises and expert fitness training.

GROSVENOR
HOUSE SUITES

WELLNESS

Pre-booked in-room spa and beauty services are available for residents from top service providers in Mayfair. A range of rejuvenating treatments, from massages and facials to manicures and pedicures, can be enjoyed from the comfort of the guests suite.



GROSVENOR
HOUSE SUITES



GROSVENOR
HOUSE SUITES

Thank you

LUIS PRETO

Sales Manager – UK, Europe & Asia-Pacific

Email: luis.preto@grosvenorhousesuites.com
[Digital Business Card](#)

DDI: +44 (0) 20 7518 4882

Mobile: +44 (0) 7557 804 644