



WETHERELL
MAYFAIR'S FINEST PROPERTIES



CARRINGTON STREET, W1J

£765,000

An immaculately presented one bedroom apartment with resident caretaker.

Situated in the heart of Shepherd Market, north of Green Park and within easy reach Mayfair's finest amenities, this sizeable one-bedroom apartment has been refurbished to an exceptional standard throughout. Can be purchased as an SPV which is UK based and flat 19 is the sole asset.

Tenure - Leasehold, Circa 133 years remaining
Annual service charge - Approximately £3,400

CARRINGTON STREET IS A QUIET CUL-DE-SAC CLOSE TO A RANGE OF RESTAURANTS AND BOUTIQUES AND JUST MOMENTS FROM THE VAST GREEN SPACE OF BOTH HYDE PARK AND GREEN PARK.

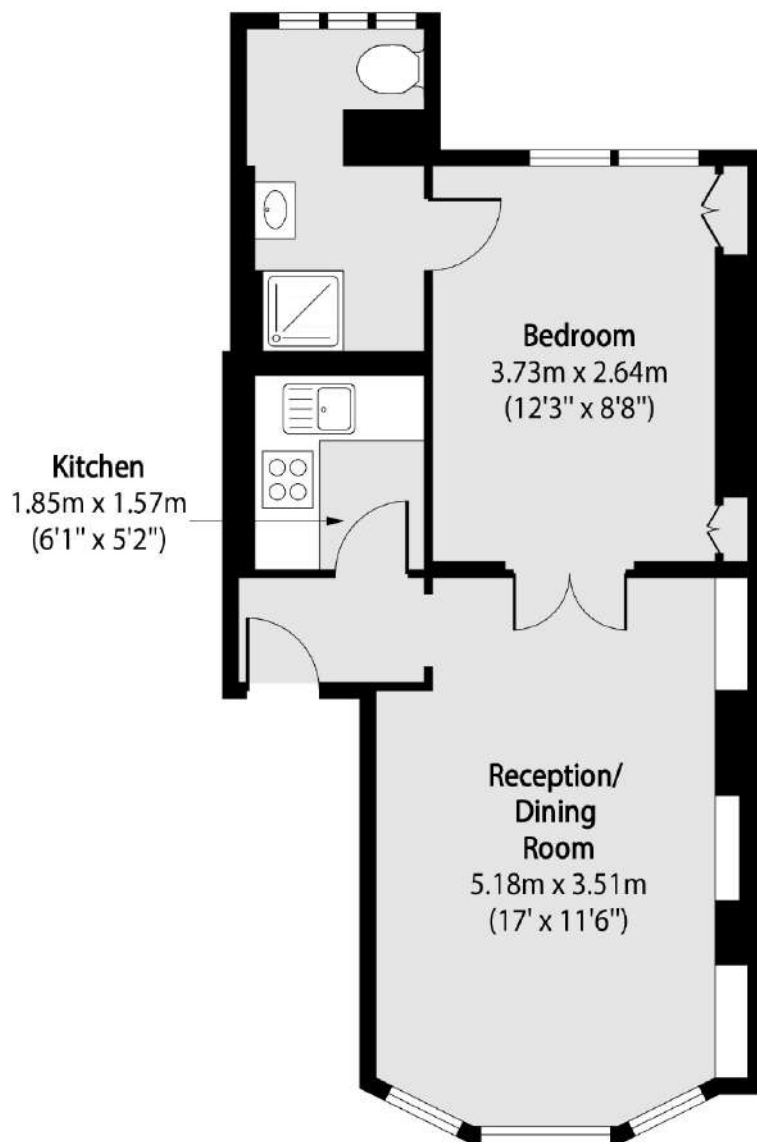


FEATURES

- Immaculately Presented • One Bedroom • One Bathroom • One Reception Room • Resident Caretaker • 421 sq.ft •



CARRINGTON STREET, LONDON, W1J



Total area (approx): 39.11 sq m (421 sq. ft)



WETHERELL
MAYFAIR'S FINEST PROPERTIES

102 Mount Street,
London, W1K 2TH
T: 020 7529 5566
E: sales@wetherell.co.uk

We aim to make our particulars both accurate and reliable. However they are not guaranteed; nor do they form part of an offer or contract. If you require clarification on any points then please contact us, especially if you're traveling some distance to view. Please note that appliances and heating systems have not been tested and therefore no warranties can be given as to their working order.

wetherell.co.uk