



# WETHERELL

MAYFAIR'S FINEST PROPERTIES



## GREEN STREET, W1K

### £3,500 PER WEEK

A well-presented three-bedroom duplex apartment set over the top two floors of this purpose-built block with balcony and private roof terrace.

Situated in the favoured eastern end of Green Street within easy reach of North Audley Street and all its amenities, this distinct building was built as part of ten gabled red brick houses in 1983. On the third floor there is a large reception room with high ceilings, feature fireplace and two French windows leading on to a deep, full width balcony. The open plan kitchen/dining room is located at the rear of the property with 4 large sash windows allowing an abundance of natural light.

The fourth floor comprises the 24 ft wide principal bedroom suite with dressing room and en suite bathroom and walk in shower. There are two further bedrooms and a separate family bathroom. External stairs from the fourth floor lead to the impressive private roof terrace, a rare jewel in the crown for Mayfair property. The apartment has lift access and air conditioning.

GREEN STREET IS SITUATED BETWEEN NORTH AUDLEY STREET AND PARK LANE. IT IS WELL PLACED FOR ACCESS TO THE INTERNATIONALLY RENOWNED SHOPS, RESTAURANTS AND OTHER AMENITIES OF MAYFAIR AND THE WEST END.





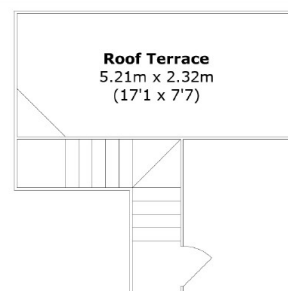
## FEATURES

- Prime Mayfair Address • Three Bedrooms • Two Bathrooms • Private Roof Terrace • Lift • Air Conditioning •

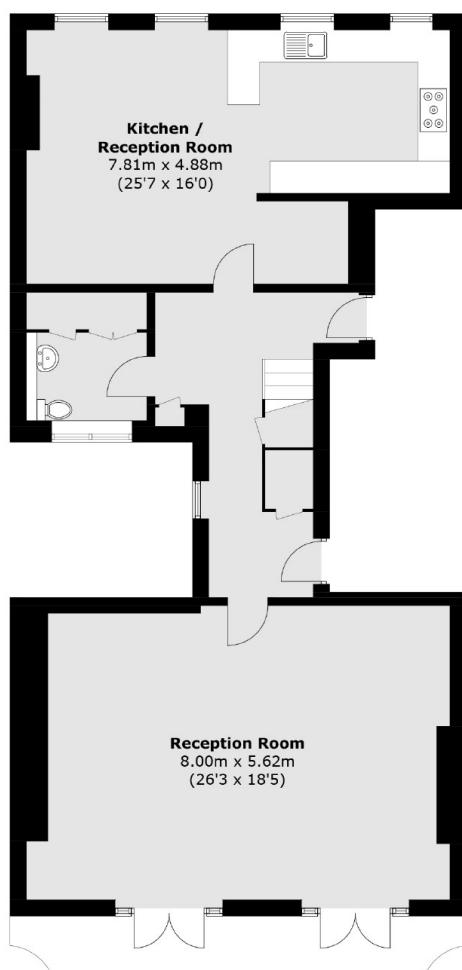




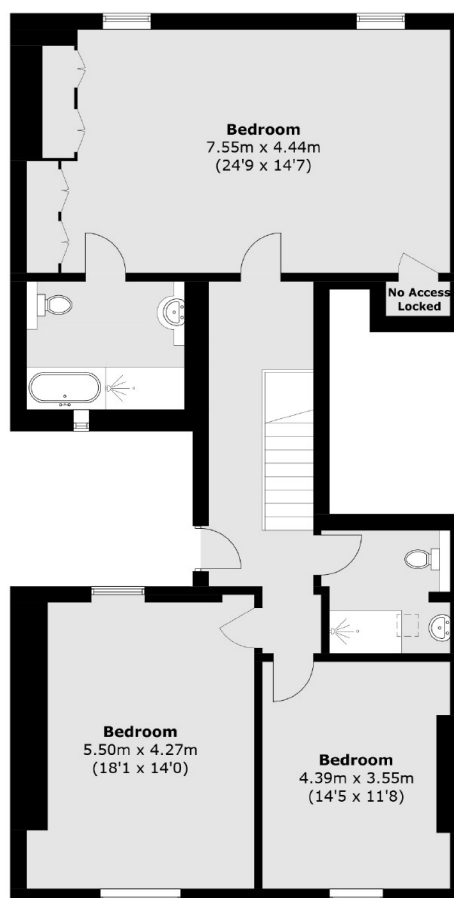
# GREEN STREET, LONDON, W1K



**Fifth Floor**



**Third Floor**



**Fourth Floor**

Total area (approx.): 202.6 sq. m (2,180.8 sq. ft)  
Roof Terrace : 16.6 sq. m (178.7 sq. ft)



**WETHERELL**  
MAYFAIR'S FINEST PROPERTIES

102 Mount Street,  
London, W1K 2TH  
T: 020 7529 5566  
E: [sales@wetherell.co.uk](mailto:sales@wetherell.co.uk)

We aim to make our particulars both accurate and reliable. However they are not guaranteed; nor do they form part of an offer or contract. If you require clarification on any points then please contact us, especially if you're traveling some distance to view. Please note that appliances and heating systems have not been tested and therefore no warranties can be given as to their working order.

[wetherell.co.uk](http://wetherell.co.uk)