



WETHERELL
MAYFAIR'S FINEST PROPERTIES



HAYS MEWS, W1J

£2,950 PER WEEK

Beautifully renovated six storey, three bedroom townhouse located within a prestigious mews close to Berkeley Square.

The principal bedroom spans the whole first floor with luxury bathroom including separate shower and his and hers sink, while the lower ground floor boasts a modern cinema room which doubles as further family space.

The house offers two further en suite bedrooms on the second floor, and a large dining area, kitchen and reception room on third and fourth floors.

The 230 sq ft roof terrace is located above a substantial reception room which offers excellent entertaining space for guests and family. The house has an impressive five person lift servicing all six floors.

Hays Mews is located between Hill Street and Charles Street, close to Berkeley Square and the open spaces of both Hyde Park and Green Park.

THE INTERNATIONALLY RENOWNED DINING AND SHOPPING FACILITIES OF MOUNT STREET AND THE LOCALE ARE WITHIN A SHORT WALKING DISTANCE.

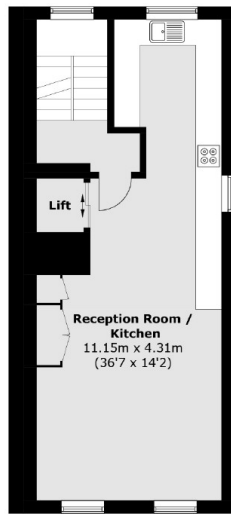


FEATURES

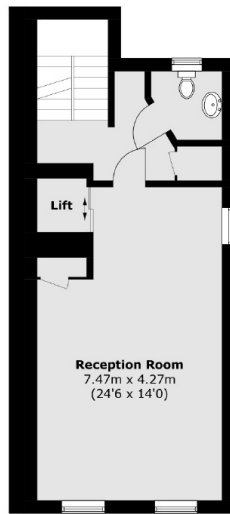
- Recently Renovated • Six Storey House • Secure Garage • Three Double Bedrooms • Four Bathrooms • Passenger Lift •



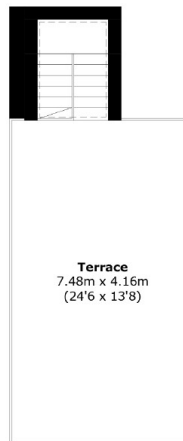
HAYS MEWS, LONDON, W1J



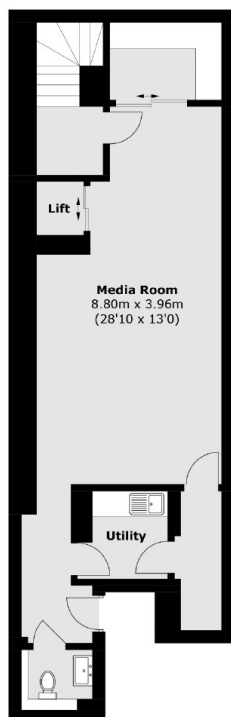
Third Floor



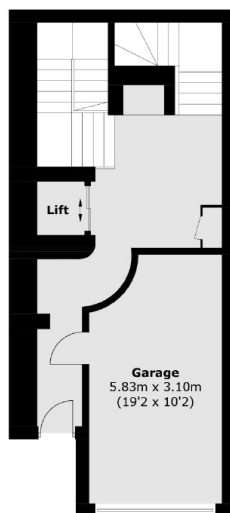
Fourth Floor



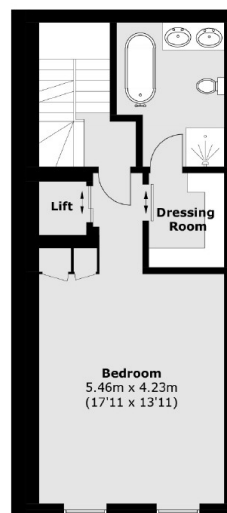
Fifth Floor



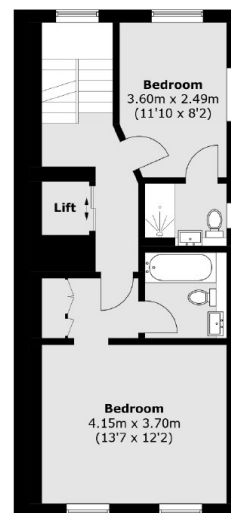
Lower Ground Floor



Ground Floor



First Floor



Second Floor

Total area (approx.): 302.4 sq. m (3,254.9 sq. ft)
Terrace (approx.): 31.1 sq. m (334.8 sq. ft)



WETHERELL
MAYFAIR'S FINEST PROPERTIES

102 Mount Street,
London, W1K 2TH
T: 020 7529 5566
E: sales@wetherell.co.uk

We aim to make our particulars both accurate and reliable. However they are not guaranteed; nor do they form part of an offer or contract. If you require clarification on any points then please contact us, especially if you're traveling some distance to view. Please note that appliances and heating systems have not been tested and therefore no warranties can be given as to their working order.

wetherell.co.uk