



**WETHERELL**  
MAYFAIR'S FINEST PROPERTIES



## NORTH AUDLEY STREET, W1K

### £4,500 PER WEEK

Set on the third, fourth and fifth floors, this exquisite penthouse apartment boasts elegant rooms, bathed in natural light. An abundance of original features, including striking wood panelling, working fire places and intricate cornicing add character to this period property.

The third floor of the apartment provides a fantastic family living space, with a smart Smallbone kitchen/ breakfast room, fitted with Sub Zero and Wolf appliances.

The reception room is clad in dramatic, original oak panelling and features intricate ceiling detail and four large sash windows allowing for views over North Audley Street. Leading off from the reception room lies a spacious dining room, also benefiting from excellent ceiling heights and providing the perfect space for entertaining.

The fourth and fifth floors provide ample space for a 400 square foot principal bedroom and three further bedrooms all of which have en suites.

NORTH AUDLEY STREET IS CONVENIENTLY LOCATED CLOSE TO SELFRIDGES AND ALL THE AMENITIES AND TRAVEL LINKS OF BOND STREET AND MARBLE ARCH UNDERGROUND STATIONS.





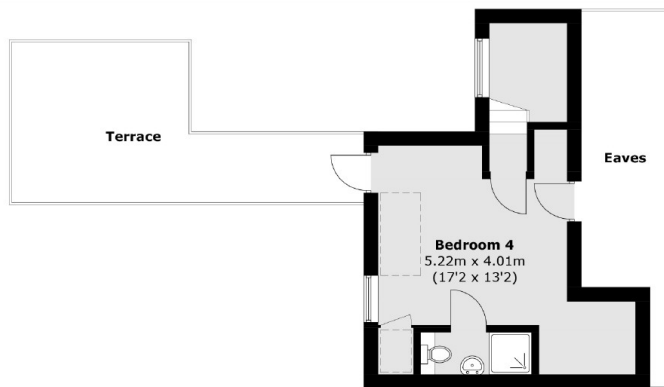
## FEATURES

- Four Double Bedrooms • Four Bathrooms & WC • High Ceilings • Lift Access • Original Oak Panelling • Air Conditioning •

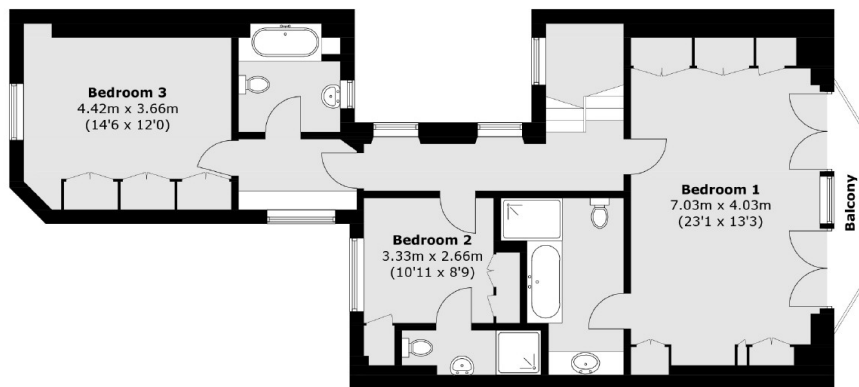




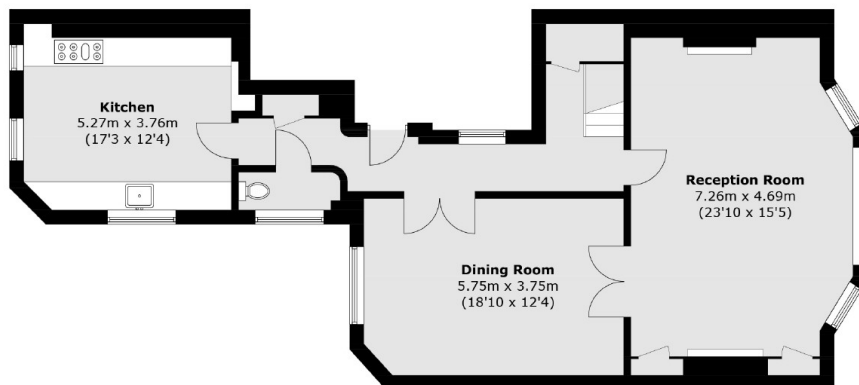
# NORTH AUDLEY STREET, LONDON, W1K



**Fifth Floor**



**Fourth Floor**



**Third Floor**

Total area (approx.): 199.2 sq. m (2,144.2 sq. ft)  
Terrace area (approx.): 20.8 sq. m (223.9 sq. ft)  
(Excluding Eaves)



**WETHERELL**  
MAYFAIR'S FINEST PROPERTIES

102 Mount Street,  
London, W1K 2TH  
T: 020 7529 5566  
E: sales@wetherell.co.uk

We aim to make our particulars both accurate and reliable. However they are not guaranteed; nor do they form part of an offer or contract. If you require clarification on any points then please contact us, especially if you're traveling some distance to view. Please note that appliances and heating systems have not been tested and therefore no warranties can be given as to their working order.

wetherell.co.uk