



# WETHERELL

MAYFAIR'S FINEST PROPERTIES



## NORTH ROW, W1K

### £2,307 PER WEEK

A beautifully presented two bedroom, two bathroom duplex penthouse apartment situated on the fifth & sixth floors of a highly sought after residential development.

The apartment is enviably located a moments walk of Hyde Park and the building offers 24 hour concierge, underground parking via separate negotiation and access to the Marriott Hotels swimming pool, spa / sauna & gym also via separate negotiation.

The reception room has views across Mayfair and the West End and further comprising two double bedrooms both with en-suite bathrooms and a further guest washroom.

Upon entrance to the apartment, the lobby opens onto a large reception room, separate fully integrated modern kitchen. Floor to ceiling windows provide all accommodation with an abundance of natural light & fantastic views. A private staircase leads down to the 5th floor where the bedrooms are located. Two large double bedrooms & provided with fully fitted wardrobes & en-suite bathrooms.

PARK LANE PLACE OFFERS LUXURY ACCOMMODATION IN THE HEART OF MAYFAIR MOMENTS FROM THE EXCLUSIVE BOUTIQUES, SHOPS, RESTAURANTS AND BARS OF PICCADILLY, OXFORD STREET AND BOND STREET. HYDE PARK IS JUST OVER THE ROAD.





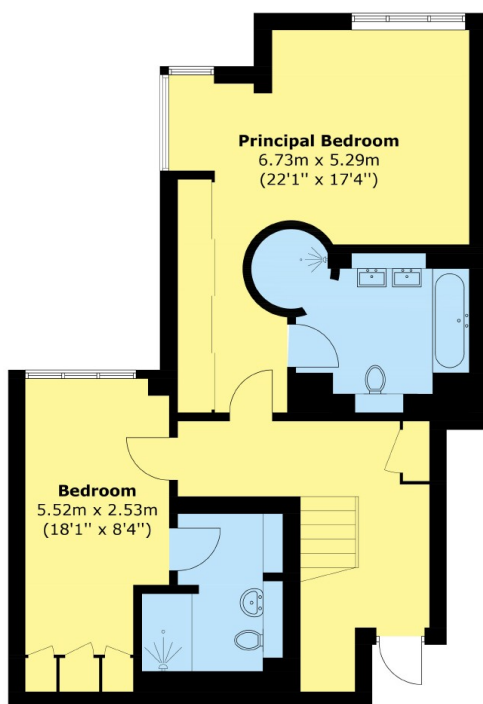
## FEATURES

- Two Large Double Bedrooms • Two Luxury Bathrooms • Contemporary Furniture • Air Conditioning • Penthouse Apartment • Excellent Location •

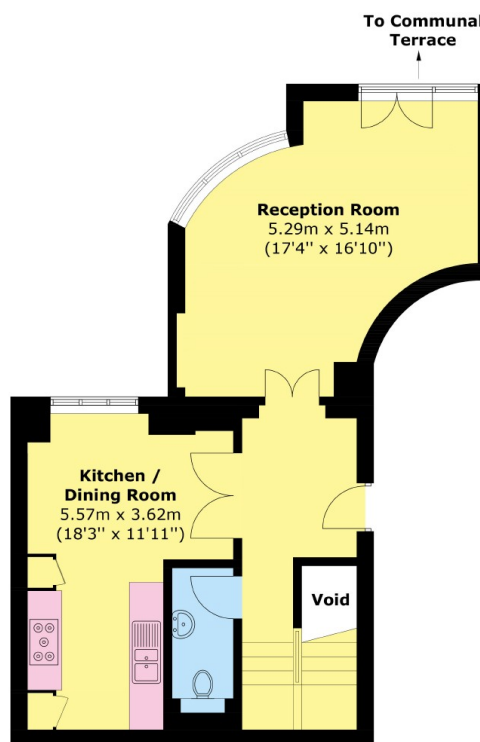




# NORTH ROW, LONDON, W1K



**Fifth Floor**



**Sixth Floor**

Total area (approx.): 122.5 sq. m (1318.6 sq. ft)



**WETHERELL**  
MAYFAIR'S FINEST PROPERTIES

102 Mount Street,  
London, W1K 2TH  
T: 020 7529 5566  
E: [sales@wetherell.co.uk](mailto:sales@wetherell.co.uk)

We aim to make our particulars both accurate and reliable. However they are not guaranteed; nor do they form part of an offer or contract. If you require clarification on any points then please contact us, especially if you're traveling some distance to view. Please note that appliances and heating systems have not been tested and therefore no warranties can be given as to their working order.

[wetherell.co.uk](http://wetherell.co.uk)