



WETHERELL
MAYFAIR'S FINEST PROPERTIES



CHILTERN STREET, W1U

£3,300 PER WEEK

This two bedroom apartment forms part of a luxurious development on one of London's most fashionable streets, Chiltern Street. The apartment has been fitted to an immaculately high standard.

The reception room has plenty of space for both living and dining areas, with floor-to-ceiling windows proving superb natural light and a door leading onto the private balcony which enjoys views across Marylebone.

The bedrooms are good size double rooms with en suite bathrooms and ample storage. The separate kitchen has integrated appliances, marble worktops and LED lighting.

All residents will benefit from 24-hour security, CCTV plus a full concierge service with valet parking to the underground car park. Furthermore they will have access to a state of the art gym and a resident's club lounge plus meeting room.

THE LOCATION IS UNRIVALLED. CHILTERN STREET IS IN MARYLEBONE VILLAGE, WHICH IS A FAVOURITE FOR LOCALS PROVIDING A VILLAGE VIBE IN THE HEART OF CENTRAL LONDON.



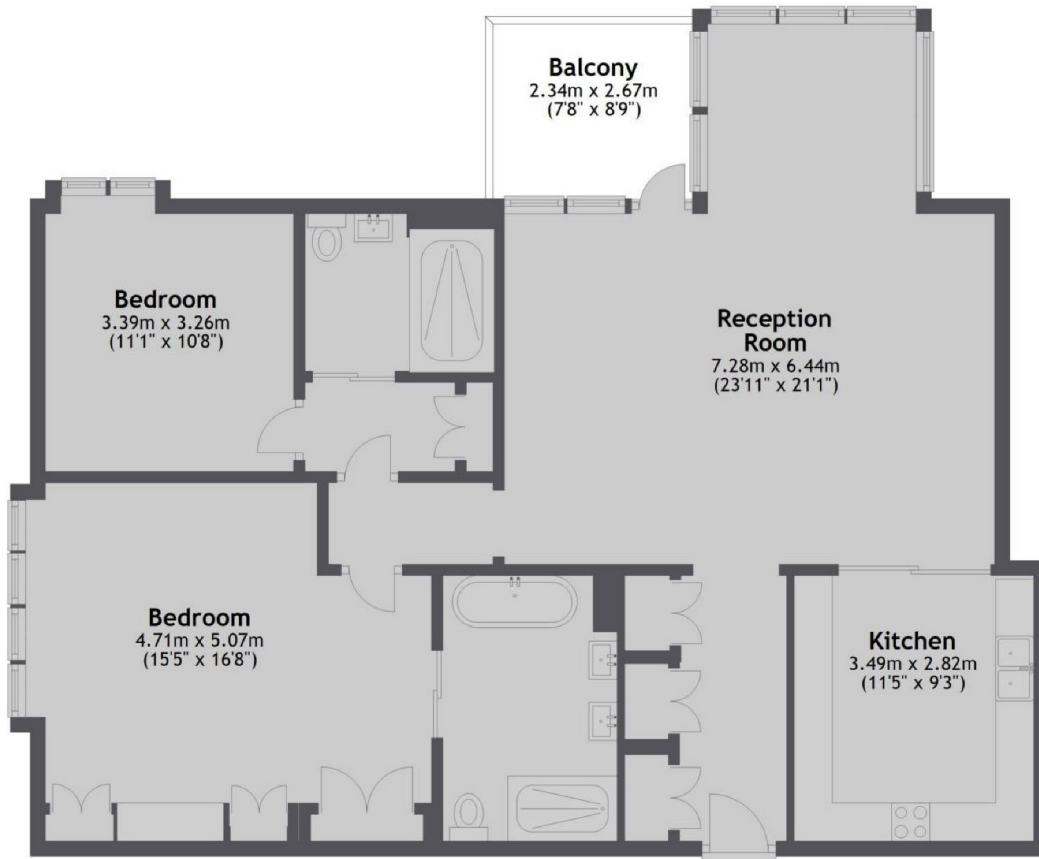
FEATURES

- Two Double Bedrooms • Two Bathrooms • Balcony • 24-Hour Concierge • Gym • Business Lounge •



CHILTERN STREET, LONDON, W1U

Second Floor



Total area: approx. 112.0 sq. metres (1206.0 sq. feet)



WETHERELL
MAYFAIR'S FINEST PROPERTIES

102 Mount Street,
London, W1K 2TH
T: 020 7529 5566
E: sales@wetherell.co.uk

We aim to make our particulars both accurate and reliable. However they are not guaranteed; nor do they form part of an offer or contract. If you require clarification on any points then please contact us, especially if you're traveling some distance to view. Please note that appliances and heating systems have not been tested and therefore no warranties can be given as to their working order.

wetherell.co.uk