

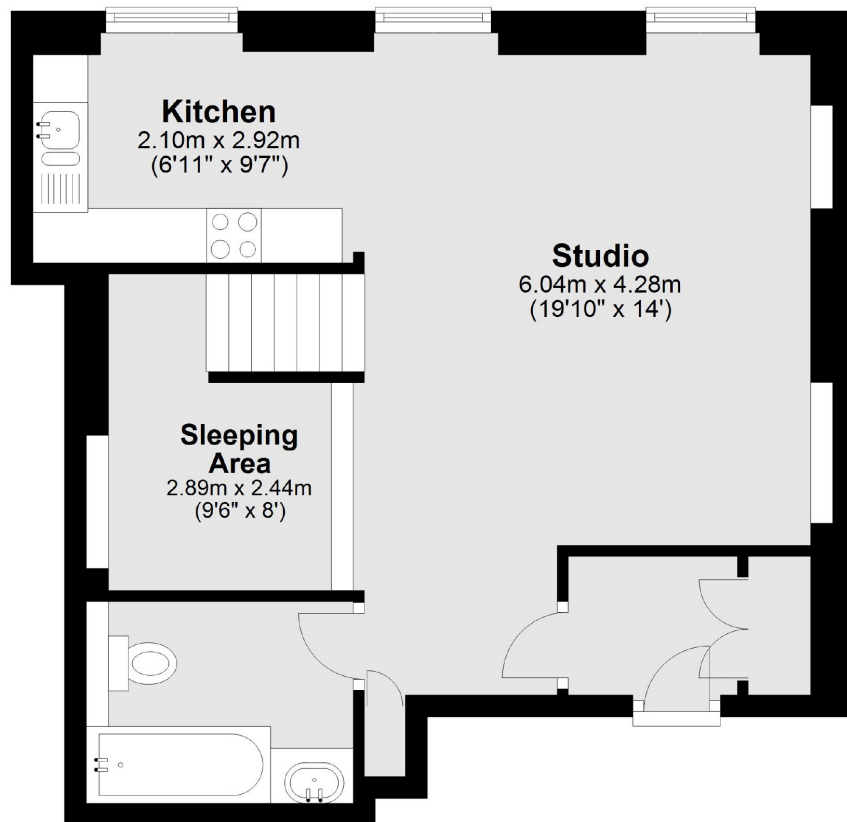


# ALBEMARLE STREET

## MAYFAIR W1S



A STUDIO APARTMENT LOCATED ON THE SECOND FLOOR OF THIS ATTRACTIVE GEORGIAN BUILDING IN A PRESTIGIOUS CENTRAL MAYFAIR LOCATION.



Total area: approx. 44.9 sq. metres (483.8 sq. feet)

We aim to make our particulars both accurate and reliable. However they are not guaranteed; nor do they form part of an offer or contract. If you require clarification on any points then please contact us, especially if you're traveling some distance to view. Please note that appliances and heating systems have not been tested and therefore no warranties can be given as to their working order. Energy Rating: C



A studio apartment located on the second floor of this attractive Georgian building in a prestigious central Mayfair location.

Albemarle Street is ideally located for Green Park tube station on the Piccadilly, Victoria and Jubilee lines. Piccadilly Circus and the amenities and attractions of the West End are close by.

#### FEATURES

- Spacious Studio
- Wooden Flooring
- Modern Fixtures & Fittings
- Lift Access
- Mezzanine Sleeping Area
- Excellent Location

Price: £790 Per week



**WETHERELL**  
MAYFAIR'S FINEST PROPERTIES

102 Mount Street • London • W1K 2TH  
T: 020 7529 5588 E: [rentals@wetherell.co.uk](mailto:rentals@wetherell.co.uk)  
[wetherell.co.uk](http://wetherell.co.uk)

NO ONE KNOWS MAYFAIR BETTER THAN WETHERELL