

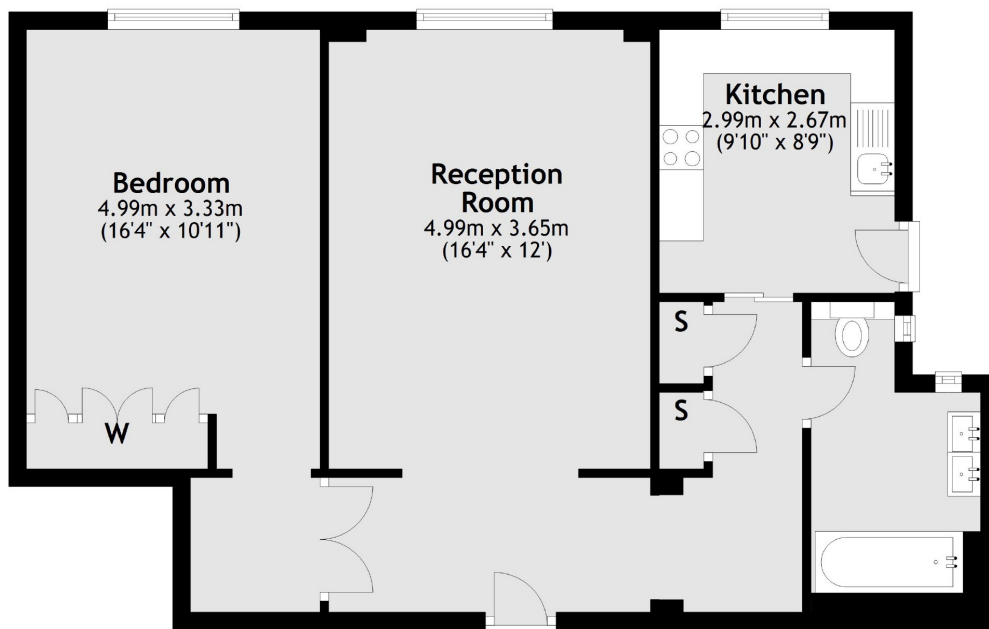


SOUTH AUDLEY STREET

MAYFAIR W1K



THIS RECENTLY RENOVATED ONE BEDROOM APARTMENT IS SITUATED ON THE FIRST FLOOR OF THIS PERIOD BUILDING LOCATED CLOSE TO HYDE PARK.



First Floor

Total area: approx. 64.5 sq. metres (694.4 sq. feet)



FEATURES

- Spacious Double Bedroom
- Lift Access
- 24-Hour Porter
- Luxury Renovation
- Reception Room
- Wood Flooring

Price: £923 Per week



WETHERELL
MAYFAIR'S FINEST PROPERTIES

102 Mount Street • London • W1K 2TH
T: 020 7529 5588 E: rentals@wetherell.co.uk
wetherell.co.uk

We aim to make our particulars both accurate and reliable. However they are not guaranteed; nor do they form part of an offer or contract. If you require clarification on any points then please contact us, especially if you're traveling some distance to view. Please note that appliances and heating systems have not been tested and therefore no warranties can be given as to their working order. Energy Rating: D

NO ONE KNOWS MAYFAIR BETTER THAN WETHERELL