

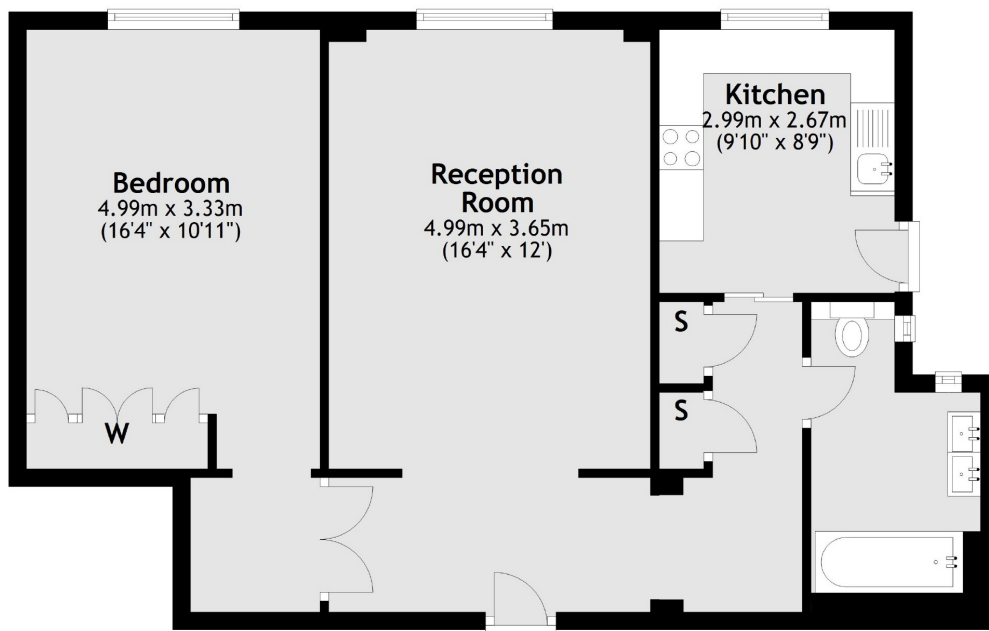


# SOUTH AUDLEY STREET

## MAYFAIR W1K



THIS RECENTLY RENOVATED ONE BEDROOM APARTMENT IS SITUATED ON THE FIRST FLOOR OF THIS PERIOD BUILDING LOCATED CLOSE TO HYDE PARK.



## First Floor

Total area: approx. 64.5 sq. metres (694.4 sq. feet)



This recently renovated one bedroom apartment is situated on the first floor of this period building located close to Hyde Park.

In the heart of Mayfair this property is close to the green spaces of Hyde Park, Green Park and the world famous shops and restaurants of Mayfair.

### FEATURES

- Spacious Double Bedroom
- Lift Access
- 24-Hour Porter
- Luxury Renovation
- Reception Room
- Wood Flooring

Price: £950 Per week



**WETHERELL**  
MAYFAIR'S FINEST PROPERTIES

102 Mount Street • London • W1K 2TH  
T: 020 7529 5588 E: [rentals@wetherell.co.uk](mailto:rentals@wetherell.co.uk)  
[wetherell.co.uk](http://wetherell.co.uk)

We aim to make our particulars both accurate and reliable. However they are not guaranteed; nor do they form part of an offer or contract. If you require clarification on any points then please contact us, especially if you're traveling some distance to view. Please note that appliances and heating systems have not been tested and therefore no warranties can be given as to their working order. Energy Rating: D

NO ONE KNOWS MAYFAIR BETTER THAN WETHERELL