



**WETHERELL**  
MAYFAIR'S FINEST PROPERTIES



## HAYS MEWS, W1J

£3,000 PER WEEK

An exceptional, air-conditioned four bedroomed mews house located just off the highly sought after Berkeley Square.

The property has been refurbished to an impeccably high standard throughout, offering an open plan reception room/dining area with a modern fireplace and kitchen.

Arranged over two floors, the ground floor offers an entrance hall, access to the garage and two double bedrooms, one en suite bathroom with underfloor heating. The staircase to the first floor leads to an elegant open plan double reception room with three south facing windows overlooking Hays Mews. Additionally, there is the principal bedroom suite with cedar wood interior wardrobes, a fourth double bedroom and guest bathroom.

This mews house has been fully furnished by Lucarna to the highest level of specification and attention to detail.

HAYS MEWS IS LOCATED BETWEEN HILL STREET AND CHARLES STREET, CLOSE TO BERKELEY SQUARE AND THE OPEN SPACES OF BOTH HYDE PARK AND GREEN PARK.





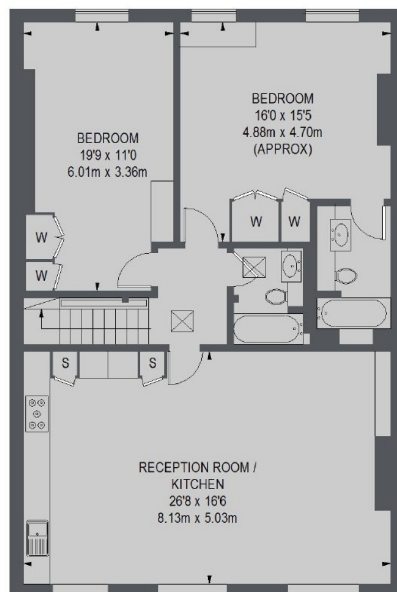
## FEATURES

- Four Double Bedrooms • Recently Refurbished • Three Bathrooms • Garage • Mews House • Excellent Location •

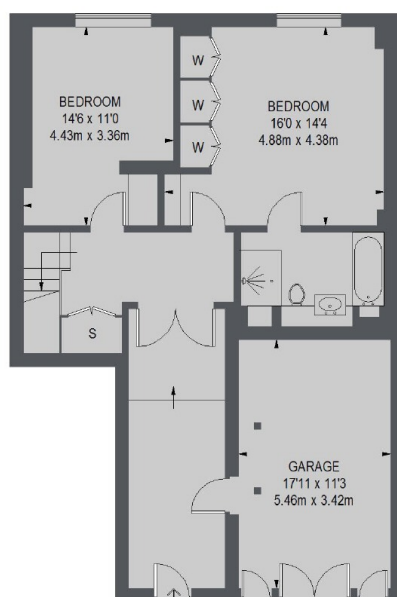




# HAYS MEWS, LONDON, W1J



**FIRST FLOOR**



**GROUND FLOOR**

TOTAL APPROX. FLOOR AREA 1841 SQ. FT. (171.0 SQ. M.)  
GARAGE 211 SQ. FT. (19.64 SQ. M.)