



WETHERELL
MAYFAIR'S FINEST PROPERTIES



BOURDON STREET, W1K

£3,500,000

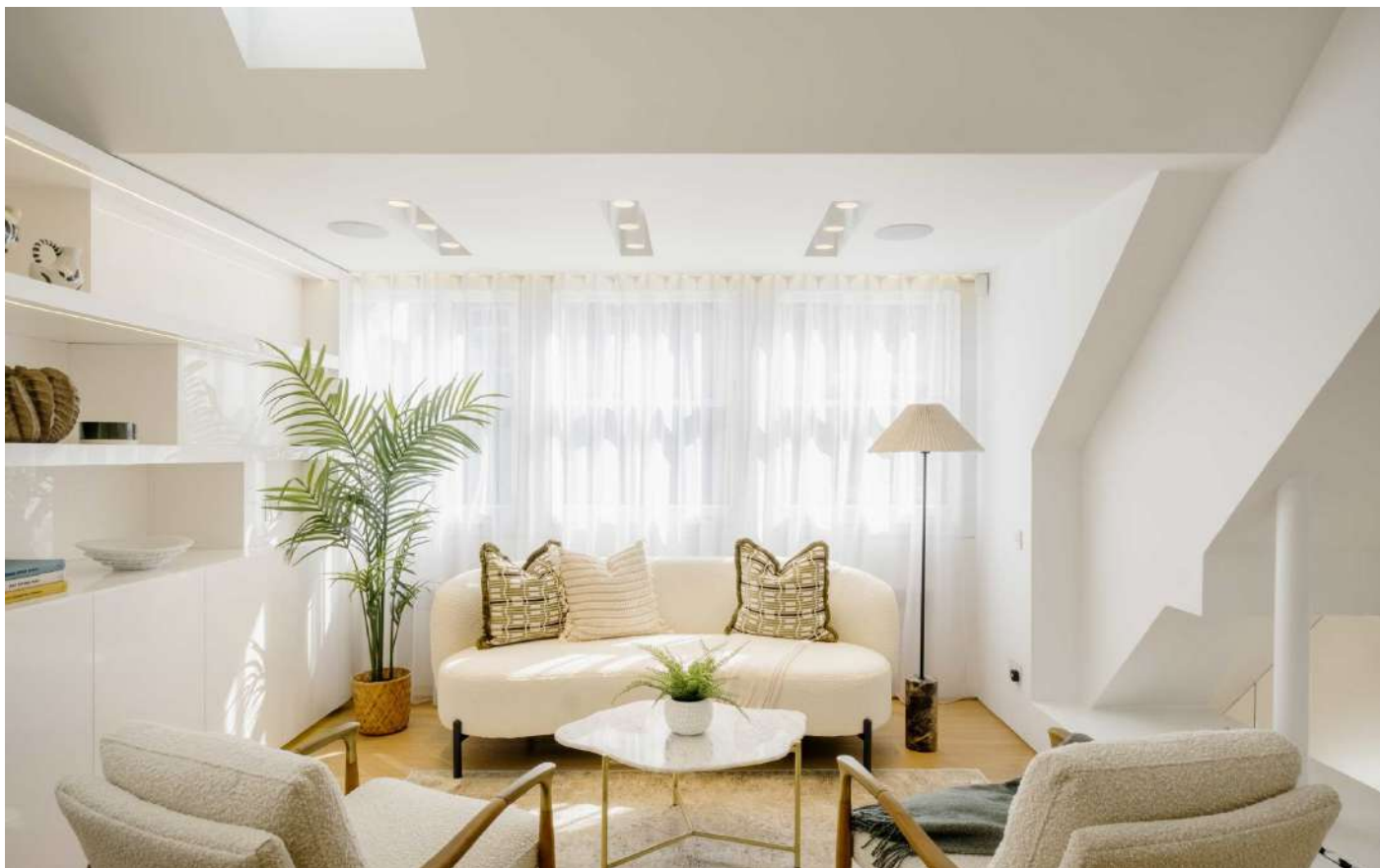
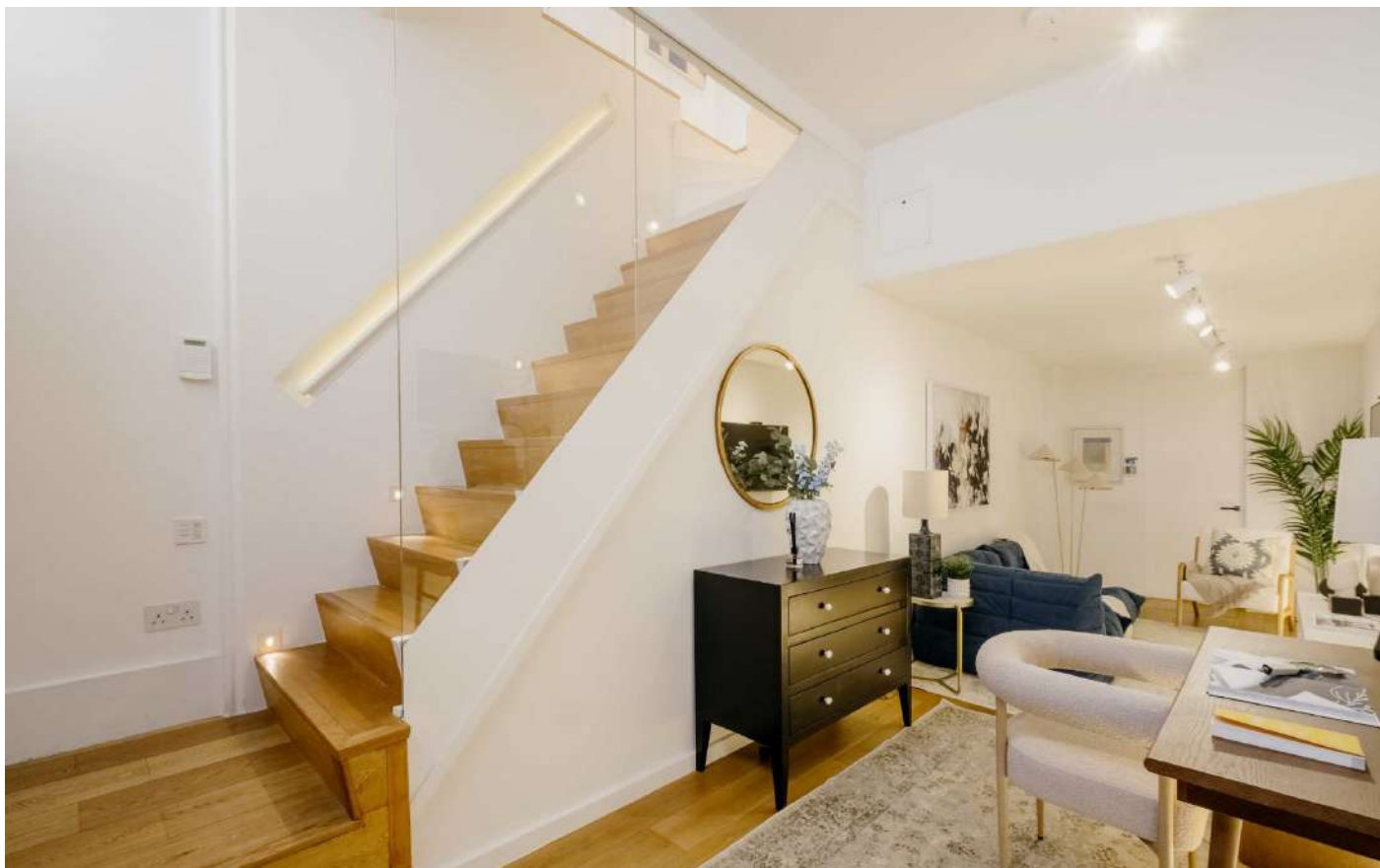
An immaculately presented three-bedroom mews house moments from Berkeley Square.

Set over three floors and measuring 1,552 sq. Ft, this historical home offers superb living and entertainment space with air conditioning in all the bedrooms and the top floor reception room. The ground floor comprises a 26 foot reception room and full height double doors allowing immediate access to Bourdon Street.

On the first floor there's a west facing principal bedroom suite with dressing area and large en suite bathroom. There are two further double bedrooms, both with built in wardrobes and one with en suite shower room, and a separate family shower room. There is also access to a private terrace with mature shrubs and modern panelling.

The second floor showcases exceptional natural light from the dual aspect, stable door and sky lights. This open plan kitchen/reception room is a perfect entertainment space with a Manhattan loft feel from the vaulted ceilings. There is a separate study with bespoke joinery on the half landing.

LOCATED IN THE HEART OF MAYFAIR, THE APARTMENT IS PERFECTLY PLACED TO ENJOY THE BEST THAT THE AREA HAS TO OFFER WHILST BENEFITTING FROM ITS POSITION IN THE GENTEEL MAYFAIR CONSERVATION AREA.

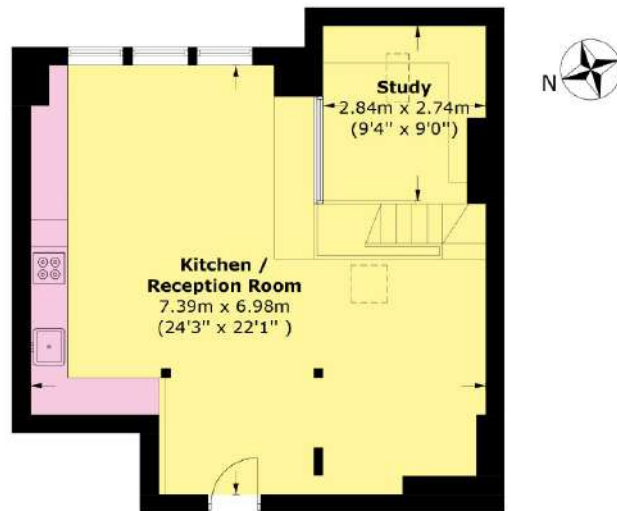


FEATURES

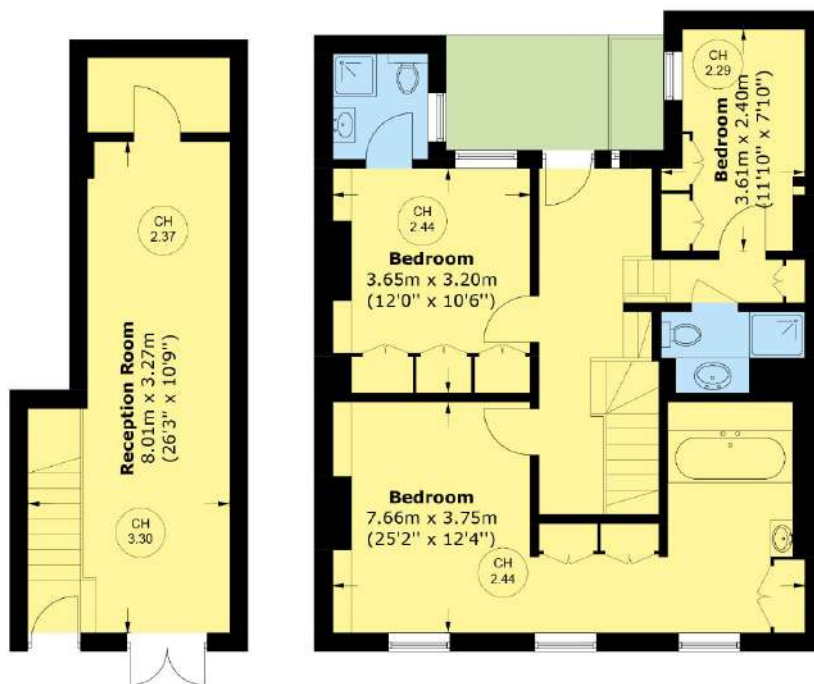
- Immaculately Presented • Three Bedrooms • Three Bathrooms • Private Terrace • Quiet Street • Study • Air Conditioning •



BOURDON STREET, LONDON, W1K



Second Floor



Ground Floor

First Floor

Total area (approx.): 141.4 sq. m (1,522.0 sq. ft)



WETHERELL
MAYFAIR'S FINEST PROPERTIES

102 Mount Street,
London, W1K 2TH
T: 020 7529 5566
E: sales@wetherell.co.uk

We aim to make our particulars both accurate and reliable. However they are not guaranteed; nor do they form part of an offer or contract. If you require clarification on any points then please contact us, especially if you're traveling some distance to view. Please note that appliances and heating systems have not been tested and therefore no warranties can be given as to their working order.

wetherell.co.uk