



**WETHERELL**  
MAYFAIR'S FINEST PROPERTIES



## BOURDON STREET, W1K

£1,500 PER WEEK

A well-presented two-bedroom apartment with far reaching views across Mayfair and 24-hour concierge.

This lateral apartment is situated on the third floor of a purpose-built block moments from Berkeley Square. The spacious and open-plan reception/kitchen/dining room features two large windows providing a wealth of natural light. The principal bedroom suite has a dressing room and smart en suite with walk in shower. There is a further double bedroom with built in wardrobes and a separate bathroom. Grosvenor Hill Court is a head turning mid century apartment building situated directly above the Gagosian gallery offering prime central living with large communal roof terrace, lift access and 24 hour porter.

World-class amenities such as fine restaurants and boutiques shops can be found a short distance away on Mount Street alongside the green open spaces of Mount Street Gardens and Grosvenor Square. Bond Street tube station and Oxford Street tube station are also nearby.

LOCATED IN THE HEART OF MAYFAIR, THE APARTMENT IS PERFECTLY PLACED TO ENJOY THE BEST THAT THE AREA HAS TO OFFER WHILST BENEFITTING FROM ITS POSITION IN THE GENTEEL MAYFAIR CONSERVATION AREA.



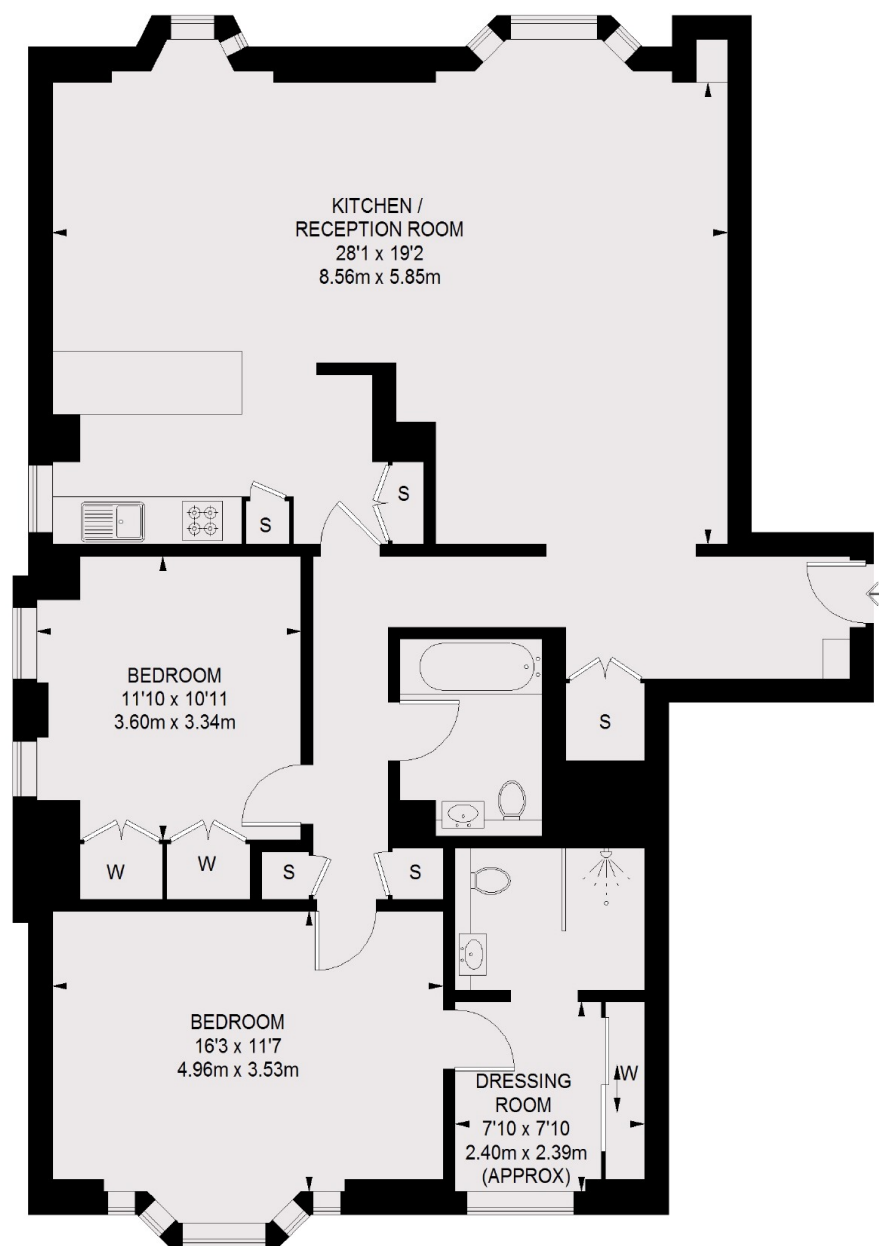
## FEATURES

- Prime Mayfair Location • Two Bedrooms • Two Bathrooms • Large Communal Terrace • Lift • 24-Hour Porter •





# BOURDON STREET, LONDON, W1K



THIRD FLOOR

TOTAL APPROX. FLOOR AREA 1287 SQ. FT. (119.52 SQ. M.)



**WETHERELL**  
MAYFAIR'S FINEST PROPERTIES

102 Mount Street,  
London, W1K 2TH

T: 020 7529 5566

E: [sales@wetherell.co.uk](mailto:sales@wetherell.co.uk)

We aim to make our particulars both accurate and reliable. However they are not guaranteed; nor do they form part of an offer or contract. If you require clarification on any points then please contact us, especially if you're traveling some distance to view. Please note that appliances and heating systems have not been tested and therefore no warranties can be given as to their working order.

[wetherell.co.uk](http://wetherell.co.uk)