



— 2 —

# CHESTERFIELD HILL

MAYFAIR, W1J





An exceptional six bedroom new build townhouse set behind a restored, original facade. Meticulously refurbished, the property features the finest hand crafted materials, lighting and bespoke joinery.





With its grand entrance hall, this property creates a lasting first impression. Leading smoothly onto the elegant open plan kitchen/dining room with its own private patio, the ground floor provides the perfect setting for entertaining.

Spread over seven floors, the accommodation has four bedroom suites and an additional top floor bedroom/study, reception room, office, games room, cinema room, staff quarters, lift, terrace and patio.

Located in the heart of the Mayfair Village and close to the picturesque Mount Street Gardens, the property is well placed for enjoying the best Mayfair has to offer in fine dining, shopping and art.











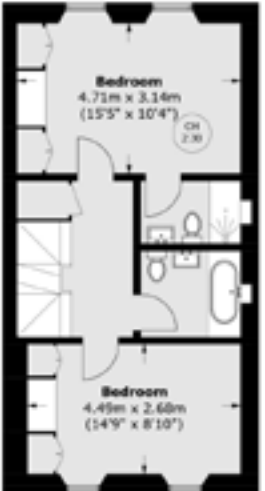
# GAMES & CINEMA ROOM

---

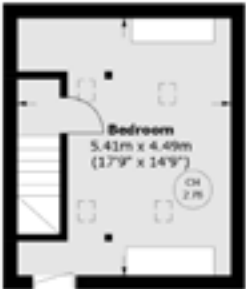




Third Floor



Fourth Floor



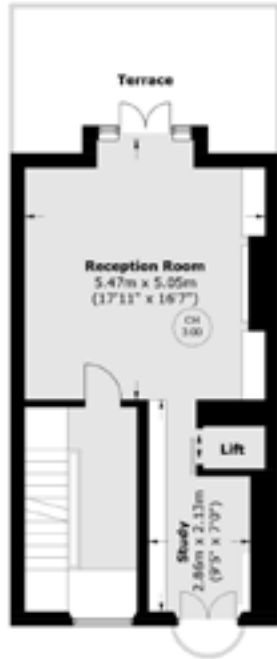
Fifth Floor



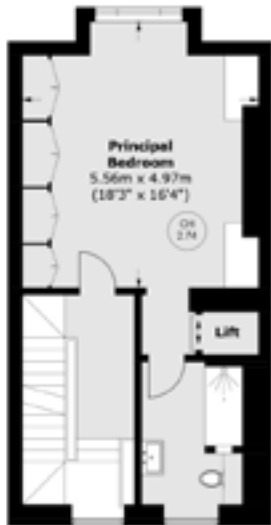
Lower Ground Floor



Ground Floor



First Floor



Second Floor

TOTAL AREA (APPOX): 3,805.0 SQ. FT (353.5 SQ. M)  
TERRACE: 291.7 SQ. FT (27.1 SQ. M)

TOWNHOUSE | SIX BEDROOMS | OPEN PLAN KITCHEN/DINING  
CINEMA ROOM | LIFT | TERRACE

**Price:** £8,450 per week



**WETHERELL**  
MAYFAIR'S FINEST PROPERTIES

102 Mount Street, London, W1K 2TH  
020 7529 5566 • [wetherell.co.uk](http://wetherell.co.uk)

Wetherell have no authority to make or give any representations or warranties in relation to the property. These particulars do not form part of any offer or contract and must not be relied upon as statements or representations of fact. Any areas, measurements or distances are approximate. The text, photographs and plans are for guidance only and are not necessarily comprehensive. It should not be assumed that the property has all the necessary planning, building regulation or other consents and Wetherell have not tested any services, equipment or facilities. Purchasers must satisfy themselves by inspection or otherwise. April 2025.