

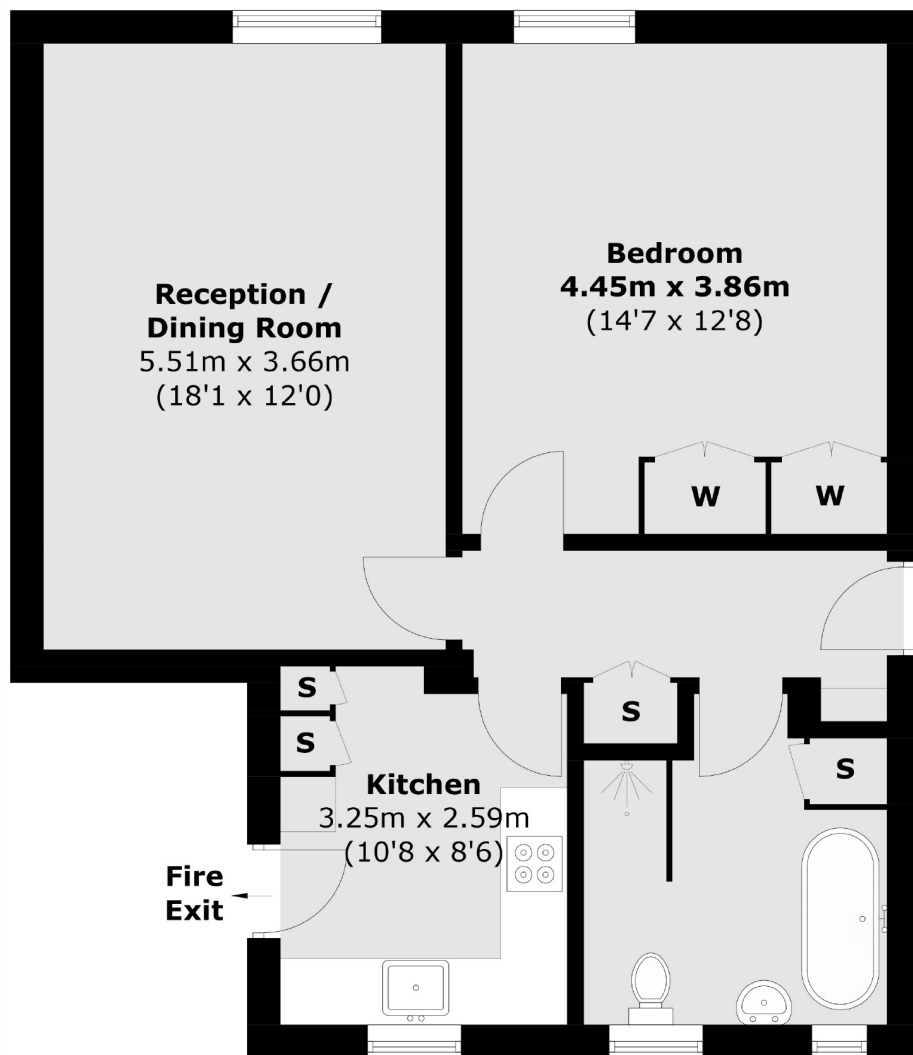


# CHESTERFIELD GARDENS

## MAYFAIR W1J



A RECENTLY REFURBISHED ONE BEDROOM APARTMENT ON THE FIRST FLOOR OF A 24-HOUR PORTERED BUILDING WITH A LIFT IN THE HEART OF MAYFAIR.



## First Floor

Total area (approx.): 62.0 sq. m (667.0 sq. ft)

We aim to make our particulars both accurate and reliable. However they are not guaranteed; nor do they form part of an offer or contract. If you require clarification on any points then please contact us, especially if you're traveling some distance to view. Please note that appliances and heating systems have not been tested and therefore no warranties can be given as to their working order. Energy Rating: C



A recently refurbished one bedroom apartment on the first floor of a 24-hour portered building with a lift in the heart of Mayfair.

In the heart of Mayfair this property is close to the green spaces of Hyde Park, Green Park and the world famous shops and restaurants of Mayfair.

### FEATURES

- Spacious Double Bedroom
- Lift Access
- 24-Hour Porter
- Luxury Renovation
- Reception Room
- Wood Flooring

Price: £850 Per week



**WETHERELL**  
MAYFAIR'S FINEST PROPERTIES

102 Mount Street • London • W1K 2TH  
T: 020 7529 5588 E: [rentals@wetherell.co.uk](mailto:rentals@wetherell.co.uk)  
[wetherell.co.uk](http://wetherell.co.uk)

NO ONE KNOWS MAYFAIR BETTER THAN WETHERELL