



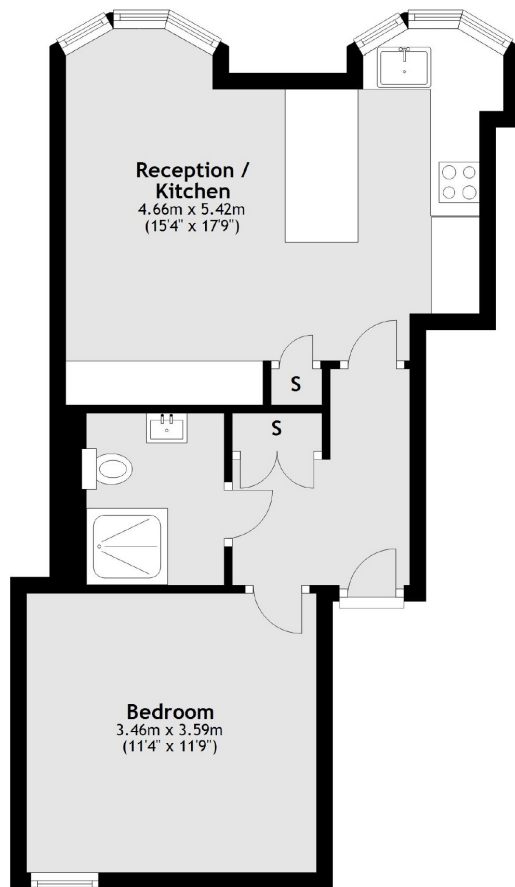
BERKELEY STREET

MAYFAIR W1J



A BRAND NEWLY RENOVATED ONE DOUBLE BEDROOM APARTMENT
AVAILABLE TO LET IN A PORTERED PERIOD MANSION BLOCK IN THE HEART
OF MAYFAIR.

First Floor



Total area: approx. 43.7 sq. metres (470.1 sq. feet)



The property features a contemporary and fully integrated open plan kitchen/living room with wood flooring, a large double bedroom and luxury shower room.

The property is just moments from the shops and restaurants that Mayfair and Piccadilly have to offer and just a short walk to Green Park underground station.

FEATURES

- Brand New Renovation
- Spacious Double Bedroom
- Porter
- Wooden Flooring
- Modern Kitchen and Bathroom
- Excellent Location

Price: £690 Per week



WETHERELL
MAYFAIR'S FINEST PROPERTIES

102 Mount Street • London • W1K 2TH
T: 020 7529 5588 E: rentals@wetherell.co.uk
wetherell.co.uk

We aim to make our particulars both accurate and reliable. However they are not guaranteed; nor do they form part of an offer or contract. If you require clarification on any points then please contact us, especially if you're traveling some distance to view. Please note that appliances and heating systems have not been tested and therefore no warranties can be given as to their working order. Energy Rating: C

NO ONE KNOWS MAYFAIR BETTER THAN WETHERELL