



WETHERELL

MAYFAIR'S FINEST PROPERTIES



NORTH ROW, W1K

£3,295 PER WEEK

This stunning newly refurbished two bedroom, two bathroom apartment is set over the fifth to seventh floors and benefits from a 24 hour concierge and three private terraces that boast views over the London skyline and Hyde Park.

The apartment has been meticulously renovated and interior designed throughout with contemporary fixtures, fittings and furnishings.

Further benefitting from solid wood flooring, air conditioning and at an additional cost, access to the facilities of the London Marriott Hotel including use of the gym, swimming pool, underground parking and room service.

PARK LANE PLACE OFFERS LUXURY ACCOMMODATION IN THE HEART OF MAYFAIR MOMENTS FROM THE EXCLUSIVE BOUTIQUES, SHOPS, RESTAURANTS AND BARS OF PICCADILLY, OXFORD STREET AND BOND STREET. HYDE PARK IS JUST OVER THE ROAD.

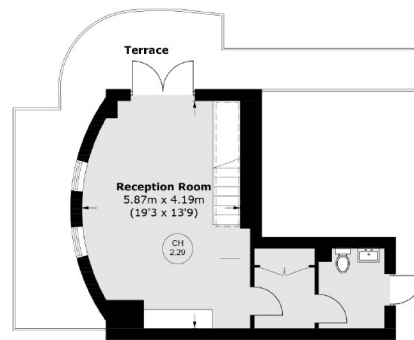


FEATURES

- Two Large Double Bedrooms • Two Luxury Bathrooms • Three Terraces • Contemporary Furniture • Air Conditioning • Penthouse Apartment •



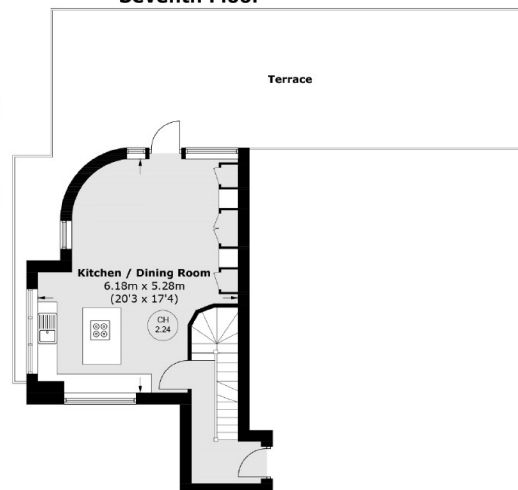
NORTH ROW, LONDON, W1K



Seventh Floor



Fifth Floor



Sixth Floor

Total area (approx.): 134.6 sq. m (1,448.9 sq. ft)
Terrace : 101.4 sq. m (1,091.4 sq. ft)



WETHERELL
MAYFAIR'S FINEST PROPERTIES

102 Mount Street,
London, W1K 2TH
T: 020 7529 5566
E: sales@wetherell.co.uk

We aim to make our particulars both accurate and reliable. However they are not guaranteed; nor do they form part of an offer or contract. If you require clarification on any points then please contact us, especially if you're traveling some distance to view. Please note that appliances and heating systems have not been tested and therefore no warranties can be given as to their working order.

wetherell.co.uk