

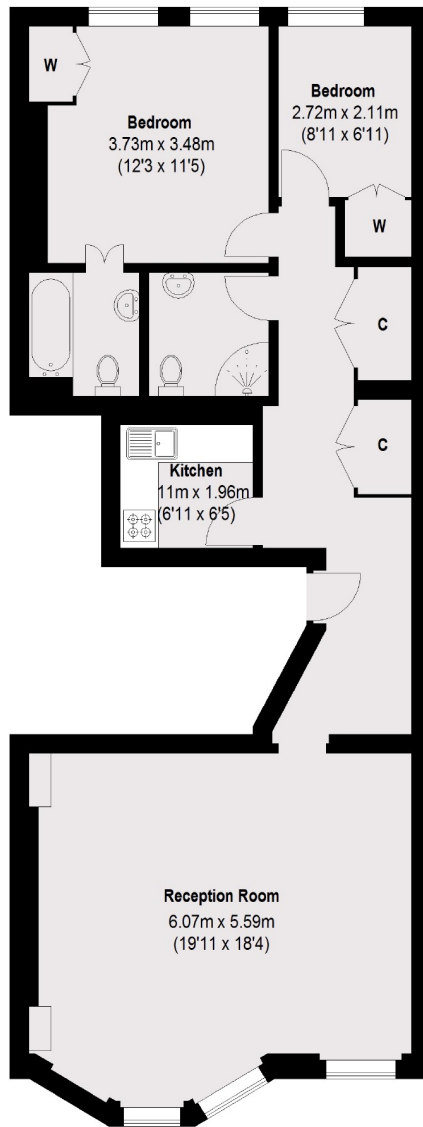


# PARK STREET

## MAYFAIR W1K



A TWO BEDROOM PERIOD PROPERTY IN CENTRAL MAYFAIR WITH A LARGE RECEPTION ROOM, A DOUBLE BEDROOM WITH AN EN SUITE AND SINGLE BEDROOM.



### Second Floor

Total area (approx.): 83.61 sq. m (900 sq. ft)

We aim to make our particulars both accurate and reliable. However they are not guaranteed; nor do they form part of an offer or contract. If you require clarification on any points then please contact us, especially if you're traveling some distance to view. Please note that appliances and heating systems have not been tested and therefore no warranties can be given as to their working order. Energy Rating: C



This bright apartment comprises of a large reception/dining room with a feature fireplace and wooden floors, a modern kitchen, a large double bedroom with an en-suite bathroom, a single bedroom/study and a further modern shower room. This property benefits from an abundance of storage.

The apartment is conveniently located close to Oxford Street, Hyde Park, Marble Arch and Bond Street tube stations.

### FEATURES

- Spacious Double Bedroom
- Single Bedroom/Study
- Modern Separate Kitchen
- Reception/Dining Room
- Two Bathrooms
- High Ceilings

Price: £1,150 Per week



**WETHERELL**  
MAYFAIR'S FINEST PROPERTIES

102 Mount Street • London • W1K 2TH  
T: 020 7529 5588 E: [rentals@wetherell.co.uk](mailto:rentals@wetherell.co.uk)  
[wetherell.co.uk](http://wetherell.co.uk)

NO ONE KNOWS MAYFAIR BETTER THAN WETHERELL