



WETHERELL
MAYFAIR'S FINEST PROPERTIES



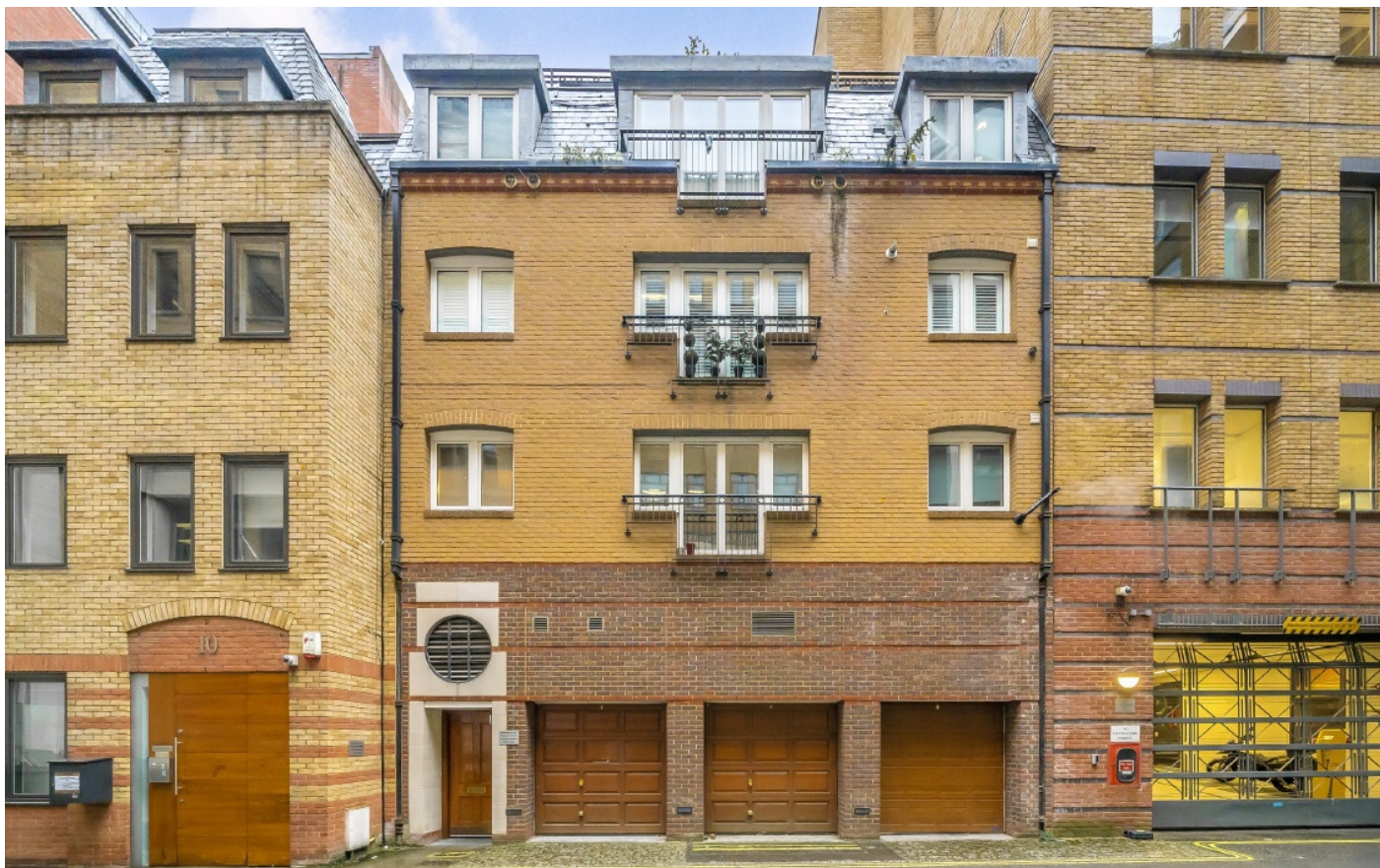
ROSE & CROWN YARD, SW1Y

£850,000

A one-bedroom apartment in the heart of St. James's.

This one-bedroom apartment is located on the first floor of this modern purpose-built block with a lift, in the centre of historic St James's. Measuring 522 square feet plus a large storage room of 117 square feet, there is plenty of space in the apartment for, a spacious reception room including space for a dining table, a separate kitchen and a good-sized double bedroom with plenty of wardrobe space. The property is well presented throughout and conveniently located just off King Street.

ROSE AND CROWN YARD IS A QUIET MEWS PERFECTLY LOCATED MOMENTS FROM ST JAMES'S SQUARE, ST JAMES'S PARK, GREEN PARK AND THE SEEMINGLY ENDLESS BOUTIQUES, SHOPS, RESTAURANTS AND BARS OF JERMYN STREET, PICCADILLY & MAYFAIR.

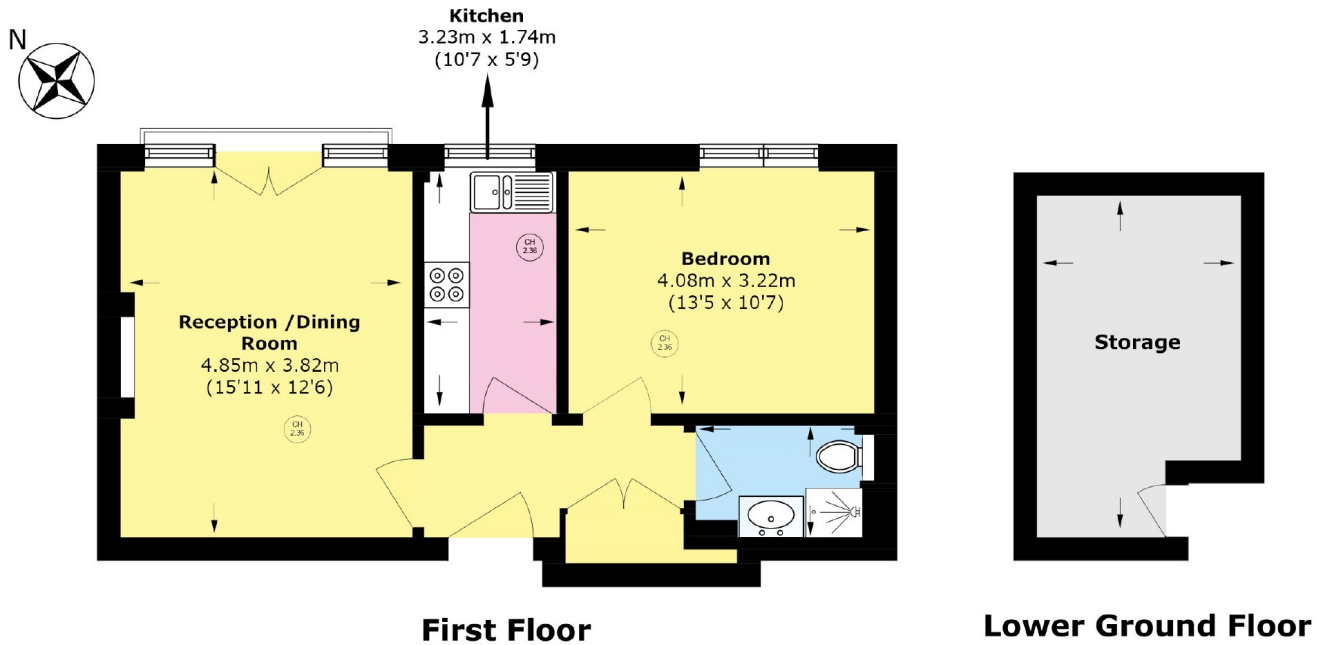


FEATURES

- One Bedroom • One Bathroom • Juliet Balcony • Separate Store Room • Long Lease •



ROSE & CROWN YARD, LONDON, SW1Y



Total area (approx.): 48.5 sq. m (522.0 sq. ft)
Storage area (approx.): 10.9 sq. m (117.3 sq. ft)