

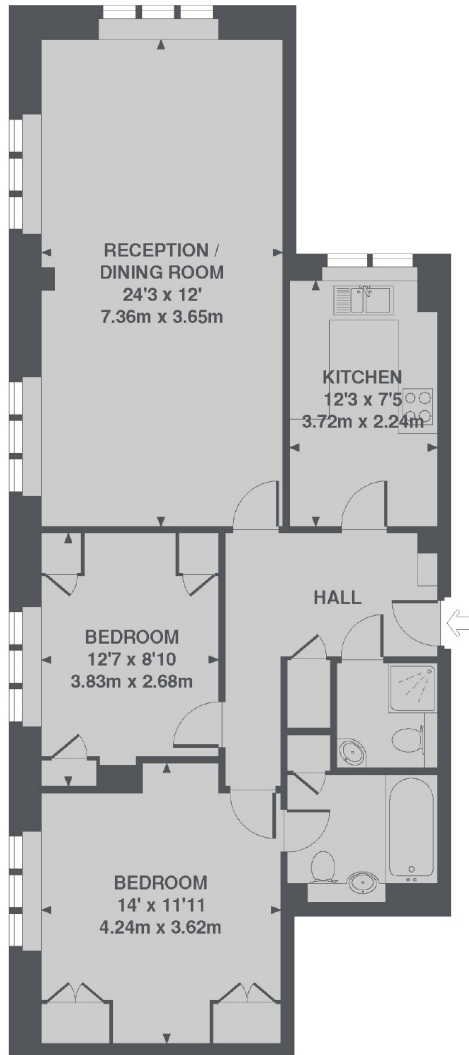


HERTFORD STREET

MAYFAIR W1J



A TWO BEDROOM APARTMENT ON THE FIFTH FLOOR OF THIS POPULAR ART-DECO BUILDING WITH PORTER AND LIFT.



5TH FLOOR

TOTAL APPROX. FLOOR AREA 833 SQ. FT. (77.4 SQ. M.)

We aim to make our particulars both accurate and reliable. However they are not guaranteed; nor do they form part of an offer or contract. If you require clarification on any points then please contact us, especially if you're traveling some distance to view. Please note that appliances and heating systems have not been tested and therefore no warranties can be given as to their working order. Energy Rating: C



A two bedroom apartment on the fifth floor of this popular art-deco building with porter and lift. With two similar sized double bedrooms, this apartment is suitable for a couple looking for a spare bedroom or two sharing professionals.

Within the vibrant area of Shepherd's Market this building is to the east side of Hertford Street.

FEATURES

- Two Double Bedrooms
- Two Bathrooms
- Separate Kitchen
- Lift Access
- Porter
- Excellent Location

Price: £925 Per week



WETHERELL
MAYFAIR'S FINEST PROPERTIES

102 Mount Street • London • W1K 2TH
T: 020 7529 5588 E: rentals@wetherell.co.uk
wetherell.co.uk

NO ONE KNOWS MAYFAIR BETTER THAN WETHERELL