

EATON PLACE SW1

BELGRAVIA

elegance



EATON PLACE SW1



A SPACIOUS THREE-BEDROOM TRIPLE ASPECT 3RD & 4TH FLOOR MAISONNETTE OF 1,980 SQ FT WITH LIFT AND ROOF TERRACE



With windows on three sides the maisonnette offers a true sense of living in the heart of Belgravia.

Both the reception room and the separate dining room, which comfortably seats 12, have dual aspects overlooking the neighbouring traditional Thomas Cubitt designed Belgravia town houses, with views looking up and down Upper Belgrave Street, towards Belgrave Square, and Eaton Square, respectively.



The principal bedroom is located on the upper floor with air conditioning, a separate dressing room and ensuite bathroom. There are two further double bedrooms and a bathroom on the top floor, as well as a South East facing roof terrace. In addition, there is a separate storage cupboard and a separate locker room on the communal half landings.

Eaton Place was originally designed by the famous architect Thomas Cubitt in c.1850 at around the same time he built the front elevation of Buckingham Palace. It epitomises Belgravia, lined with white stucco townhouses, running parallel to Eaton Square and is well located to Hyde Park and Knightsbridge.

Within the immediate proximity are the retail locations of Elizabeth Street, Sloane Square and the Kings Road where you will find, many of the world-renowned shops, boutiques, and restaurants.

HISTORICAL NOTE

A former occupant was Mary Soames, the youngest daughter of Sir Winston Churchill, who moved into the apartment between 1966-1969 shortly after Sir Winston's funeral and before accompanying her husband Christopher Soames as British Ambassador in Paris.

Mary Spencer Churchill was born in London. She joined the Auxiliary Territorial Service in 1941 with which she served in London.

In 1945, she was appointed a Member of the Order of the British Empire (MBE), in recognition of meritorious military services.

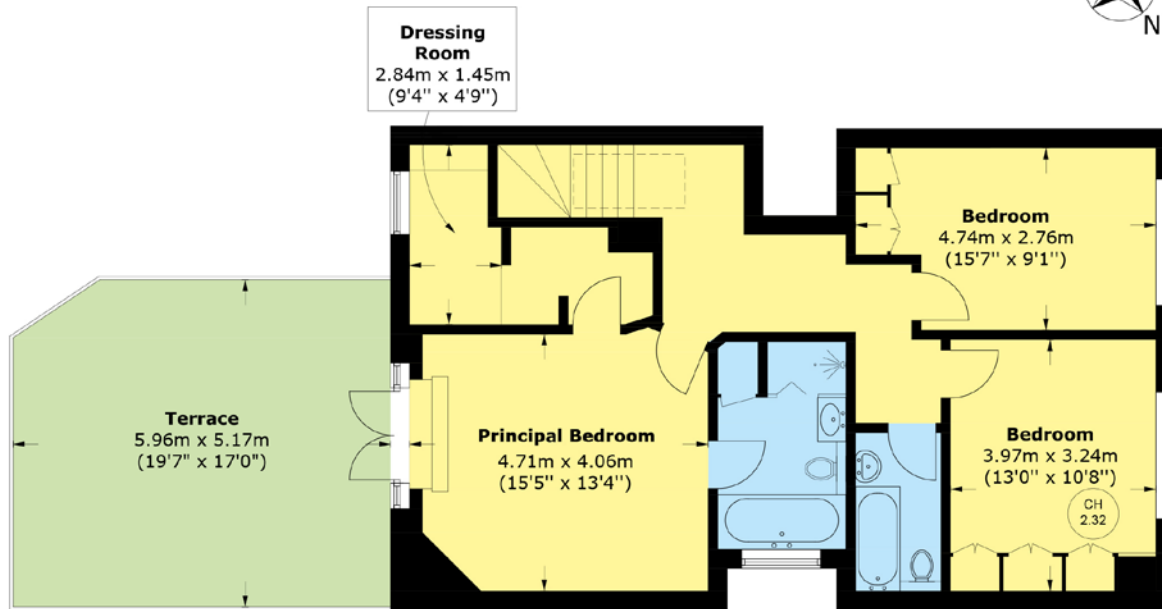
After marrying her husband, Christopher Soames, Lady Soames was promoted to Dame Commander of the Order of the British Empire (DBE) for her public service.

*Photograph of Mary Soames (1922-2014).
© World History Archive / Alamy Stock Photo*

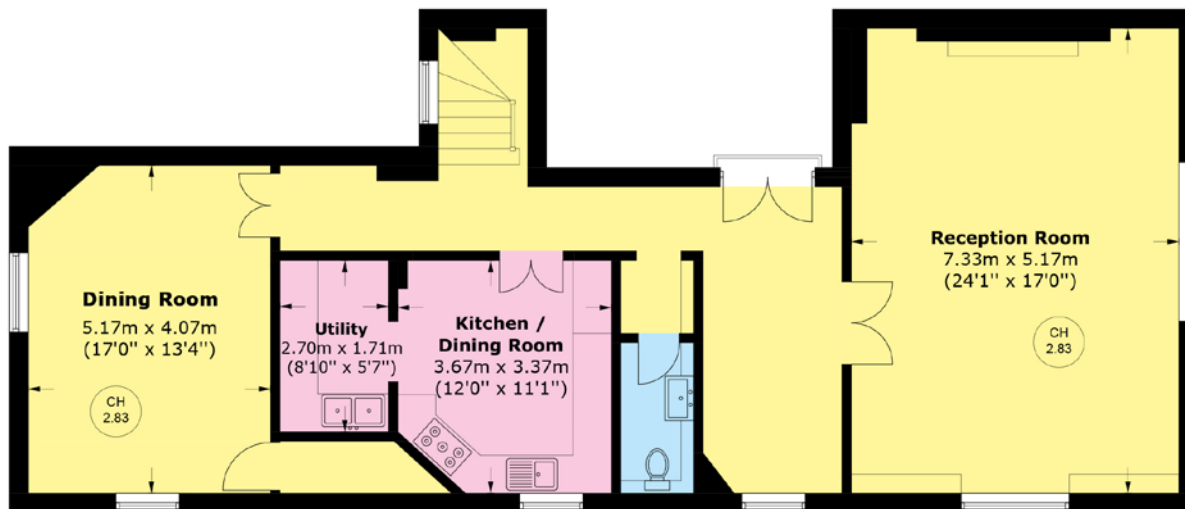


TOTAL AREA (APPROX.): 183.9 SQ. M (1980 SQ. FT)

TERRACE: 30.2 SQ. M (325.1 SQ. FT)



FOURTH FLOOR



THIRD FLOOR



SHARE OF FREEHOLD

SERVICE CHARGE: £13,392 PER ANNUM

PRICE £4,300,000

SOLE SELLING AGENT



WETHERELL
BELGRAVIA'S FINEST PROPERTIES

102 Mount Street, London W1K 2TH

Tel: 020 7529 5566

sales@wetherell.co.uk

wetherell.co.uk

Wetherell have no authority to make or give any representations or warranties in relation to the property. These particulars do not form part of any offer or contract and must not be relied upon as statements or representations of fact. Any areas, measurements or distances are approximate. The text, photographs and plans are for guidance only and are not necessarily comprehensive. It should not be assumed that the property has all the necessary planning, building regulation or other consents and Wetherell have not tested any services, equipment or facilities. Purchasers must satisfy themselves by inspection or otherwise. February 2025.