



**WETHERELL**  
MAYFAIR'S FINEST PROPERTIES



## BALFOUR PLACE, W1K

£1,250 PER WEEK

An immaculately presented two-bedroom, two-bathroom apartment in the heart of Mayfair village.

Situated on the fifth floor of this attractive red brick building, and measuring 1001 sq. ft, this apartment offers superior living just moments from Mayfair's finest amenities.

There is a 25ft wide, west facing reception room with feature fireplace, ornate corning and three large windows, and a separate adjacent kitchen with integrated Miele appliances.

Both bedrooms are quietly positioned at the rear of the property with the large principal bedroom enjoying an east facing vista, built in wardrobes and an en suite bathroom. The second bedroom also has built in wardrobes and benefits from a separate shower room accessed from the hallway.

---

BALFOUR PLACE IS PERFECTLY LOCATED FOR THE VARIOUS BOUTIQUES, RESTAURANTS, AND HOTELS OF CENTRAL MAYFAIR. IT RUNS BETWEEN MOUNT STREET AND ALDFORD STREET AND IS A SHORT DISTANCE FROM BOND STREET TUBE.





## FEATURES

- Two Double Bedrooms • Two Bathrooms • Lateral • Fifth Floor • Lift • Resident Caretaker •



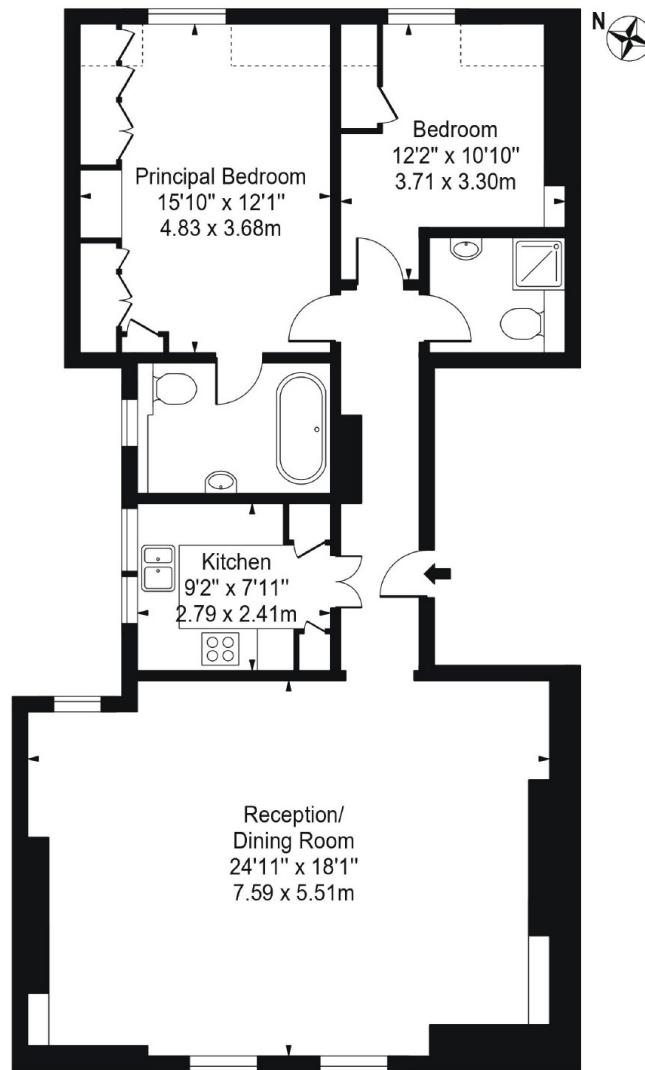


# BALFOUR PLACE, LONDON, W1K

## Balfour Place

Approx. Total Internal Area 1001 Sq Ft - 93.00 Sq M  
(Including Restricted Height Area)

Approx. Gross Internal Area 973 Sq Ft - 90.39 Sq M  
(Excluding Restricted Height Area)



Fifth Floor

For Illustration Purposes Only - Not To Scale

This floor plan should be used as a general outline for guidance only and does not constitute in whole or in part an offer or contract. Any intending purchaser or lessee should satisfy themselves by inspection, searches, enquiries and full survey as to the correctness of each statement. Any areas, measurements or distances quoted are approximate and should not be used to value a property or be the basis of any sale or let.

Copyright Morriarti Photography & Design LTD



**WETHERELL**  
MAYFAIR'S FINEST PROPERTIES

102 Mount Street,  
London, W1K 2TH  
T: 020 7529 5566  
E: sales@wetherell.co.uk

We aim to make our particulars both accurate and reliable. However they are not guaranteed; nor do they form part of an offer or contract. If you require clarification on any points then please contact us, especially if you're traveling some distance to view. Please note that appliances and heating systems have not been tested and therefore no warranties can be given as to their working order.

wetherell.co.uk