



**WETHERELL**  
MAYFAIR'S FINEST PROPERTIES



## GREEN STREET, W1K

£4,250 PER WEEK

A three-bedroom, three bathroom apartment set over the top two floors with private roof terrace overlooking Green Street's Secret Garden's.

The fourth floor comprises of a spacious open plan kitchen/dining room, with all bedrooms having en-suite bathrooms and built in wardrobes. The principle bedroom benefits from a walk through dressing room.

The reception is located on the fifth floor and leads out to the impressive private roof terrace. The apartment also benefits from direct lift access and air conditioning.

GREEN STREET IS SITUATED BETWEEN NORTH AUDLEY STREET AND PARK LANE. IT IS WELL PLACED FOR ACCESS TO THE INTERNATIONALLY RENOWNED SHOPS, RESTAURANTS AND OTHER AMENITIES OF MAYFAIR AND THE WEST END.





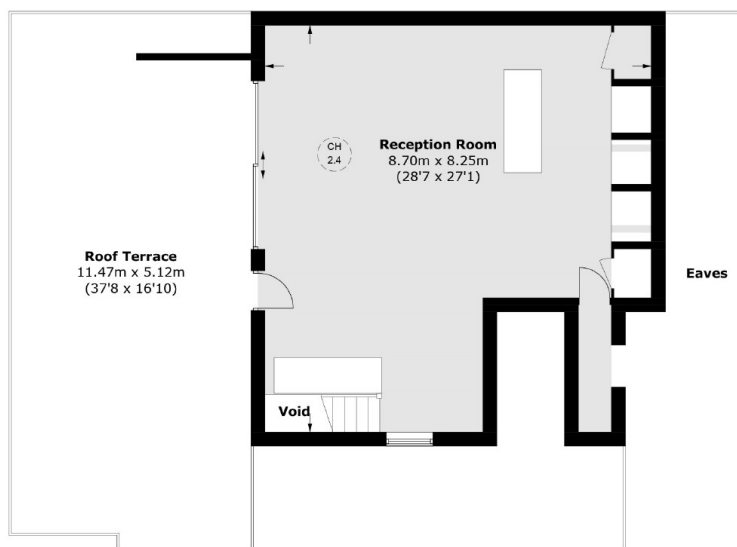
## FEATURES

- Three Bedrooms • Three Bathrooms • Private Roof Terrace • Access to Private Gardens • Concierge • Prime Mayfair Address •





# GREEN STREET, LONDON, W1K



**Fifth Floor**



**Fourth Floor**

Total area (approx.): 256.4 sq. m (2,759.9 sq. ft)

Roof Terrace : 57.9 sq. m (623.2 sq. ft)

(Excluding Eaves / Lift)



**WETHERELL**  
MAYFAIR'S FINEST PROPERTIES

102 Mount Street,  
London, W1K 2TH

T: 020 7529 5566

E: [sales@wetherell.co.uk](mailto:sales@wetherell.co.uk)

We aim to make our particulars both accurate and reliable. However they are not guaranteed; nor do they form part of an offer or contract. If you require clarification on any points then please contact us, especially if you're traveling some distance to view. Please note that appliances and heating systems have not been tested and therefore no warranties can be given as to their working order.

[wetherell.co.uk](http://wetherell.co.uk)