



WETHERELL
MAYFAIR'S FINEST PROPERTIES



BERKELEY SQUARE, W1J

£1,500 PER WEEK

A well presented two bedroom apartment, situated in the only residential building on Berkeley Square with portage.

Situated on the second floor, the accommodation provides two bedrooms both benefiting en suite bathrooms, an entrance hallway with a large open plan reception/dining room that overlook the the communal courtyard.

BERKELEY SQUARE IS IDEALLY LOCATED IN THE HEART OF MAYFAIR, NEARBY WORLD CLASS SHOPS, BARS AND RESTAURANTS THAT MAYFAIR HAS TO OFFER AND IS A VERY SHORT WALK AWAY FORM GREEN PARK STATION AND THE OPEN GREEN SPACE.

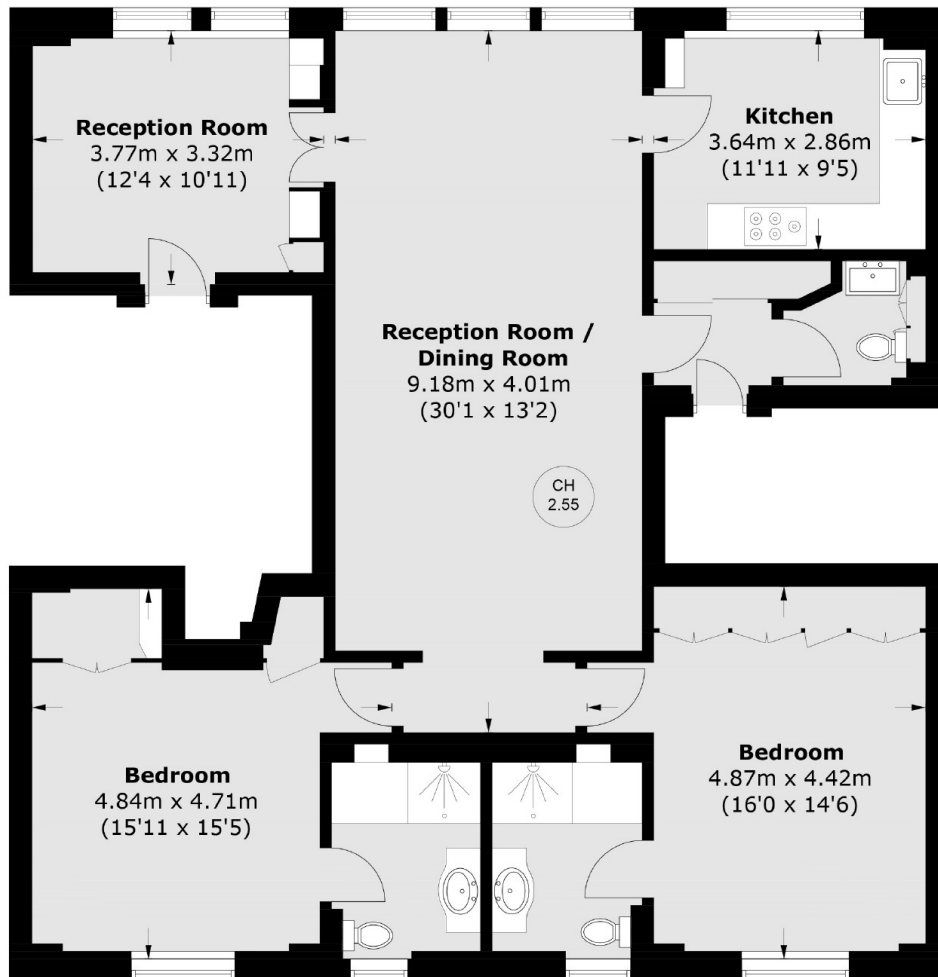


FEATURES

- Two Double Bedrooms • Two En Suite Bathrooms • Double Reception Room • Fully Fitted Kitchen • Wooden Floors • Porter •



BERKELEY SQUARE, LONDON, W1J



Second Floor

Total area (approx.): 114.4 sq. m (1,231.4 sq. ft)



WETHERELL
MAYFAIR'S FINEST PROPERTIES

102 Mount Street,
London, W1K 2TH
T: 020 7529 5566
E: sales@wetherell.co.uk

We aim to make our particulars both accurate and reliable. However they are not guaranteed; nor do they form part of an offer or contract. If you require clarification on any points then please contact us, especially if you're traveling some distance to view. Please note that appliances and heating systems have not been tested and therefore no warranties can be given as to their working order.

wetherell.co.uk