

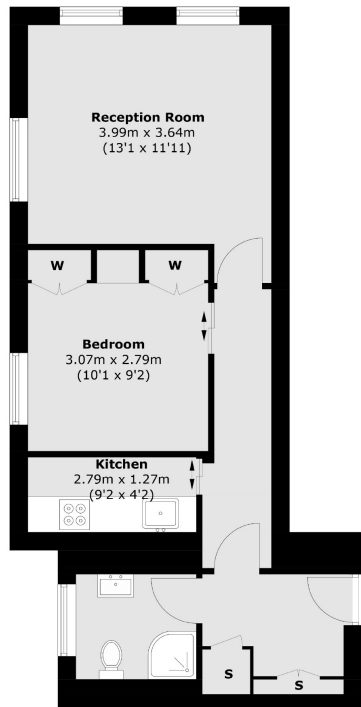


JERMYN STREET

ST JAMES'S SW1Y



THIS ONE BEDROOM APARTMENT IS PRESENTED IN IMMACULATE CONDITION AND HAS A LARGE RECEPTION ROOM WITH DUAL ASPECT WINDOWS,



Third Floor

Total area (approx.): 38.9 sq. m (418.8 sq. ft)

This one bedroom apartment is presented in immaculate condition and has a large reception room with dual aspect windows,

Bank Chambers is ideally located for the boutiques of New Bond Street and the green open spaces of Green Park and St James' Park. Transport links include Piccadilly Circus tube station and Green Park station.

FEATURES

- Wood Flooring
- Built-In Storage
- Secure Portered Building
- Large Reception Room
- Spacious Double Bedroom
- Lift

Price: £725 Per week

We aim to make our particulars both accurate and reliable. However they are not guaranteed; nor do they form part of an offer or contract. If you require clarification on any points then please contact us, especially if you're traveling some distance to view. Please note that appliances and heating systems have not been tested and therefore no warranties can be given as to their working order. Energy Rating: E



WETHERELL
MAYFAIR'S FINEST PROPERTIES

102 Mount Street • London • W1K 2TH
T: 020 7529 5588 E: rentals@wetherell.co.uk

wetherell.co.uk

NO ONE KNOWS MAYFAIR BETTER THAN WETHERELL