



FARM STREET

MAYFAIR, W1

AN IMPRESSIVE FREEHOLD TOWNHOUSE
OF 4,199 SQ. FT LOCATED IN THE HEART OF
MAYFAIR WITH A 360° ROOF TERRACE.





THE PROPERTY

This substantial home is arranged over five floors and proudly sits at the centre of Farm Street with stunning views of The Church of the Immaculate Conception. The ground floor comprises a large entrance hall with a separate formal dining room and a 20 foot wide reception with a large bay window. There is further reception space on the lower ground floor with a large kitchen/dining room, utility room, wine cellar, store room, plant room and guest WC.



LOCATION

Farm Street lies in a quiet enclave of Mayfair, running parallel between Mount Street and Hill Street. Close to the open green spaces of Mount Street Gardens and a short walk from both Green Park and Bond Street tube stations.



BEDROOMS

The principal bedroom suite is located on the first floor with en suite bathroom, there is a separate study and additional bedroom spanning the full width of the house. The second and third floor provide six further bedrooms, three bathrooms and an additional study. The fourth floor has a sensational roof terrace of over 550 sq. Ft providing 360 degree views of Mayfair.

Freehold House

Eight Bedrooms

Four Bathrooms

Two Reception Rooms

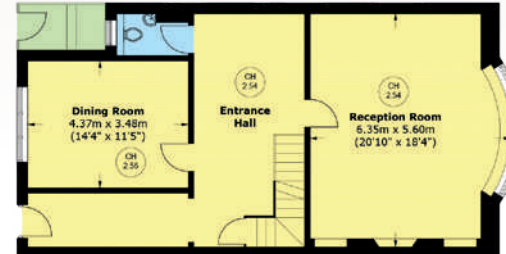
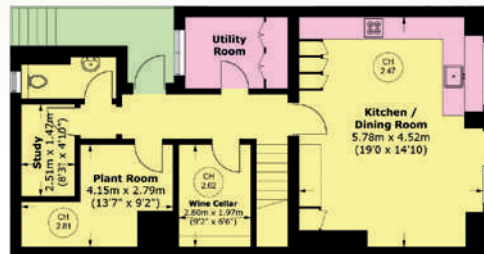
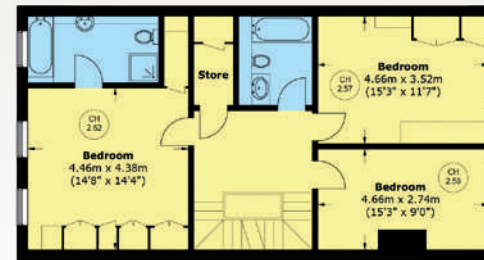
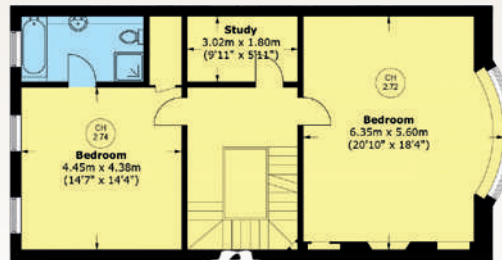
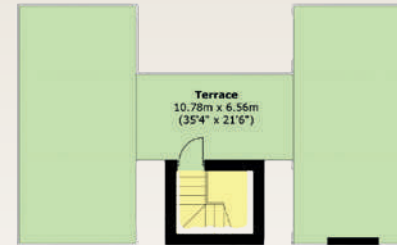
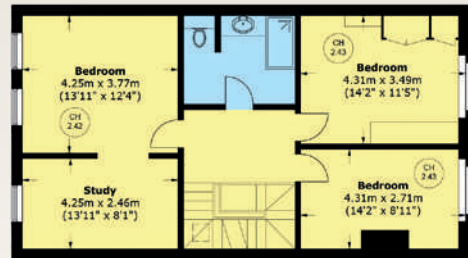
Roof Terrace

Two Studies



TOTAL AREA (APPROX):
390.2 SQ. M (4,199.9 SQ. FT)

TERRACE:
51.2 SQ. M (551.1 SQ. FT)



Guide price – £9,500,000

Tenure – Freehold

Council Tax – £1,946.32 for 2024/2025

Wetherell have no authority to make or give any representations or warranties in relation to the property. These particulars do not form part of any offer or contract and must not be relied upon as statements or representations of fact. Any areas, measurements or distances are approximate. The text, photographs and plans are for guidance only and are not necessarily comprehensive. It should not be assumed that the property has all the necessary planning, building regulation or other consents and Wetherell have not tested any services, equipment or facilities. Purchasers must satisfy themselves by inspection or otherwise. Energy Efficiency Rating: Band E.



WETHERELL
MAYFAIR'S FINEST PROPERTIES

102 Mount Street, London, W1K 2TH

020 7529 5566 • wetherell.co.uk