



**WETHERELL**  
MAYFAIR'S FINEST PROPERTIES



## CHARLES STREET, W1J

£4,875,000

An immaculate three-bedroom penthouse apartment with 3 terraces, lift, share of the freehold, parking and a live in porter.

An exceptional opportunity to acquire this turn-key duplex penthouse apartment measuring 1,603sq.ft internally with 586sq.ft of private terracing. The sixth floor comprises three double bedrooms which are all en suite, The principal bedroom has built in wardrobes, a walk in dressing area, private south facing terrace and large en suite bathroom with walk in shower and free standing bath. Bedrooms two and three each has built in storage and en suite shower rooms. There is also a guest WC.

The seventh floor provides an unrivalled space with an abundance of natural light provided by the floor to ceiling sliding doors. There is an open plan kitchen/reception room and access to two further, substantial terraces.  
(Furniture produced using CGI and are for illustration purposes only).

ROSEBERY COURT OCCUPIES A PROMINENT POSITION ON CHARLES STREET, OPPOSITE THE CHESTERFIELD MAYFAIR, AND BENEFITS FROM LIFT ACCESS AND A LIVE IN PORTER. CHARLES STREET IS ONE OF MAYFAIR'S PREMIER ADDRESSES.





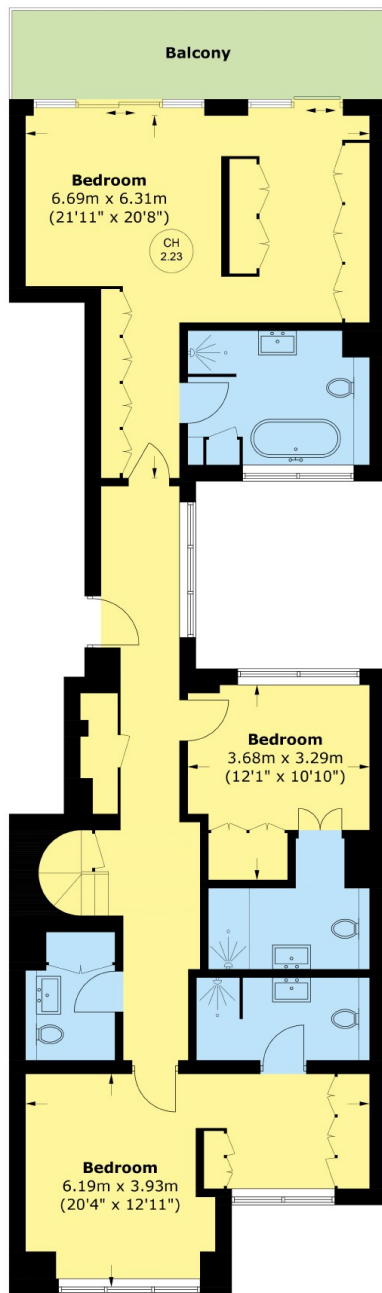
## FEATURES

- Penthouse • Three Terraces • Three Bedrooms • Two Private Parking Spaces • Share of Freehold • Lift •

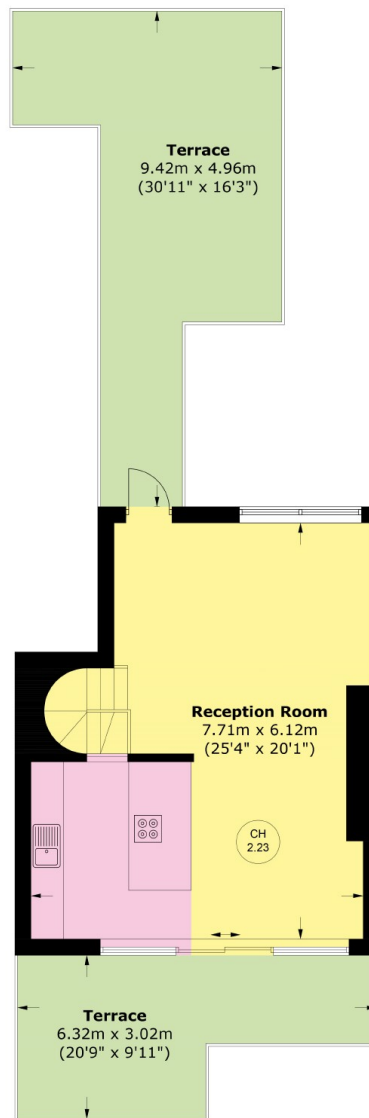




# CHARLES STREET, LONDON, W1J



**Sixth Floor**



**Seventh Floor**

Total area (approx.): 149.0 sq. m (1,603.8 sq. ft)  
Balcony / Terrace : 54.5 sq. m (586.6 sq. ft)



**WETHERELL**  
MAYFAIR'S FINEST PROPERTIES

102 Mount Street,  
London, W1K 2TH  
T: 020 7529 5566  
E: [sales@wetherell.co.uk](mailto:sales@wetherell.co.uk)

We aim to make our particulars both accurate and reliable. However they are not guaranteed; nor do they form part of an offer or contract. If you require clarification on any points then please contact us, especially if you're traveling some distance to view. Please note that appliances and heating systems have not been tested and therefore no warranties can be given as to their working order.

[wetherell.co.uk](http://wetherell.co.uk)