

NEW

TO THE MARKET  
FOR THE FIRST  
TIME IN 25 YEARS



# MOUNT STREET

MAYFAIR, W1

A three-bedroom apartment on  
iconic Mount Street with high ceilings  
and views towards Berkeley Square.





## THE PROPERTY

Measuring 1,598 sq. ft, with 3.17m ceiling heights, this elegant apartment in the heart of Mayfair village has arguably one of the best aspects and views of Mount Street. The masterpiece of the dual aspect, 25ft reception room is the large 'pepper pot' corner window framing the stunning views down Mount Street and South Audley Street. This window enjoys a south facing aspect and provides a bright and tranquil space, with fitted window seats, to take in the view in all its glory.

There is a separate kitchen at the rear of the property, three bedrooms and two bathrooms. The principal bedroom has a walk-in wardrobe, floor to ceiling French windows and access to a private balcony overlooking South Audley Street.

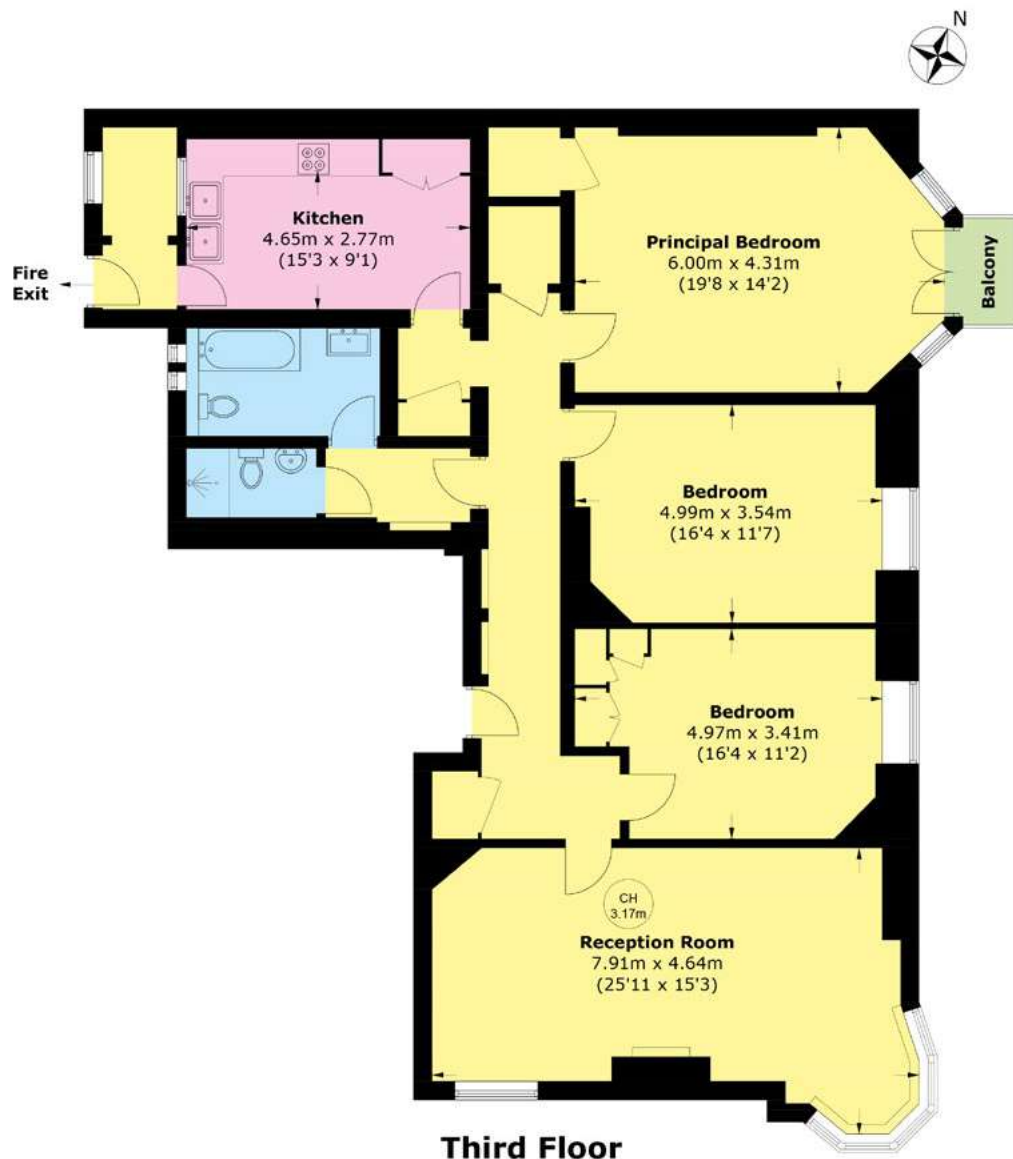
## THE AREA

Audley Mansions is a fine example of classical Mayfair architecture. This purpose-built block has a live in caretaker and a lift and is not only positioned at the best end of Mount Street, but as a South facing building, the best side of the street.

Mount Street and its surrounding streets and gardens make up one of the most unique villages in London where International luxury brands rub shoulders with heritage, craftsmen, and Michelin star dining.







TOTAL AREA (APPROX.): 1,598.4 SQ. FT (148.5 SQ. M)  
BALCONY: 16.1 SQ. FT (1.5 SQ. M)



MOUNT STREET • CORNER POSITION  
BALCONY • THREE BEDROOMS  
LIFT • LIVE IN CARETAKER

**Price:** £4,175,000  
**Tenure:** Leasehold, approximately 101 years remaining  
**Service charge:** Approximately £4,555 per annum  
**Sole Selling Agents**



Wetherell have no authority to make or give any representations or warranties in relation to the property. These particulars do not form part of any offer or contract and must not be relied upon as statements or representations of fact. Any areas, measurements or distances are approximate. The text, photographs and plans are for guidance only and are not necessarily comprehensive. It should not be assumed that the property has all the necessary planning, building regulation or other consents and Wetherell have not tested any services, equipment or facilities. Purchasers must satisfy themselves by inspection or otherwise. March 2025.



**WETHERELL**  
MAYFAIR'S FINEST PROPERTIES

102 Mount Street, London, W1K 2TH  
020 7529 5566 • wetherell.co.uk