



WETHERELL
MAYFAIR'S FINEST PROPERTIES



ADDISON ROAD, W14

£17,500,000

A superb, detached freehold villa on the iconic Addison Road in prime Holland Park.

Set over four floors and measuring 6,497 sq. Ft, this substantial house offers great potential for reconfiguration and modernisation throughout creating a very special family abode.

Currently laid out with 12 bedrooms, 6 bathrooms and 4 reception rooms, this property provides substantial living and entertaining space. There is also a large west facing terrace and wide, lawned garden with a walled and mature shrub perimeter. The connecting garage offers parking for multiple cars and there is an 'in-and-out' driveway.

It is also close to good schools within the Holland Park area and the green open spaces of Holland Park are only a short walk away, along with good transport links at Holland Park Avenue

ADDISON ROAD IS A QUIET STREET LOCATED CLOSE TO THE LOCAL AMENITIES OF HOLLAND PARK AND NOTTING HILL, AS WELL AS WESTFIELD SHOPPING CENTRE AND HIGH STREET KENSINGTON.

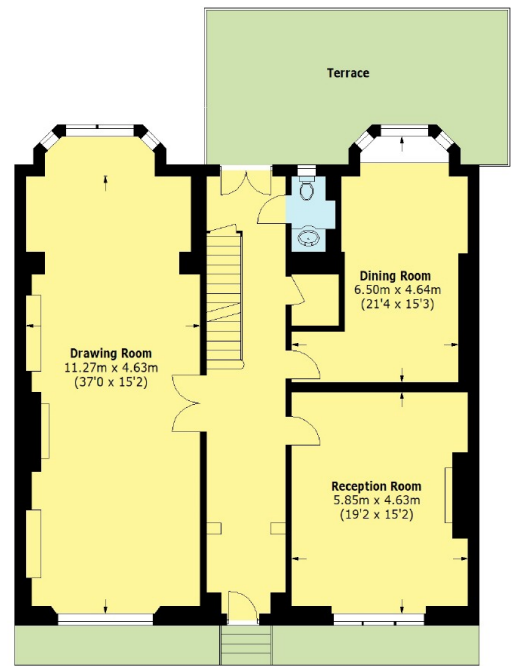
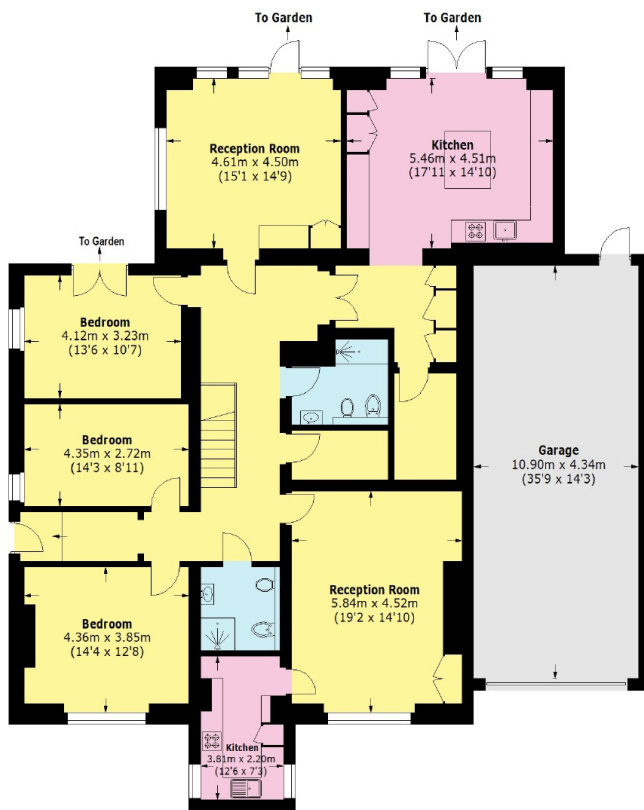
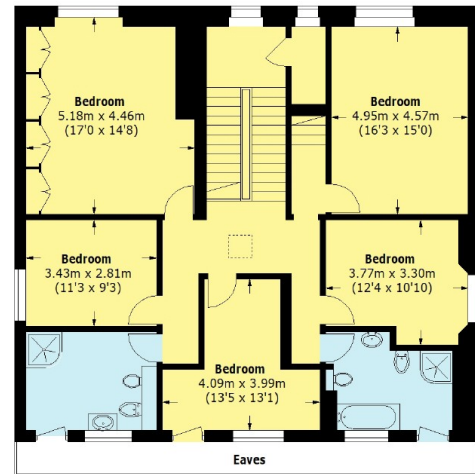
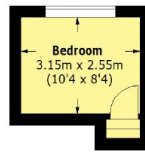


FEATURES

- Freehold • Holland Park Villa • 6,497 sq. ft • 12 bedrooms • Garden • Garage •



ADDISON ROAD, LONDON, W14



Total area (approx.): 603.6 sq. m (6,497.0 Sq. ft)
 Garage: 47.5 sq. m (511.3 Sq. ft)
 Terrace: 29.9 sq. m (321.8 Sq. ft)