

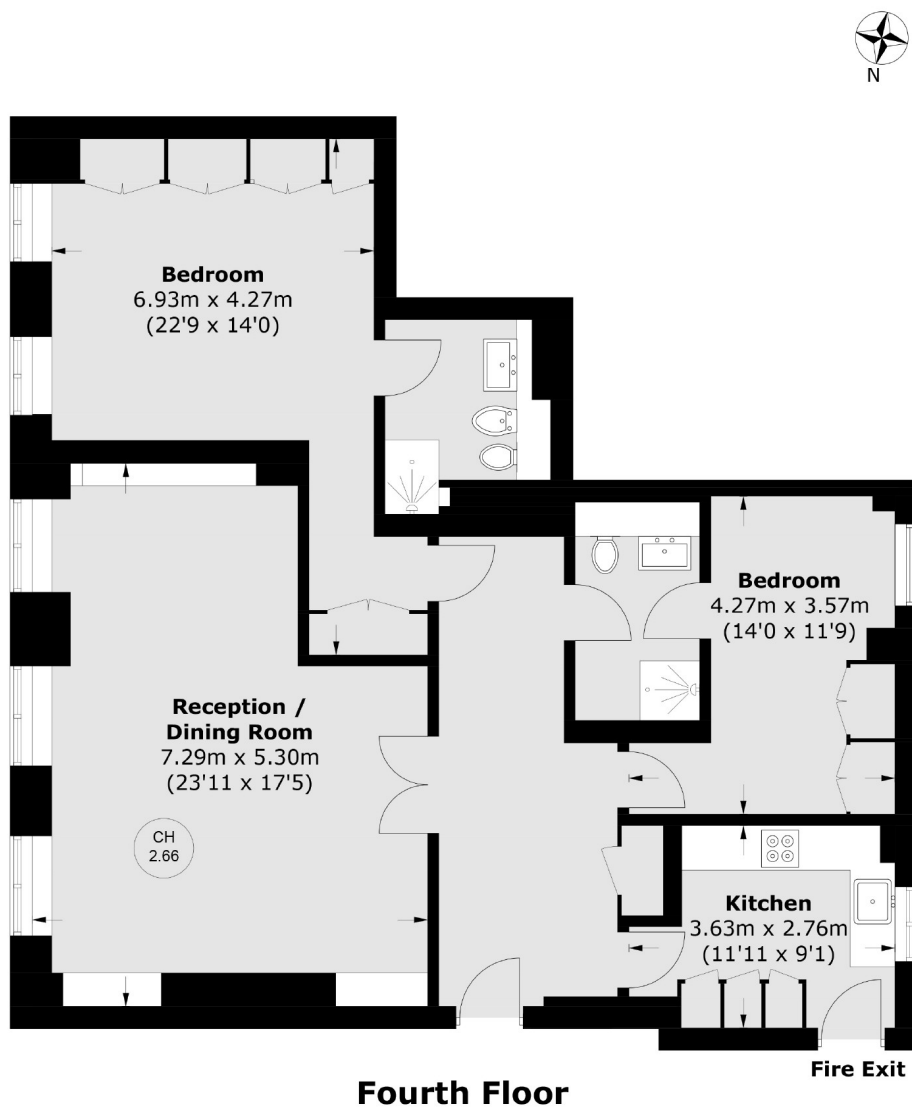


PARK STREET

MAYFAIR W1K



WITHIN ONE OF MAYFAIR'S PREMIER PORTERED BUILDINGS, A TWO BEDROOM, TWO BATHROOM LATERAL APARTMENT ON THE FOURTH FLOOR WITH VIEWS OVER PARK STREET.



Total area (approx.): 107.7 sq. m (1,159.3 sq. ft)



Within one of Mayfair's premier portered buildings, a two bedroom, two bathroom lateral apartment on the fourth floor with views over Park Street.



Fountain House is located in the heart of Mayfair village, close to Hyde Park and the boutiques and restaurants on Mount Street.

FEATURES

- Two Double Bedrooms
- Two Bathrooms
- Lift
- 24hr Porter
- Wooden Floors
- Unfurnished

Price: £1,250 Per week

We aim to make our particulars both accurate and reliable. However they are not guaranteed; nor do they form part of an offer or contract. If you require clarification on any points then please contact us, especially if you're traveling some distance to view. Please note that appliances and heating systems have not been tested and therefore no warranties can be given as to their working order. Energy Rating: C



WETHERELL
MAYFAIR'S FINEST PROPERTIES

102 Mount Street • London • W1K 2TH
T: 020 7529 5588 E: rentals@wetherell.co.uk

wetherell.co.uk

NO ONE KNOWS MAYFAIR BETTER THAN WETHERELL