



WETHERELL
MAYFAIR'S FINEST PROPERTIES



NORTH AUDLEY STREET, W1K

£5,000 PER WEEK

A brand newly renovated, lateral apartment in this highly sought after portered building near to Hyde Park and Grosvenor Square.

Interior designed, and finished to an exceptional standard throughout, the property comprises of a large welcoming entrance hall, double reception room with dining area and space for entertaining, separate fully integrated kitchen, four double bedrooms and three luxury bathrooms.

Further benefits include high ceilings, wooden flooring, air conditioning and secondary glazing.

NORTH AUDLEY STREET IS CONVENIENTLY LOCATED CLOSE TO SELFRIDGES AND ALL THE AMENITIES AND TRAVEL LINKS OF BOND STREET AND MARBLE ARCH UNDERGROUND STATIONS.

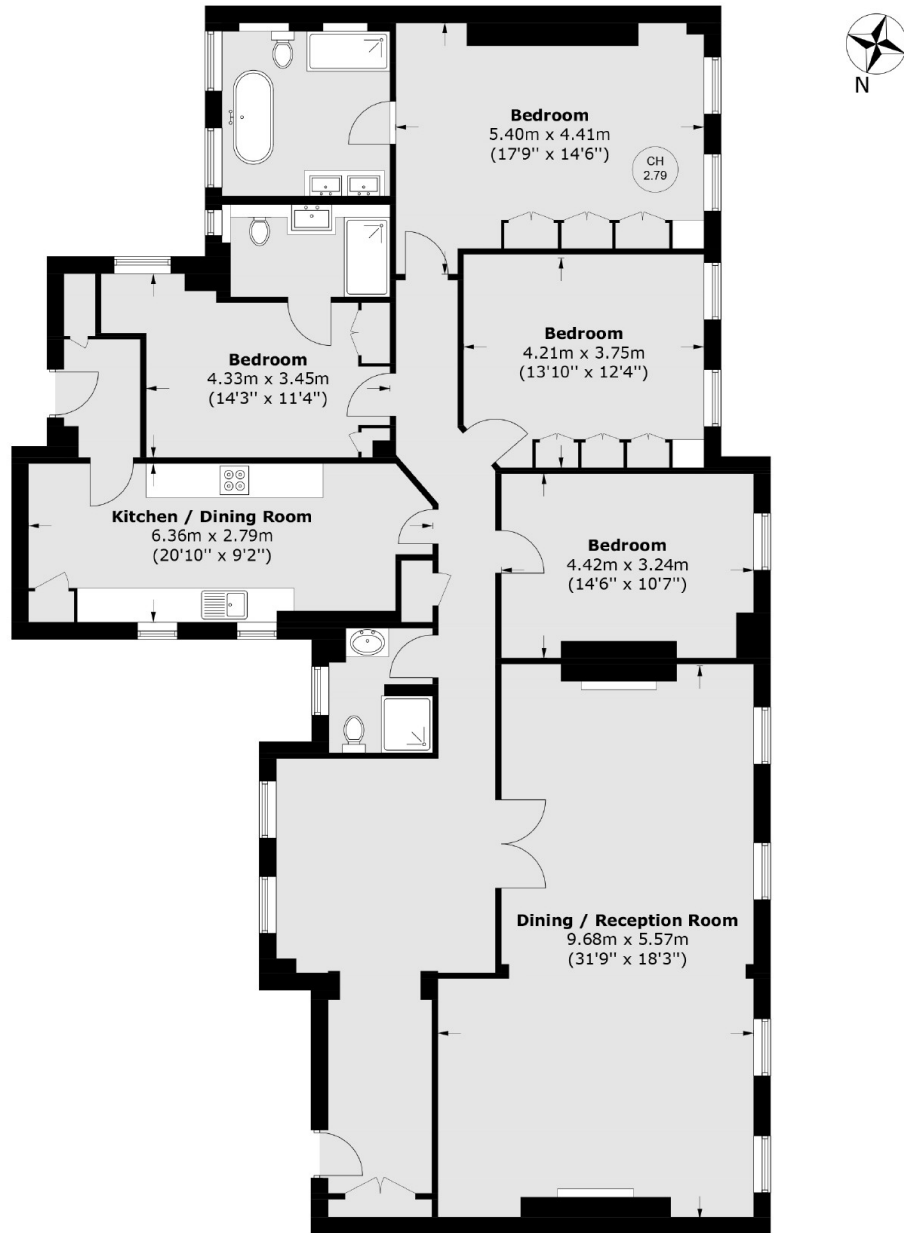


FEATURES

- Four Bedrooms • Three Luxury Bathrooms • Lift Access • Portered Building • Separate Fully Integrated Kitchen • Wooden Flooring •



NORTH AUDLEY STREET, LONDON, W1K



First Floor

Total area (approx.): 191.0 sq. m (2,056.4 sq. ft)



WETHERELL
MAYFAIR'S FINEST PROPERTIES

102 Mount Street,
London, W1K 2TH
T: 020 7529 5566
E: sales@wetherell.co.uk

We aim to make our particulars both accurate and reliable. However they are not guaranteed; nor do they form part of an offer or contract. If you require clarification on any points then please contact us, especially if you're traveling some distance to view. Please note that appliances and heating systems have not been tested and therefore no warranties can be given as to their working order.

wetherell.co.uk