



WETHERELL

MAYFAIR'S FINEST PROPERTIES



DAVIES STREET, W1K

£2,300 PER WEEK

This beautifully presented top floor three bedroom apartment is located in one of Mayfair's most highly sought after buildings, Claridge House and within close proximity to the world renowned Claridge's and the world class shopping on Mount Street and New Bond Street.

Accessed via a lift and 24 hour uniformed portage from the grand lobby of Claridge House, the property is situated on the sixth floor.

Upon entering the property one is greeted by a spacious entrance hall which leads on to the living, entertaining and dining space.

The apartment comprises of a spacious principal bedroom with en suite bathroom and two further bedrooms offering ample storage space, an additional bathroom, and a modern kitchen.

CLARIDGE HOUSE IS A HANDSOME REDBRICK RESIDENTIAL BUILDING IN THE HEART OF MAYFAIR. THE ENVIABLE LOCATION IS JUST MOMENTS FROM GROSVENOR SQUARE AND BOND STREET, TOGETHER WITH THE WIDER BOUTIQUE SHOPS, & RESTAURANTS.

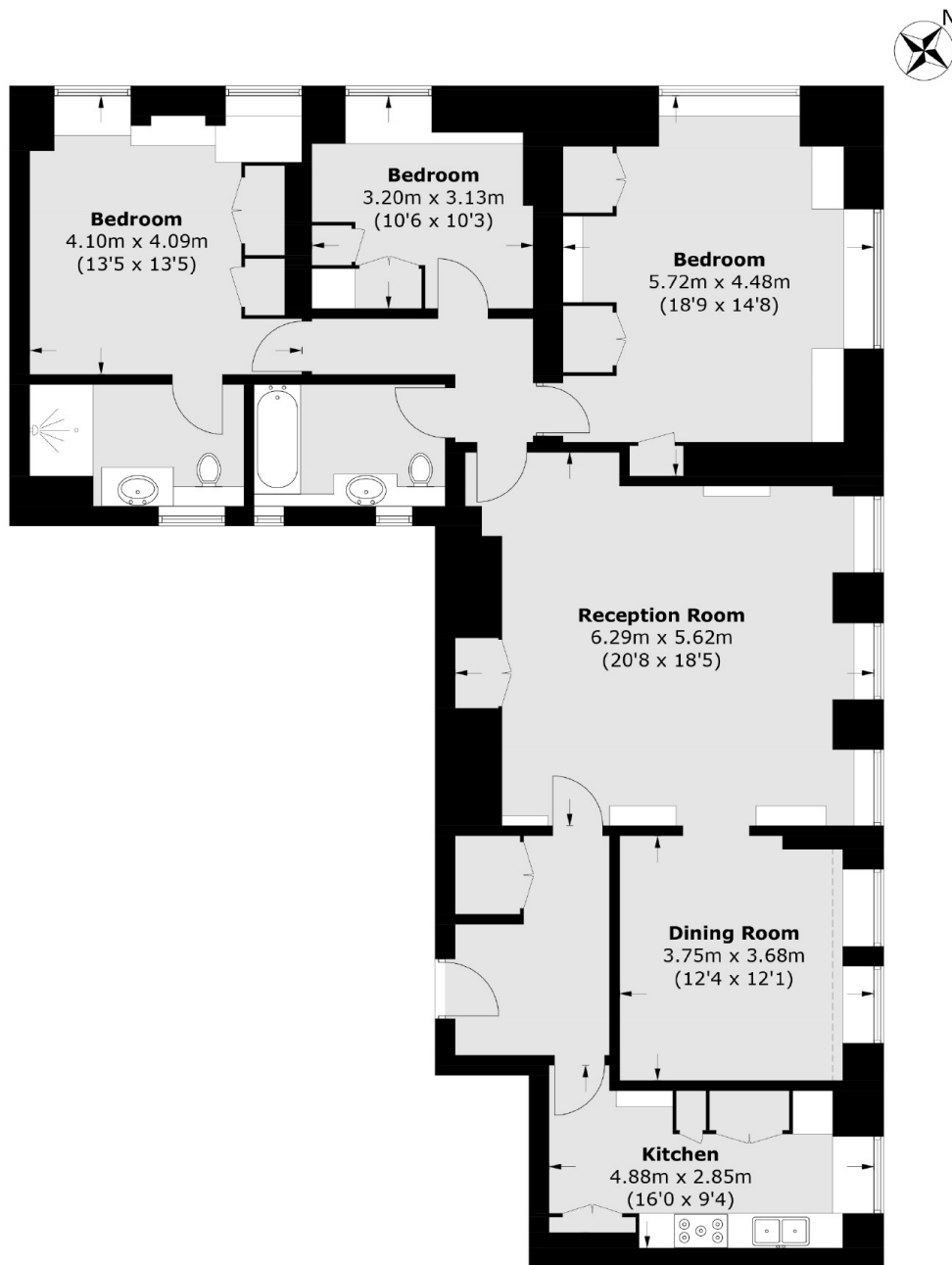


FEATURES

- Three Bedrooms • Two Bathrooms • 24 Hour Portage • Top Floor (Lift Access) • Lateral • World Renowned Location •



DAVIES STREET, LONDON, W1K



Sixth Floor

Total area (approx.): 136.8 sq. m (1,472.5 sq. ft)



WETHERELL
MAYFAIR'S FINEST PROPERTIES

102 Mount Street,
London, W1K 2TH
T: 020 7529 5566
E: sales@wetherell.co.uk

We aim to make our particulars both accurate and reliable. However they are not guaranteed; nor do they form part of an offer or contract. If you require clarification on any points then please contact us, especially if you're traveling some distance to view. Please note that appliances and heating systems have not been tested and therefore no warranties can be given as to their working order.

wetherell.co.uk