



WETHERELL
MAYFAIR'S FINEST PROPERTIES



CHARLES STREET, W1J

£7,500 PER WEEK

Situated on the ground floor of a highly sought after portered building, is this stunning three bedroom property on Charles Street, which has been newly renovated with no expense spared.

The apartment offers flexible living and entertaining space. Upon entering, there is a generous hallway, leading onto a spacious and bright reception room, followed by open plan kitchen/dining room, boasting bespoke Lasvit lighting, hidden Amina speakers and air conditioning.

The kitchen has been impeccably designed, with marble worktops, mirrored wall panels as well as a large island in the centre. The property comprises of two large double bedrooms, each with en suite bathrooms, as well as a self contained family room that can also act as a studio.

At the back of the apartment, there is a fully fitted utility room, with cooking facilities and separate entrance. The building has day portage and also has a serene communal garden.

ONE OF MAYFAIR'S MOST HIGHLY REGARDED RESIDENTIAL STREETS, CHARLES STREET IS MOMENTS AWAY FROM BUSTLING BERKELEY SQUARE, AND THE PRESTIGIOUS MOUNT STREET WHICH BOASTS HIGH END SHOPPING BOUTIQUES AND RESTAURANTS.

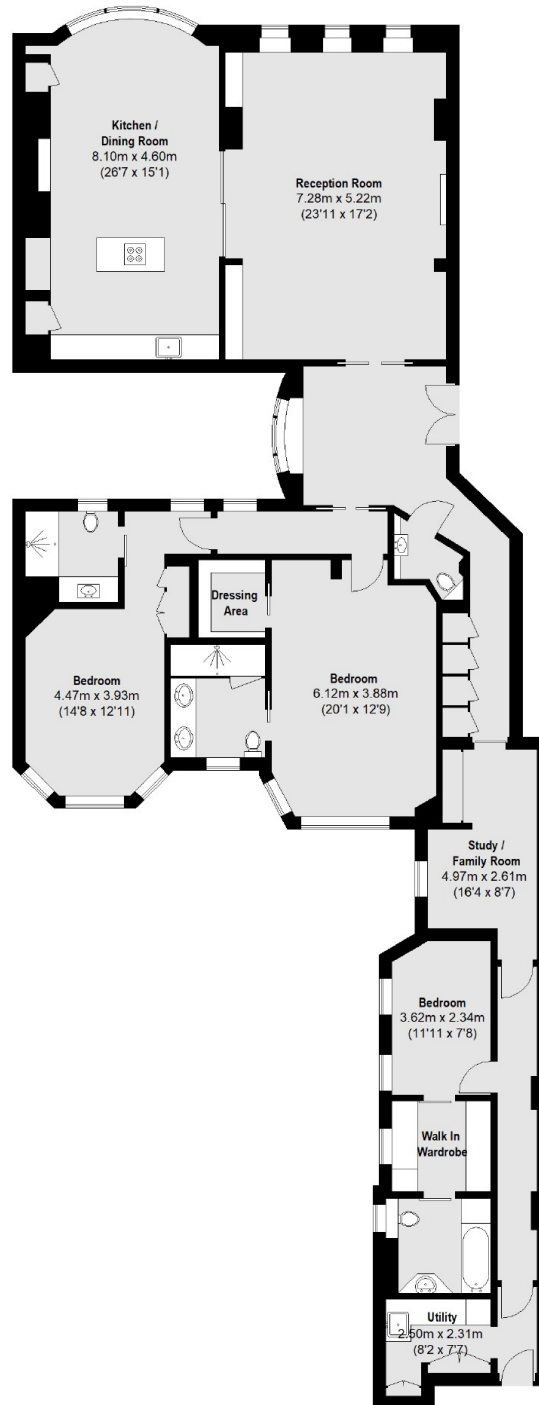


FEATURES

- Three Bedrooms • Three Bathrooms • High Ceilings • Luxury Fixtures, Fittings & Furnishings • Excellent Location • Air Conditioning •



CHARLES STREET, LONDON, W1J



Ground Floor

Total area (approx.): 212.97 sq. m (2292 sq. ft)



WETHERELL
MAYFAIR'S FINEST PROPERTIES

102 Mount Street,
London, W1K 2TH
T: 020 7529 5566
E: sales@wetherell.co.uk

We aim to make our particulars both accurate and reliable. However they are not guaranteed; nor do they form part of an offer or contract. If you require clarification on any points then please contact us, especially if you're traveling some distance to view. Please note that appliances and heating systems have not been tested and therefore no warranties can be given as to their working order.

wetherell.co.uk