

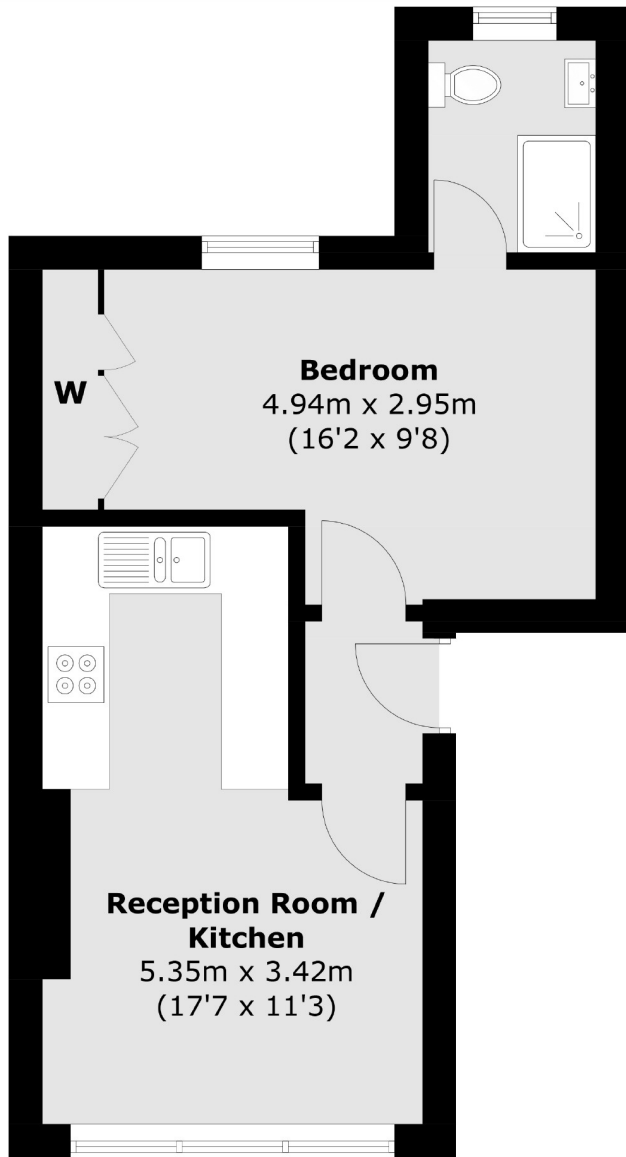


# WOODSTOCK STREET

## MAYFAIR W1C



A RECENTLY REFURBISHED ONE BEDROOM APARTMENT SITUATED ON THE SECOND FLOOR OF THIS ATTRACTIVE BUILDING CLOSE TO OXFORD STREET. THE PROPERTY BENEFITS FROM AN OPEN PLAN RECEPTION ROOM, SHOWER ROOM AND FULLY FITTED KITCHEN.



Total area (approx.): 33.2 sq. m (358.0 sq. ft)

We aim to make our particulars both accurate and reliable. However they are not guaranteed; nor do they form part of an offer or contract. If you require clarification on any points then please contact us, especially if you're traveling some distance to view. Please note that appliances and heating systems have not been tested and therefore no warranties can be given as to their working order. Energy Rating: C



A recently refurbished one bedroom apartment situated on the second floor of this attractive building close to Oxford Street. The property benefits from an open plan reception room, shower room and fully fitted kitchen.

This building is conveniently located close to New Bond Street with Oxford Circus and Marble Arch tube stations only moments away.

#### FEATURES

- Recently Refurbished
- Second Floor
- Spacious Double Bedroom
- Open-Plan
- Modern Shower Room
- Wooden Flooring

Price: £600 Per week



# WETHERELL

MAYFAIR'S FINEST PROPERTIES

102 Mount Street • London • W1K 2TH  
T: 020 7529 5588 E: rentals@wetherell.co.uk

wetherell.co.uk

NO ONE KNOWS MAYFAIR BETTER THAN WETHERELL