



**WETHERELL**  
MAYFAIR'S FINEST PROPERTIES



## UPPER GROSVENOR STREET, W1K

£15,650,000

An exceptional four bedroom apartment with high ceilings and private terrace on one of Mayfair's premier streets. Situated moments from Grosvenor Square, this duplex apartment measures 4291 square feet and occupies the whole of the raised ground and lower ground floors of this prestigious white stucco fronted, period building.

The raised ground floor accommodation provides impressive entertaining space with 32 foot wide reception room with 4 metre ceiling heights and three large sash windows overlooking Upper Grosvenor Street. There is a study off the hallway and a guest WC. At the rear of the property is the kitchen with integrated Miele appliances and substantial island, and a grand dining room with feature fireplace and ornate coricing.

On the lower ground floor there are four double bedrooms and two private terraces. The principal suite has direct access on to the south facing terrace, along with a large dressing room and en suite bathroom with separate bath and walk in shower, There are three further bedroom suites, two with built in wardrobes and en suite bathrooms. The second terrace is accessed from the hallway and second bedroom, with a separate utility room and guest bathroom.

UPPER GROSVENOR STREET IS ONE OF MAYFAIR'S PREMIER ADDRESSES RUNNING BETWEEN GROSVENOR SQUARE AND PARK LANE. WITH A QUINTESSENTIALLY BRITISH CHARM THIS AREA OFFERS THE FINEST CRAFTSMANSHIP AND ELITE BRANDS.

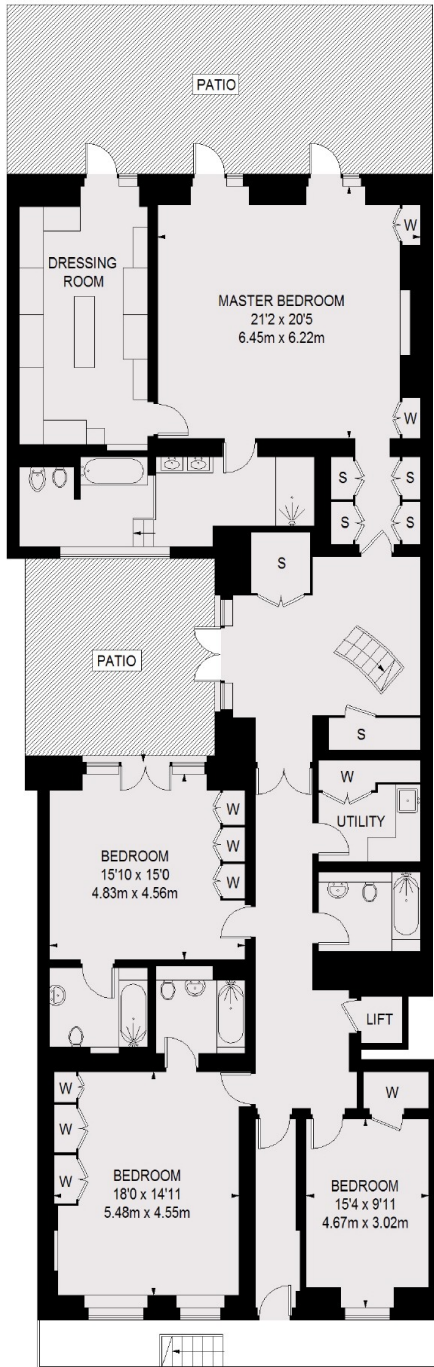


## FEATURES

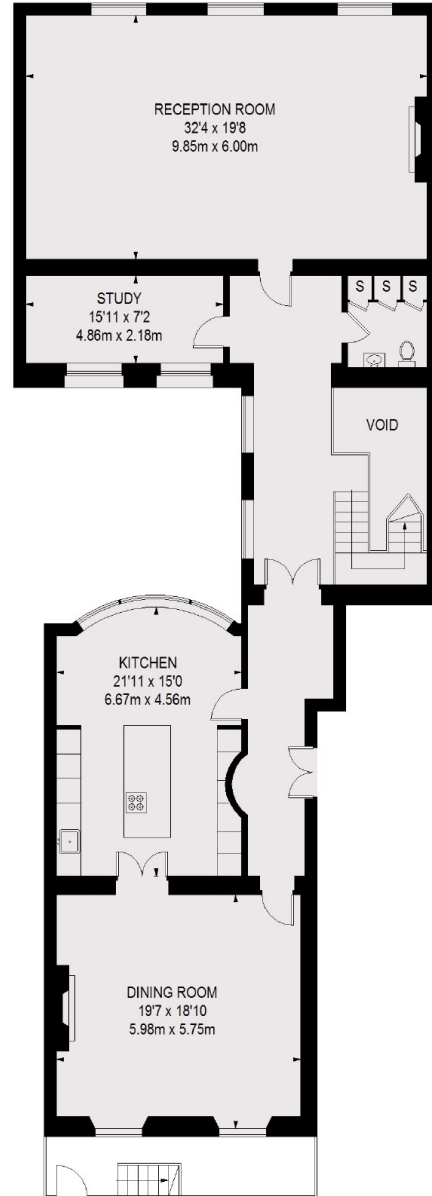
- Prime Mayfair Street • Two Reception Rooms • Four Metre Ceiling Heights • Study • Four Bedrooms • Four Bathrooms •



# UPPER GROSVENOR STREET, LONDON, W1K



LOWER GROUND FLOOR



GROUND FLOOR

TOTAL APPROX. FLOOR AREA (EXCLUDING VOID / LIFT)  
4291 SQ FT. (398.65 SQ M)



**WETHERELL**  
MAYFAIR'S FINEST PROPERTIES

102 Mount Street,  
London, W1K 2TH  
T: 020 7529 5566  
E: sales@wetherell.co.uk

We aim to make our particulars both accurate and reliable. However they are not guaranteed; nor do they form part of an offer or contract. If you require clarification on any points then please contact us, especially if you're traveling some distance to view. Please note that appliances and heating systems have not been tested and therefore no warranties can be given as to their working order.

wetherell.co.uk