



WETHERELL

MAYFAIR'S FINEST PROPERTIES



PARK STREET, W1K

£2,395 PER WEEK

Within one of Mayfair's premier portered buildings, a newly renovated two double bedroom, two bathroom apartment.

This stylish apartment has been meticulously designed to cater for modern city living.

The spacious double reception is ideal for relaxing and entertaining, and the kitchen has been fitted with the latest contemporary appliances.

Two large bedrooms with built-in wardrobes and luxury bathrooms complete the accommodation of this newly renovated flat. Air-conditioning has been fitted throughout.

FOUNTAIN HOUSE IS LOCATED IN THE HEART OF MAYFAIR VILLAGE, CLOSE TO HYDE PARK AND THE BOUTIQUES AND RESTAURANTS ON MOUNT STREET.

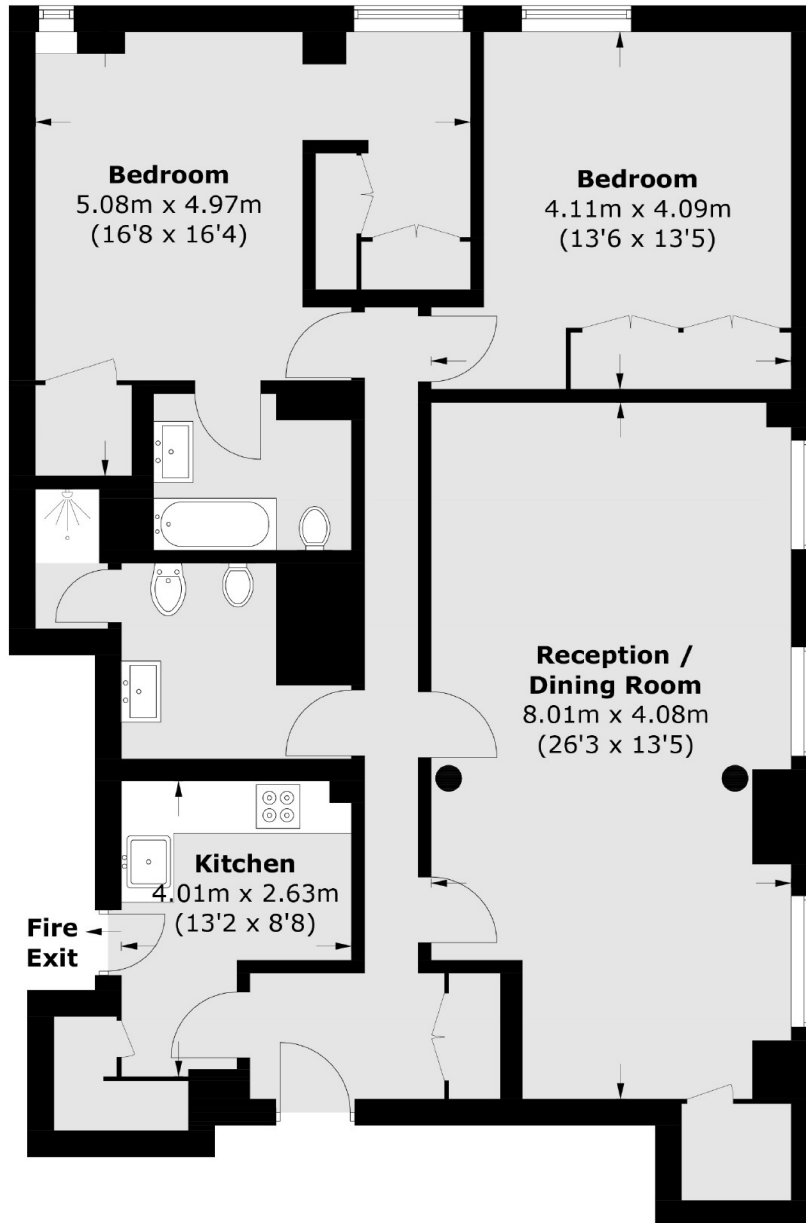


FEATURES

- Two Double Bedrooms • Two Bathrooms • Lift Access • 24-Hour Porter • Wooden Floors • Excellent Location •



PARK STREET,
LONDON, W1K



Total area (approx.): 103.1 sq. m (1,109.7 sq. ft)



WETHERELL
MAYFAIR'S FINEST PROPERTIES

102 Mount Street,
London, W1K 2TH
T: 020 7529 5566
E: sales@wetherell.co.uk

We aim to make our particulars both accurate and reliable. However they are not guaranteed; nor do they form part of an offer or contract. If you require clarification on any points then please contact us, especially if you're traveling some distance to view. Please note that appliances and heating systems have not been tested and therefore no warranties can be given as to their working order.

wetherell.co.uk