



SOUTH AUDLEY STREET

MAYFAIR, W1K

A TWO-BEDROOM APARTMENT SHOWCASING THE EPITOME
OF STYLE IN THE HEART OF MAYFAIR VILLAGE



ACCOMMODATION AND AMENITIES

Brand new and intensively remodelled occupying the entire second floor of this period building and measuring 1,712 sq.ft, this apartment combines modern décor with period charm, with high ceilings throughout.

Off the large entrance hall and separated by floor to ceiling Crittall doors is the formal dining space, which leads onto the balcony overlooking historic Mayfair with immediate views of Grosvenor Chapel and Mount Street Gardens.

Adjacent to the formal dining room, there is the main reception room with feature fireplace and large bay window. The opposite side hosts the second bedroom replicating the east facing bay window, with a walk-through dressing space leading into the striking green marble bathroom.

To the rear lies the family kitchen and principal bedroom suite, also with a walk-through wardrobe and separate white marble clad ensuite with dual vanity units.

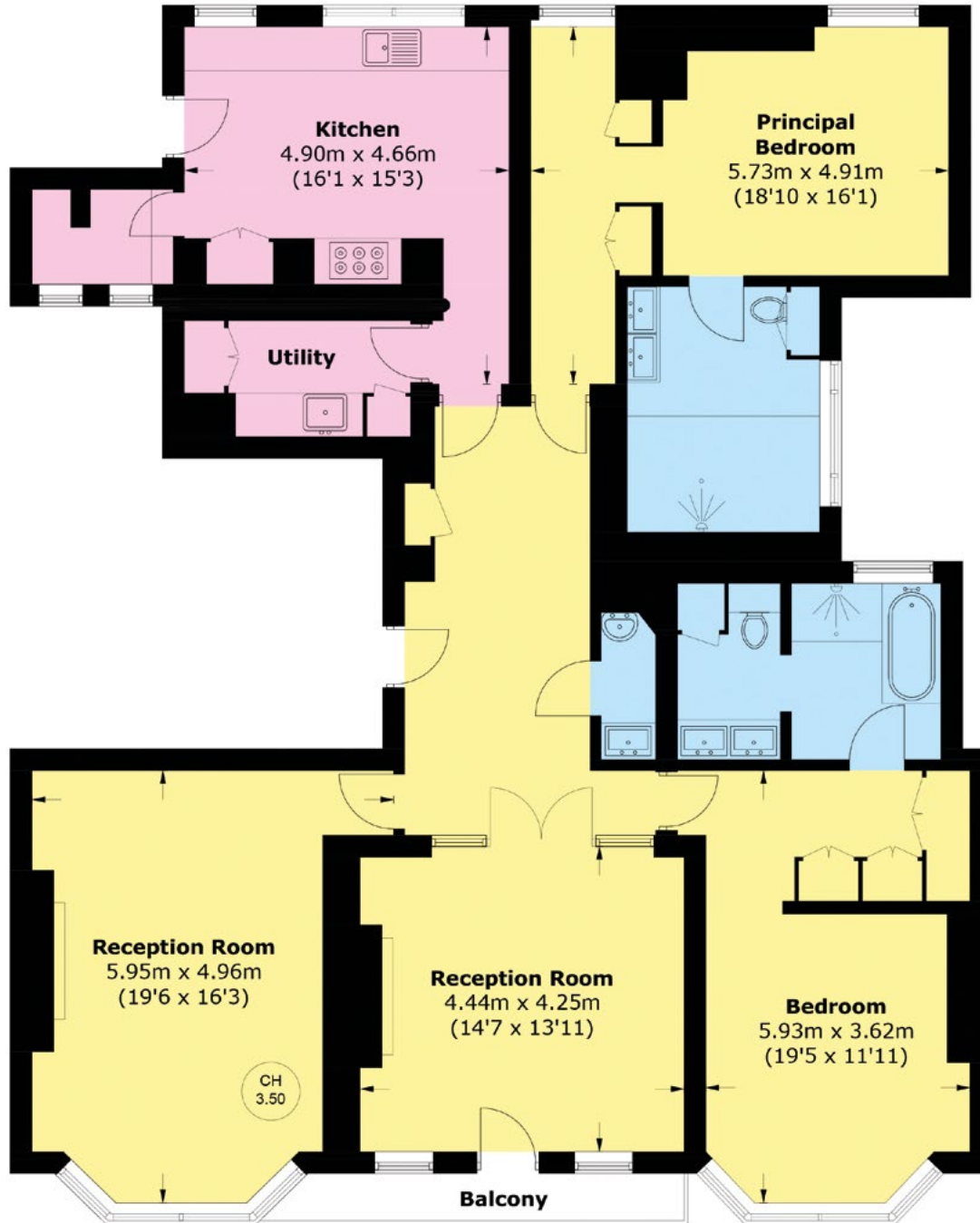
LOCATION

South Audley Street is perfectly located for the various boutiques, restaurants, and hotels of central Mayfair: It runs between Grosvenor Square and Curzon Street with world renowned George and Harry's Bar on your doorstep.

Situated a stone's throw from Mayfair's Farm Shop and boasting east and west facing aspects. Moments from Mount Street Gardens, the apartment offers prospective buyers the epitome of Mayfair living.



TOTAL AREA (APPROX.): 159.1 SQ. M (1,712.5 SQ. FT)



Sole Selling Agent

Ground Rent: A peppercorn per annum

Leasehold: 141 years

Price: £6,250,000



WETHERELL
MAYFAIR'S FINEST PROPERTIES

102 Mount Street, London, W1K 2TH
020 7529 5566 • wetherell.co.uk

Wetherell have no authority to make or give any representations or warranties in relation to the property. These particulars do not form part of any offer or contract and must not be relied upon as statements or representations of fact. Any areas, measurements or distances are approximate. The text, photographs and plans are for guidance only and are not necessarily comprehensive. It should not be assumed that the property has all the necessary planning, building regulation or other consents and Wetherell have not tested any services, equipment or facilities. Purchasers must satisfy themselves by inspection or otherwise. Energy Efficiency Rating: Band C. November 2024.