

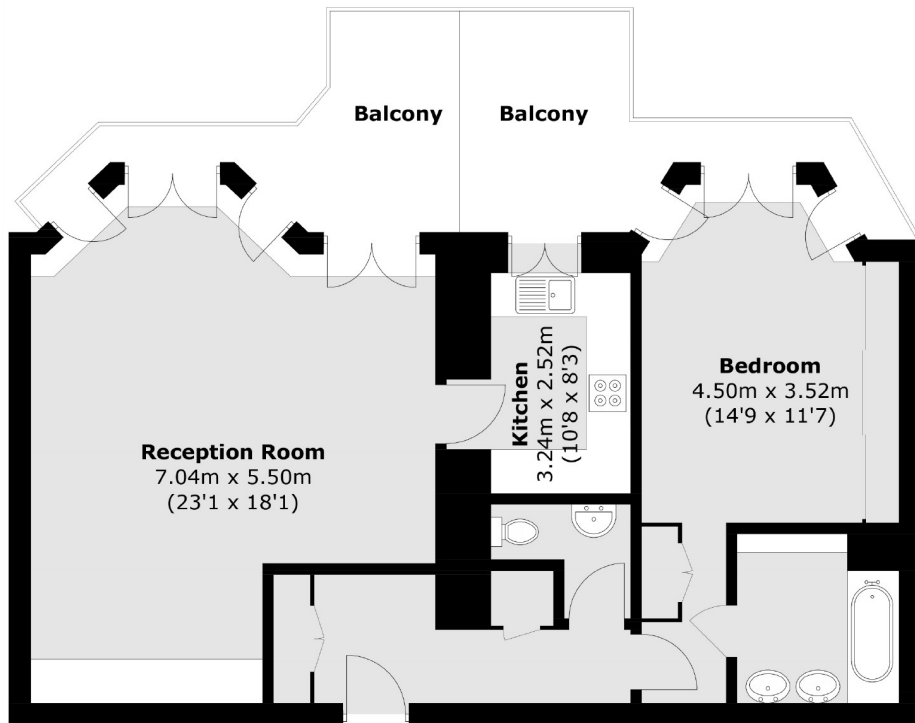


# PARK STREET

## MAYFAIR W1K



A MODERN ONE BEDROOM APARTMENT SITUATED ON THE FIRST FLOOR  
(WITH LIFT) OF THIS PERIOD BUILDING.



Total area (approx.): 77.3 sq. m (832.0 sq. ft)  
Balcony: 18.0 sq. m (193.7 sq. ft)

We aim to make our particulars both accurate and reliable. However they are not guaranteed; nor do they form part of an offer or contract. If you require clarification on any points then please contact us, especially if you're traveling some distance to view. Please note that appliances and heating systems have not been tested and therefore no warranties can be given as to their working order. Energy Rating: D



The apartment benefits from a spacious living room, modern kitchen, large bedroom & guest WC with high ceilings throughout.

Park Street runs from Oxford street, parallel to Hyde Park which offers residents expansive green open spaces along with garden square within walking distance too.

Set close to Oxford Street and Marble Arch stations, this property is located within easy reach of the shops and restaurants of Mayfair.

#### FEATURES

- Spacious Double Bedroom
- First Floor
- Lift Access
- Furnished
- Private Balcony
- Excellent Location

Price: £1,400 Per week



**WETHERELL**  
MAYFAIR'S FINEST PROPERTIES

102 Mount Street • London • W1K 2TH  
T: 020 7529 5588 E: rentals@wetherell.co.uk

wetherell.co.uk

NO ONE KNOWS MAYFAIR BETTER THAN WETHERELL