



**WETHERELL**  
MAYFAIR'S FINEST PROPERTIES



## ARLINGTON STREET, SW1A

£10,000 PER WEEK

Stunning triplex penthouse apartment with private roof terrace situated in the desirable Walpole Mayfair, once occupied by Prime Minister Sir Robert Walpole.

The Walpole is a prestigious development of two period townhouses adjacent to the Ritz and was once occupied by Sir Robert Walpole who is considered the first prime minister and served his term in power between 1721-1742.

The building benefits from a 24-hour concierge and lift access. Located on Arlington Street which has been home to princes, Prime Ministers, and impresarios ever since King Charles II gifted the plot to Henry Bennett, 1st Earl of Arlington.

The apartment provides lift access directly to both the fifth and sixth floors. The three bedrooms are located on the fifth floor and has a large entrance hall which has been finished with marble flooring and showcases the impressive bespoke staircase which wraps around a double height Swarovski Crystal chandelier.

THE PROPERTY IS LOCATED AT THE NORTHERN END OF ARLINGTON STREET JUST OPPOSITE THE RITZ HOTEL, WITH BUCKINGHAM PALACE AND GREEN PARK A SHORT WALK AWAY.

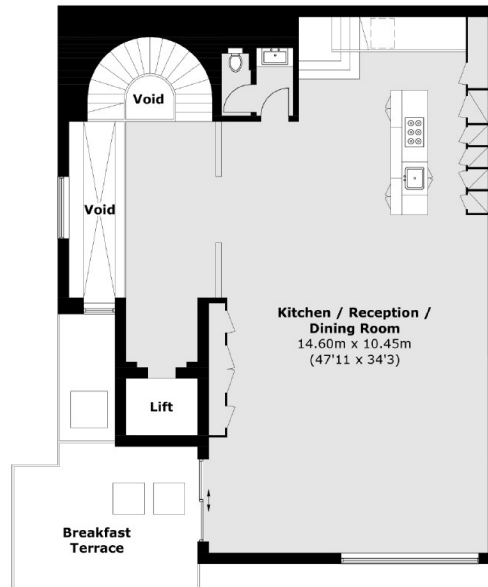
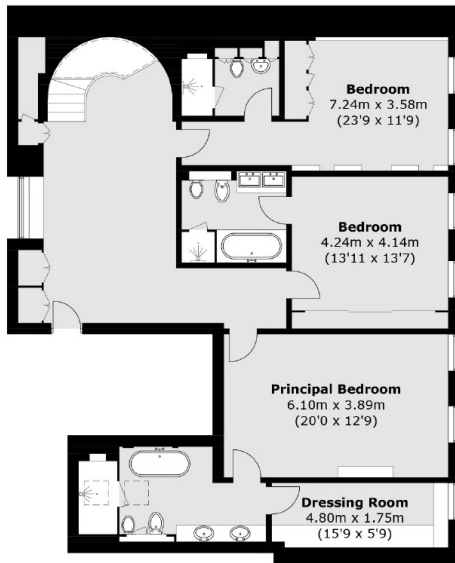
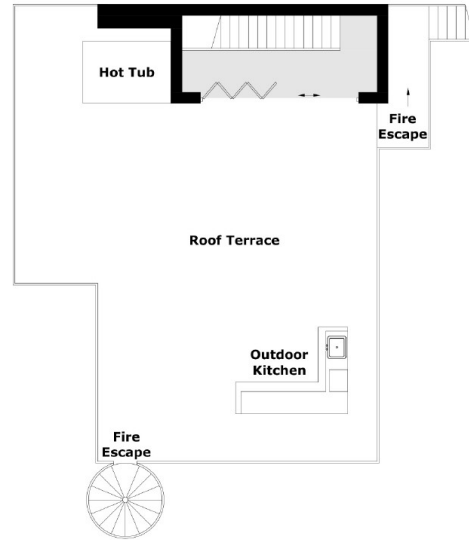


## FEATURES

- Three Double Bedrooms • Three En Suite Bathrooms • High Standard Finish • Large Private Terrace • Direct Lift Access • 24 Hour Porter •



# ARLINGTON STREET, LONDON, SW1A



Total area (approx.): 285.5 sq. m (3,073.1 sq. ft)  
(Excluding Lift)  
Terrace area (approx.): 127.9 sq. m (1,376.7 sq. ft)