



WETHERELL
MAYFAIR'S FINEST PROPERTIES



ARLINGTON STREET, SW1A

£2,000 PER WEEK

A luxurious split level apartment located in the exclusive area of St James' near to the world renowned Ritz Hotel London. The accommodation comprises a large reception, separate kitchen, two large doubles bedrooms, both en suite and garden.

This stunning property offers plenty of entertaining spaces on the ground floor, with the garden connecting to the kitchen and dining area. The lower ground floor features a luxurious principal bedroom with en-suite bathroom, complete with a standalone bathtub and floor-to-ceiling marble finishes and a spacious second bedroom with its own en-suite.

Throughout the apartment, Crestron technology and Lutron lighting ensures a smooth operation of lighting, shade, media, security and other features via touchscreen panels. Further specifications include gas fire places in the living room and principal en suite, air conditioning, electric underfloor heating in the bathrooms.

RYGER HOUSE IS A PRESTIGIOUS RESIDENTIAL DEVELOPMENT LOCATED TO IN THE HEART OF ST JAMES, IMMEDIATELY TO THE EAST OF GREEN PARK, TO THE SOUTH OF MAYFAIR AND NORTH OF ST JAMES'S PARK.

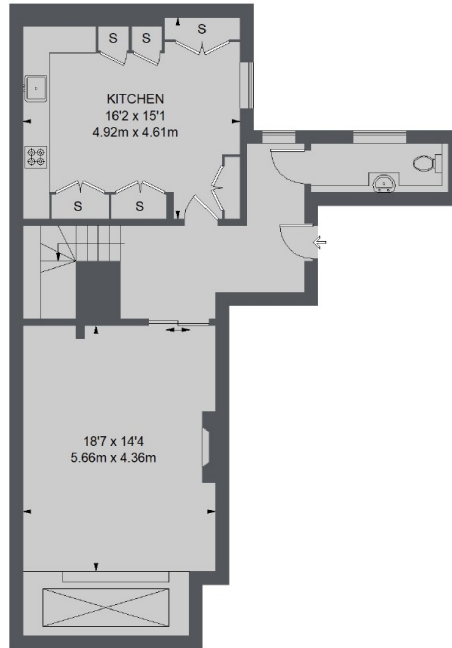


FEATURES

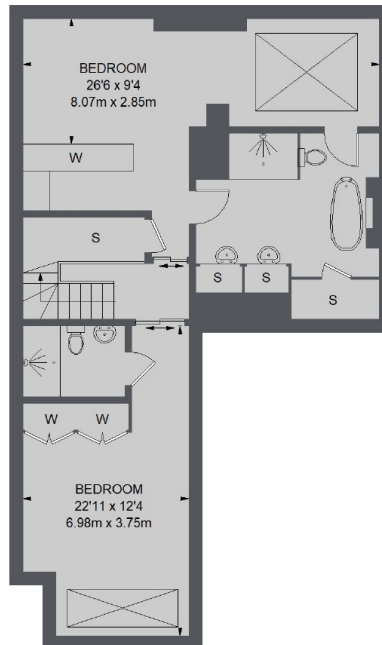
- Two Double Bedrooms • Two Luxury Bathrooms • Air Conditioning • Crestron Home Automation • Wooden Flooring • Garden •



ARLINGTON STREET, LONDON, SW1A



GROUND FLOOR



LOWER GROUND FLOOR

TOTAL APPROX. FLOOR AREA
1639 SQ. FT. (152.29 SQ. M.)



WETHERELL
MAYFAIR'S FINEST PROPERTIES

102 Mount Street,
London, W1K 2TH
T: 020 7529 5566
E: sales@wetherell.co.uk

We aim to make our particulars both accurate and reliable. However they are not guaranteed; nor do they form part of an offer or contract. If you require clarification on any points then please contact us, especially if you're traveling some distance to view. Please note that appliances and heating systems have not been tested and therefore no warranties can be given as to their working order.

wetherell.co.uk