

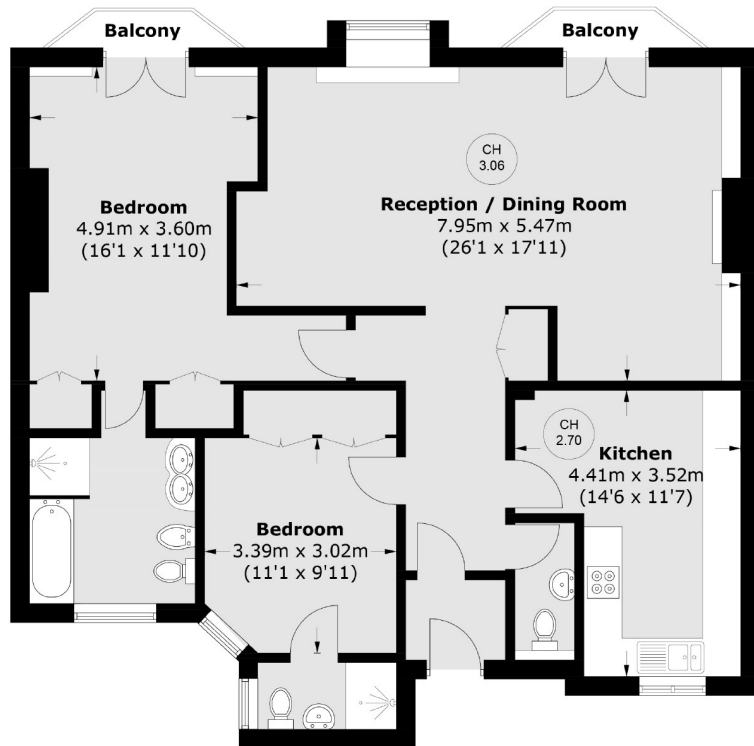


BERKELEY STREET

MAYFAIR W1J



A TWO BEDROOM, TWO BATHROOM APARTMENT IN A PERIOD BLOCK WITH A LIFT AND DAY PORTER. THE APARTMENT IS WELL PROPORTIONED AND HAS BEEN RECENTLY REDECORATED.



Total area (approx.): 105.5 sq. m (1,135.6 sq. ft)
Balcony (approx.): 2.7 sq. m (29.0 sq. ft)

We aim to make our particulars both accurate and reliable. However they are not guaranteed; nor do they form part of an offer or contract. If you require clarification on any points then please contact us, especially if you're traveling some distance to view. Please note that appliances and heating systems have not been tested and therefore no warranties can be given as to their working order. Energy Rating: C



Conveniently located close to Berkeley Square, Green Park tube station and a large number of world class restaurants and shopping.

FEATURES

- Two Double Bedrooms
- Two Bathrooms
- Newly Decorated
- Balcony
- Separate Kitchen
- Lift Access

Price: £1,200 Per week



WETHERELL
MAYFAIR'S FINEST PROPERTIES

102 Mount Street • London • W1K 2TH
T: 020 7529 5588 E: rentals@wetherell.co.uk

wetherell.co.uk

NO ONE KNOWS MAYFAIR BETTER THAN WETHERELL