



# WETHERELL

MAYFAIR'S FINEST PROPERTIES



## GREEN STREET, W1K

£2,000 PER WEEK

A recently refurbished apartment on the second floor of this Victorian period building with a lift on a premier street in north Mayfair.

The property is presented in excellent condition having undergone a recent renovation and benefits from a spacious reception room with plenty of space for dining and relaxing, a separate fully fitted modern kitchen, main bedroom with luxury en suite shower room, two further bedrooms and a family bathroom.

The apartment provides excellent entertaining space and further benefits from being located close to the amenities of Bond Street and Oxford Street.

GREEN STREET IS LOCATED TO THE EAST OF HYDE PARK OFF PARK LANE. THE PROPERTY IS WITHIN REACH OF THE MANY AMENITIES, RESTAURANTS AND SHOPS OFFERED BY OXFORD STREET, SOUTH AUDLEY STREET AND THEIR SURROUNDING AREAS.



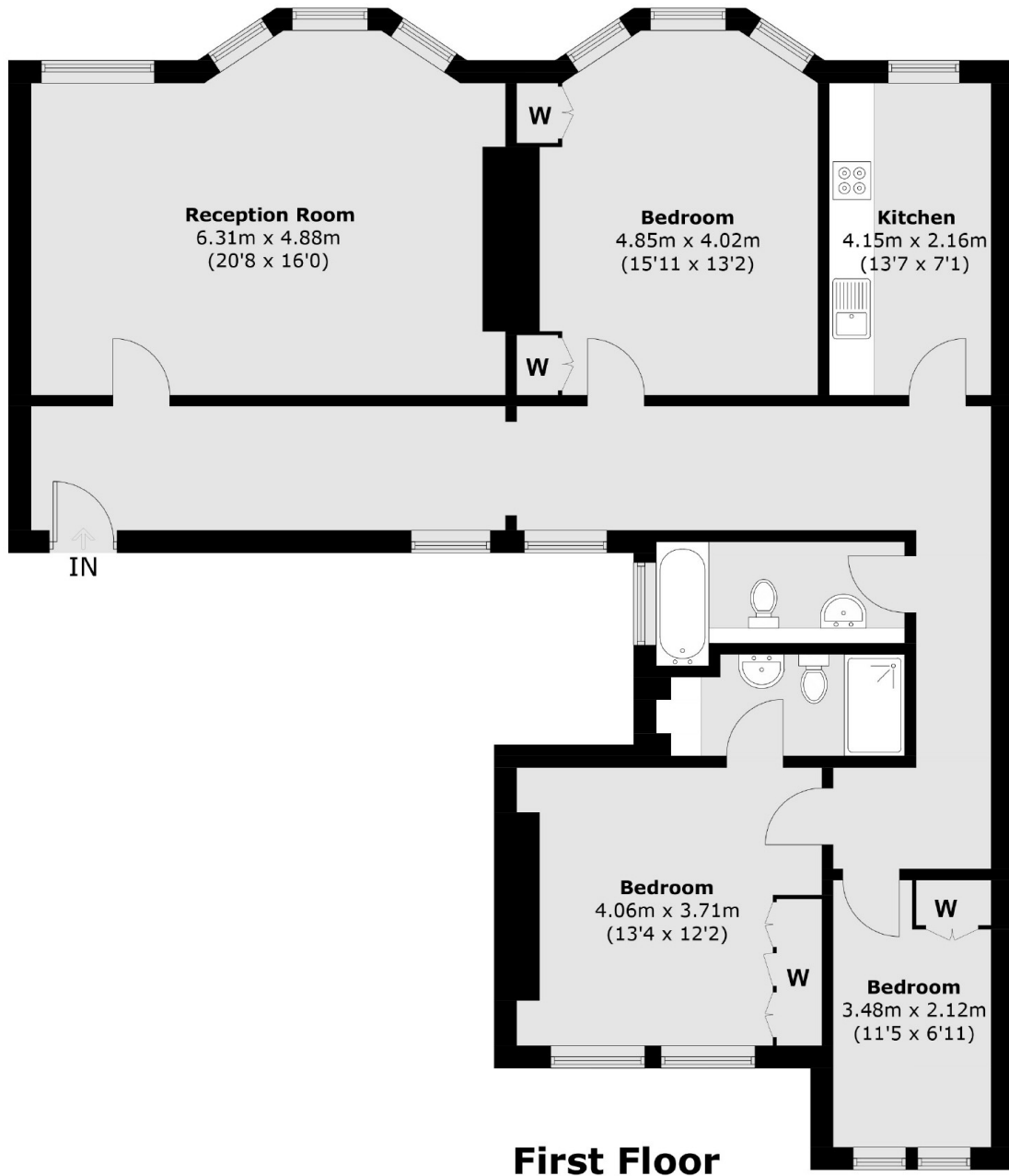
## FEATURES

- Three Bedrooms • Two Bathrooms • Recently Renovated • Second Floor (Lift Access) • Double Reception Room • Luxury Kitchen •





# GREEN STREET, LONDON, W1K



Total area (approx.): 119.4 sq. m (1,285.2 sq. ft)