



**WETHERELL**  
MAYFAIR'S FINEST PROPERTIES



## MADDOX STREET, W1S

£1,700,000

A contemporary 3 bedroom duplex on the top two floors of a prestigious development in Mayfair.

Situated moments from New Bond Street, this apartment is immaculately presented throughout and measures 1006 sq. Ft. The third floor comprises a separate kitchen and impressive open plan reception/dining room with large sash windows allowing an abundance of natural light from the south facing aspect overlooking Maddox Street.

The fourth floor has a large principal suite with en suite shower room, built in storage and an impressive vaulted ceiling. There is also an additional bedroom and a separate guest shower room and stairs lead down to the third bedroom on the half landing.

MADDOX STREET IS SITUATED BETWEEN REGENT STREET AND GROSVENOR SQUARE, EXCEPTIONALLY WELL PLACED TO ENJOY WORLD CLASS SHOPPING, DINING AND ENTERTAINMENT INCLUDING MANY OF LONDON'S BEST PRIVATE MEMBERS CLUBS.



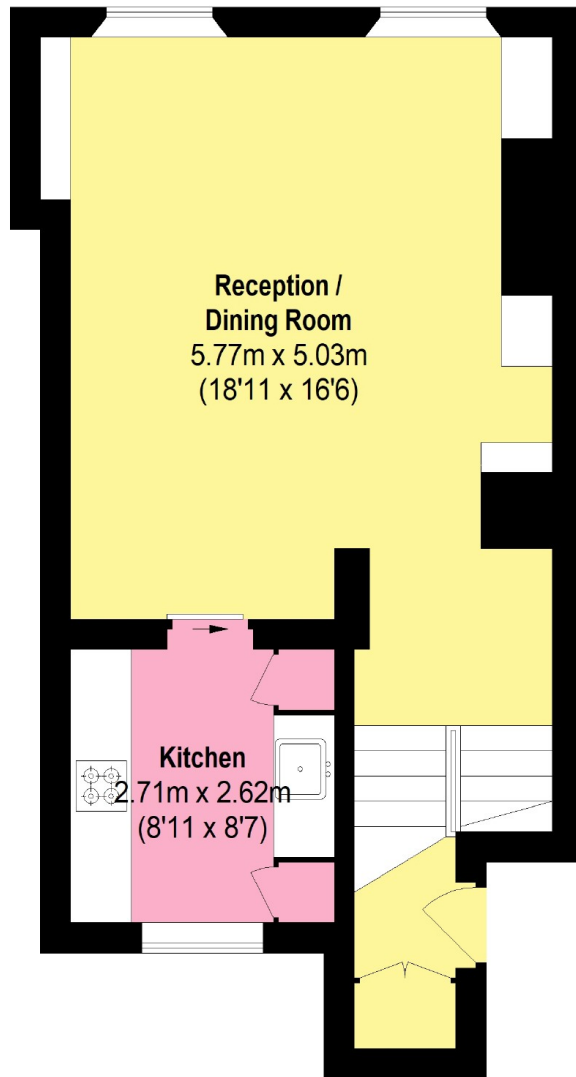
## FEATURES

- Three Bedrooms • Two Bathrooms • Contemporary Design • Vaulted Ceiling • Duplex • Long Lease •

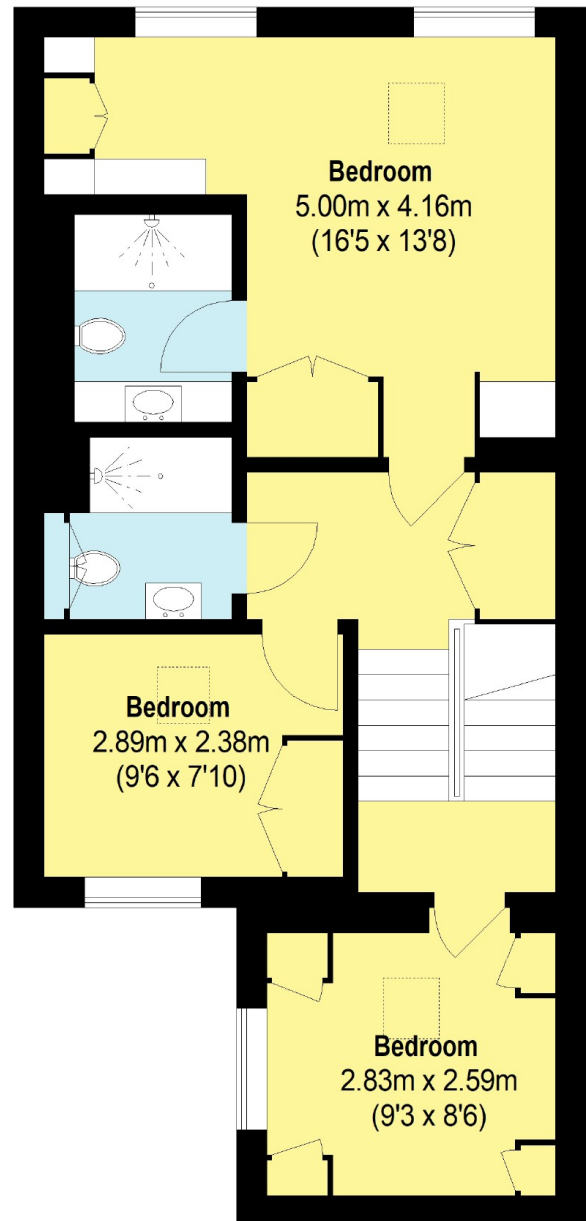




# MADDOX STREET, LONDON, W1S



**Third Floor**



**Fourth Floor**

Total area (approx.): 93.5 sq. m (1006 Sq. ft)