



WETHERELL

MAYFAIR'S FINEST PROPERTIES



MADDOX STREET, W1S

£1,850,000

A contemporary 3 bedroom duplex on the top two floors of a prestigious development in Mayfair.

Situated moments from New Bond Street, this apartment is immaculately presented throughout and measures 1006 sq. Ft. The third floor comprises a separate kitchen and impressive open plan reception/dining room with large sash windows allowing an abundance of natural light from the south facing aspect overlooking Maddox Street.

The fourth floor has a large principal suite with en suite shower room, built in storage and an impressive vaulted ceiling. There is also an additional bedroom and a separate guest shower room and stairs lead down to the third bedroom on the half landing.

MADDOX STREET IS SITUATED BETWEEN REGENT STREET AND GROSVENOR SQUARE, EXCEPTIONALLY WELL PLACED TO ENJOY WORLD CLASS SHOPPING, DINING AND ENTERTAINMENT INCLUDING MANY OF LONDON'S BEST PRIVATE MEMBERS CLUBS.

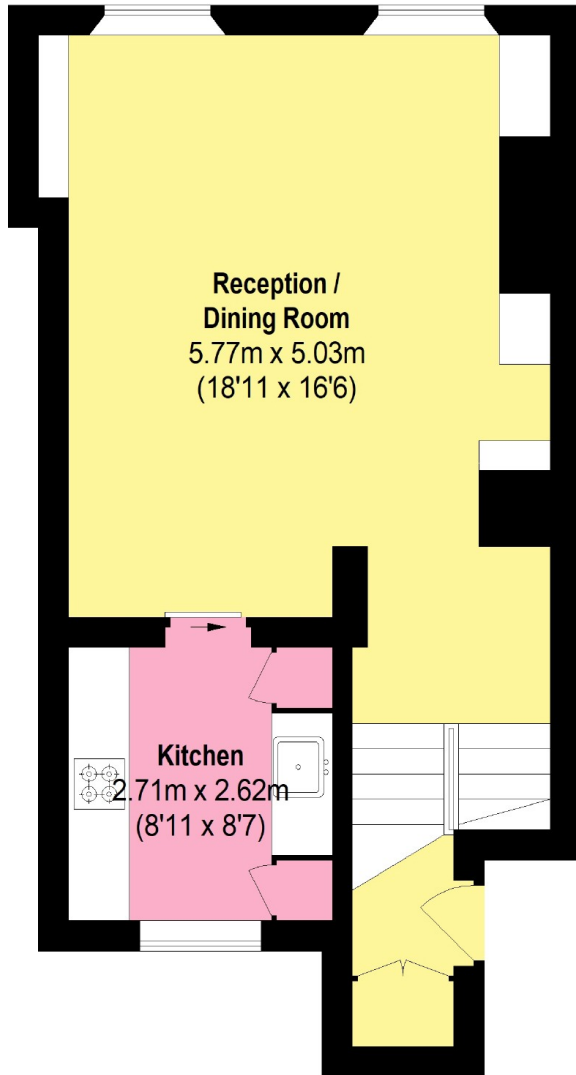


FEATURES

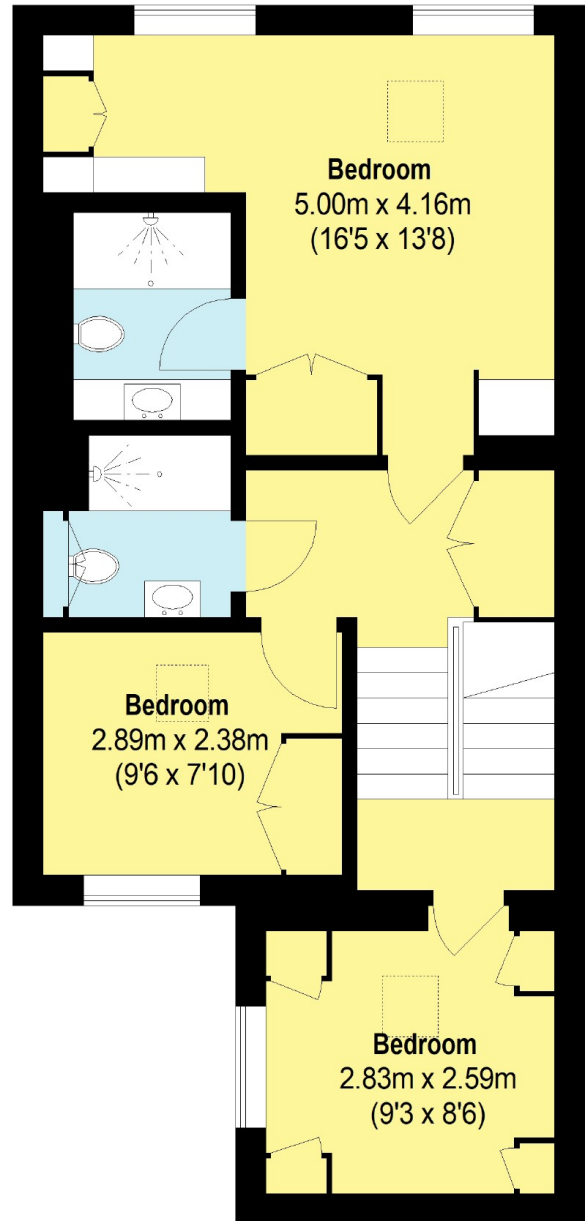
- Three bedrooms • Two bathrooms • Contemporary design • Vaulted ceiling • Duplex • Long lease •



MADDOX STREET,
LONDON, W1S



Third Floor



Fourth Floor

Total area (approx.): 93.5 sq. m (1006 Sq. ft)



WETHERELL
MAYFAIR'S FINEST PROPERTIES

102 Mount Street,
London, W1K 2TH
T: 020 7529 5566
E: sales@wetherell.co.uk

We aim to make our particulars both accurate and reliable. However they are not guaranteed; nor do they form part of an offer or contract. If you require clarification on any points then please contact us, especially if you're traveling some distance to view. Please note that appliances and heating systems have not been tested and therefore no warranties can be given as to their working order.

wetherell.co.uk