



**WETHERELL**  
MAYFAIR'S FINEST PROPERTIES



## ROSE & CROWN YARD, SW1Y

£925,000

A well-presented one bedroom apartment in the heart of St James's with parking and long leasehold.

This contemporary one bedroom apartment is situated on the second floor of this modern purpose built block in the centre of historic St James's. Measuring 674 square feet of lateral space, the apartment has a large reception room with Juliet balcony and sliding doors leading to the modern, fully integrated kitchen with Meile appliances.

The bedroom has built in wardrobes and three large windows allowing an abundance of natural light. The bathroom has both a walk-in shower and bath. The property comes with a secure single parking space and is conveniently located off King Street.

ROSE AND CROWN YARD IS A QUIET MEWS PERFECTLY LOCATED MOMENTS FROM ST JAMES'S SQUARE, ST JAMES'S PARK, GREEN PARK AND THE SEEMINGLY ENDLESS BOUTIQUES, SHOPS, RESTAURANTS AND BARS OF JERMYN STREET, PICCADILLY & MAYFAIR





## FEATURES

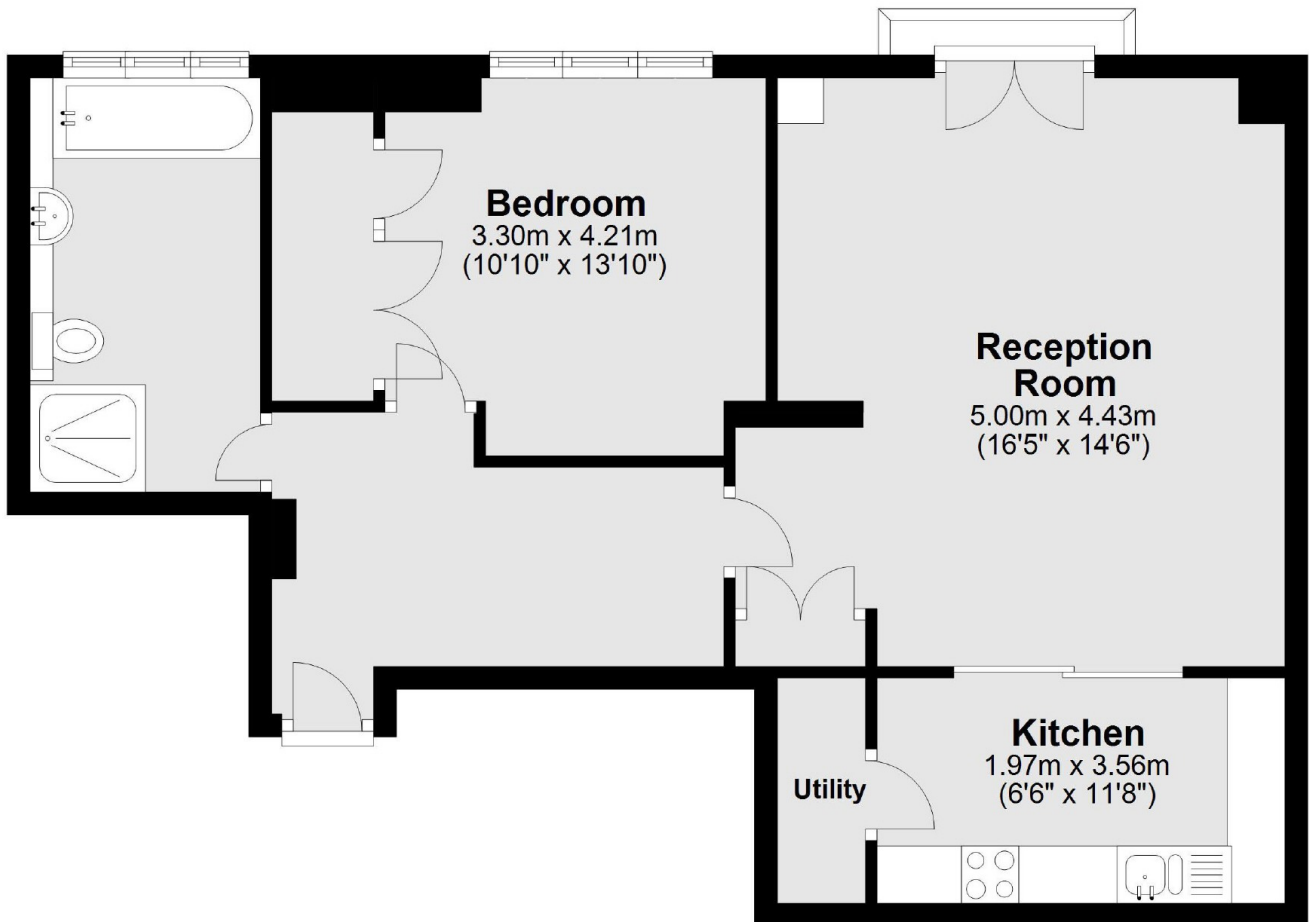
- One Bedroom • One Bathroom • Juliet Balcony • Secure Parking • Long lease •





ROSE & CROWN YARD,  
LONDON, SW1Y

**Second Floor**



Total area: approx. 62.6 sq. metres (674.0 sq. feet)