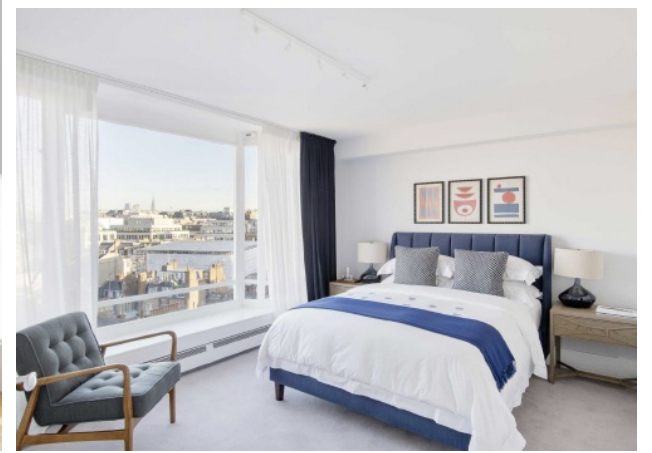
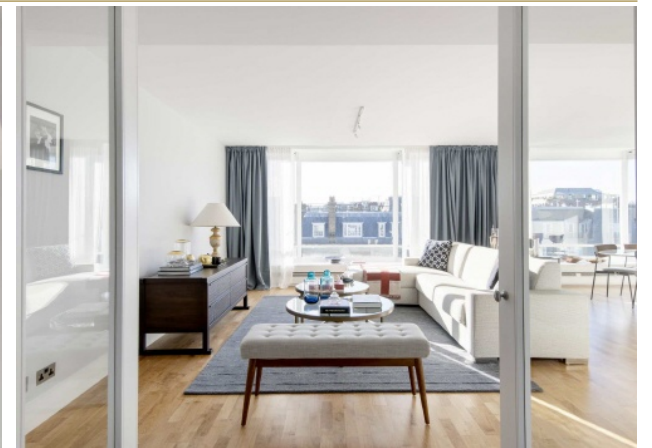




BOURDON STREET

MAYFAIR W1K



A BRIGHT AND AIRY SEVENTH FLOOR THREE DOUBLE BEDROOM APARTMENT (APPROX. 1,375 SQ.FT.) WITH LARGE DOUBLE RECEPTION ROOM OFFERING SECURE, STYLISH AND CONTEMPORARY LIVING WITH FAR REACHING VIEWS OVER MAYFAIR AND THE WEST END.



This family apartment comes with access to an expansive communal roof terrace. The newly refurbished interior is light and modern with a double reception room, separate fully equipped kitchen, floor to ceiling windows and far reaching views over Mayfair and the West End.

The apartment is located in an exclusive purpose-built block with its own Resident House Manager, moments from Mount Street, Berkeley Square and New Bond Street'.

Located off Berkeley Square in the heart of Mayfair, Grosvenor Hill Court is very close to Regent Street, Bond Street and Green Park stations.

The main entrance hallway leads to the three double bedrooms, one with en-suite bathroom and two with shared separate bathroom.

FEATURES

- Three Double Bedrooms
- Double Reception Room
- Resident Porter
- Communal Roof Terrace
- Furnished and Interior Designed
- Seventh Floor (Lift Access)

Price: £3,450 Per week

We aim to make our particulars both accurate and reliable. However they are not guaranteed; nor do they form part of an offer or contract. If you require clarification on any points then please contact us, especially if you're traveling some distance to view. Please note that appliances and heating systems have not been tested and therefore no warranties can be given as to their working order. Energy Rating: C



WETHERELL
MAYFAIR'S FINEST PROPERTIES

102 Mount Street • London • W1K 2TH
T: 020 7529 5588 E: rentals@wetherell.co.uk

wetherell.co.uk

NO ONE KNOWS MAYFAIR BETTER THAN WETHERELL