

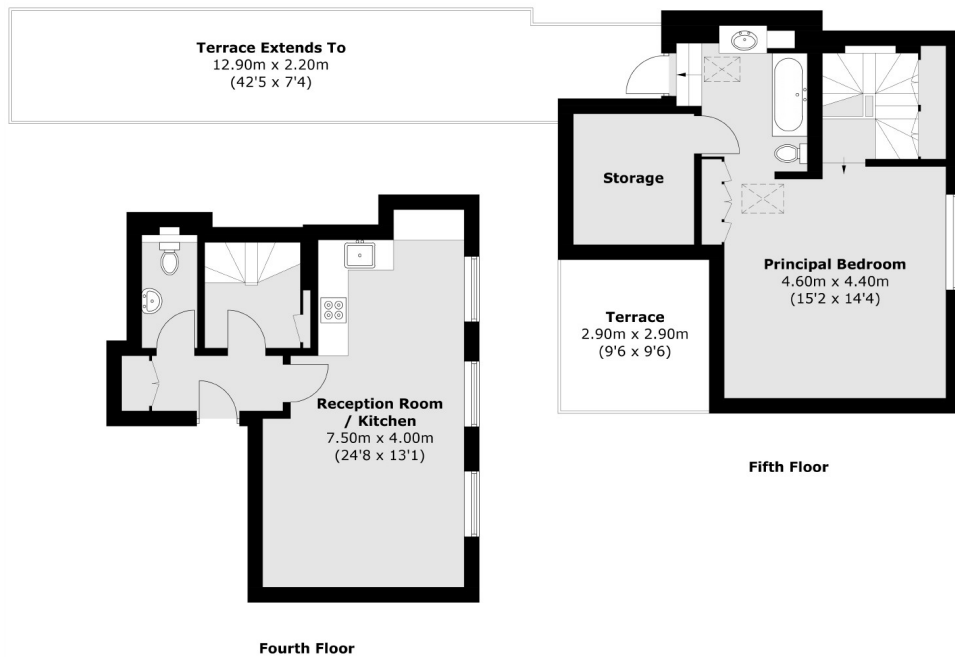


# ALBEMARLE STREET

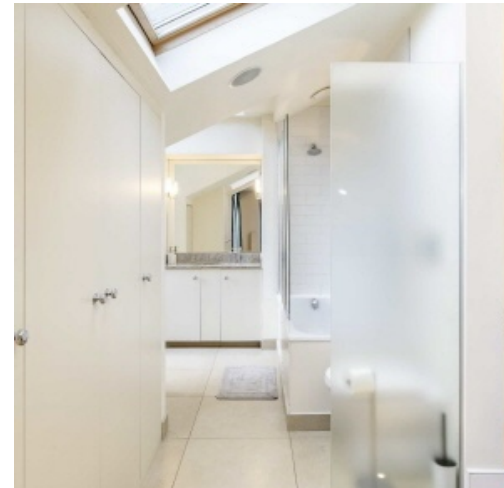
## MAYFAIR W1S



A SPACIOUS ONE BEDROOM SPLIT-LEVEL FLAT LOCATED IN A WELL MAINTAINED GEORGIAN BUILDING WITH A LARGE PRIVATE ROOF TERRACE.



Total area (approx.): 76 sq. m (812.0 sq. ft)  
Terrace (approx.): 35.5 sq. m (382.1 sq. ft)



Albemarle Street is ideally located for Green Park tube station on the Piccadilly, Victoria and Jubilee lines. Piccadilly Circus and the amenities and attractions of the West End are close by.

#### FEATURES

- Spacious Double Bedroom
- Modern Fixtures & Fittings
- Wooden Flooring
- Split-Level
- Private Roof Terrace
- Excellent Location

Price: £825 Per week

We aim to make our particulars both accurate and reliable. However they are not guaranteed; nor do they form part of an offer or contract. If you require clarification on any points then please contact us, especially if you're traveling some distance to view. Please note that appliances and heating systems have not been tested and therefore no warranties can be given as to their working order. Energy Rating: E



**WETHERELL**  
MAYFAIR'S FINEST PROPERTIES

102 Mount Street • London • W1K 2TH  
T: 020 7529 5588 E: rentals@wetherell.co.uk

wetherell.co.uk

NO ONE KNOWS MAYFAIR BETTER THAN WETHERELL