

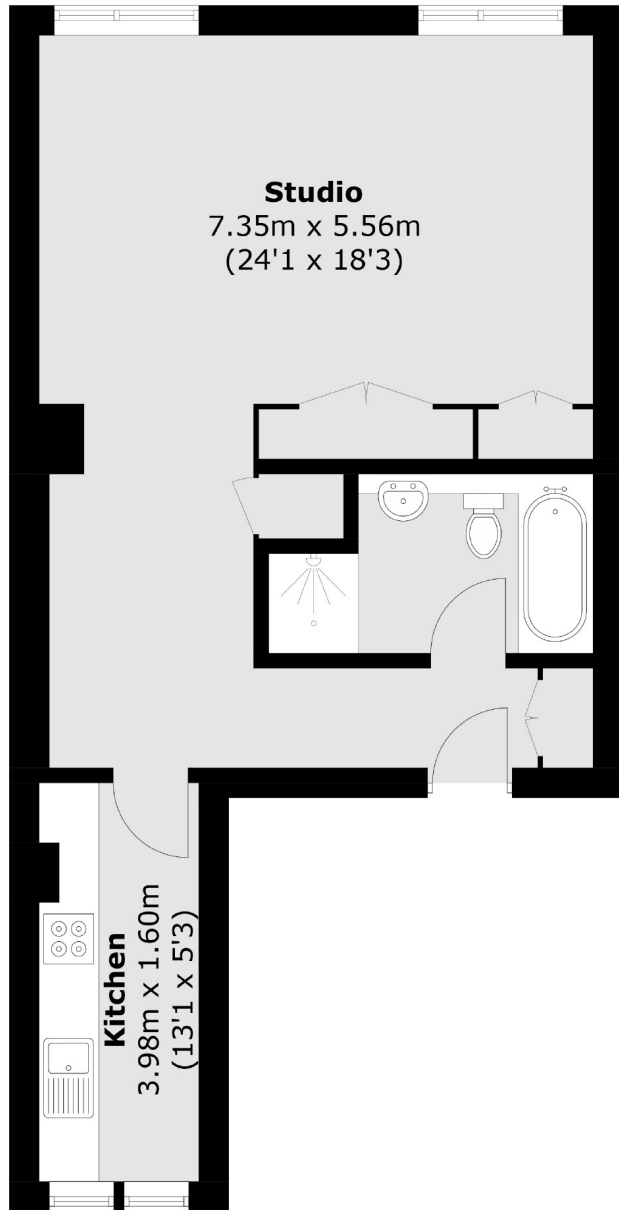


# PALL MALL

## ST JAMES'S SW1Y



A SUPERB STUDIO APARTMENT WITH FANTASTIC SOUTHERLY VIEWS OVER PALL MALL, THE MALL, ST JAMES'S PALACE AND ST JAMES'S PARK.



Total area (approx.): 47.6 sq. m (512.3 sq. ft)



A superb studio apartment with fantastic southerly views over Pall Mall, The Mall, St James's Palace and St James's Park. This property has been meticulously designed and benefits from air-conditioning.

The property is conveniently located on Pall Mall close to St James' Park and Green Park underground station (Jubilee, Piccadilly and Victoria lines).

#### FEATURES

- Studio Apartment
- Modern Fixtures & Fittings
- Wooden Flooring
- Built in Storage
- Separate Kitchen
- Lift Access

Price: £625 Per week

We aim to make our particulars both accurate and reliable. However they are not guaranteed; nor do they form part of an offer or contract. If you require clarification on any points then please contact us, especially if you're traveling some distance to view. Please note that appliances and heating systems have not been tested and therefore no warranties can be given as to their working order. Energy Rating: B



**WETHERELL**  
MAYFAIR'S FINEST PROPERTIES

102 Mount Street • London • W1K 2TH  
T: 020 7529 5588 E: rentals@wetherell.co.uk

wetherell.co.uk