



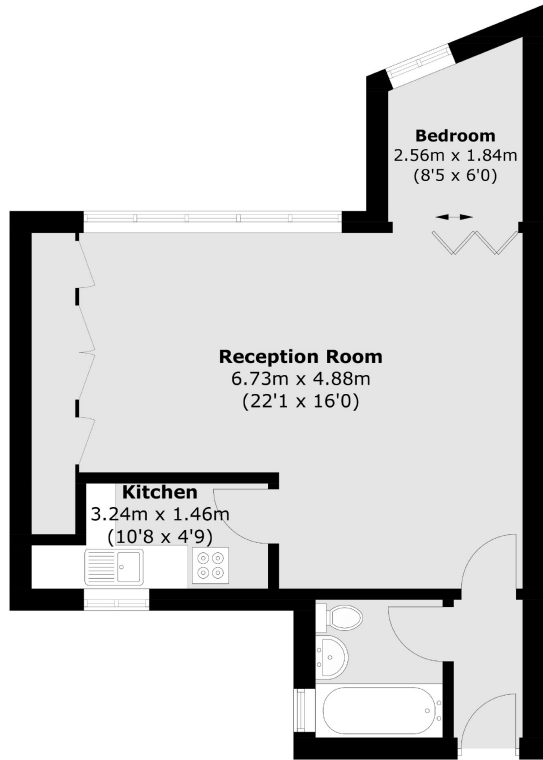
# CHARLES STREET

MAYFAIR W1J



A BRIGHT AND SPACIOUS STUDIO APARTMENT LOCATED IN THIS BEAUTIFUL PERIOD BUILDING WITHIN WALKING DISTANCE TO BERKELEY SQUARE AND GREEN PARK UNDERGROUND STATION.





Total area (approx.): 43.3 sq. m (466.1 sq. ft)

A bright and spacious studio apartment located in this beautiful period building within walking distance to Berkeley Square and Green Park Underground station.

Set in the heart of peaceful Mayfair Village this magnificent property is only a few streets away from some of the world's finest restaurants and luxury retail destinations.

#### FEATURES

- Well-Appointed Studio
- Grade II Listed Building
- New Bathroom
- High Ceilings
- Excellent Location
- Furnished

Price: £675 Per week

We aim to make our particulars both accurate and reliable. However they are not guaranteed; nor do they form part of an offer or contract. If you require clarification on any points then please contact us, especially if you're traveling some distance to view. Please note that appliances and heating systems have not been tested and therefore no warranties can be given as to their working order. Energy Rating: D



**WETHERELL**  
MAYFAIR'S FINEST PROPERTIES

102 Mount Street • London • W1K 2TH  
T: 020 7529 5588 E: rentals@wetherell.co.uk

wetherell.co.uk

NO ONE KNOWS MAYFAIR BETTER THAN WETHERELL