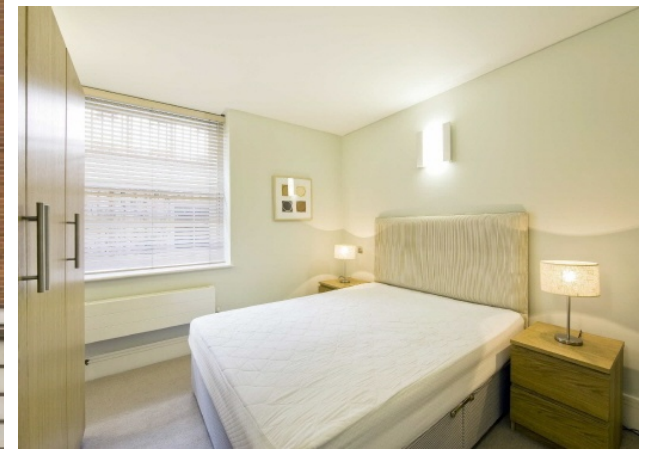




DUNRAVEN STREET

MAYFAIR W1K



THIS ONE BEDROOM APARTMENT PROVIDES WELL PROPORTIONED LIVING AND STYLISH NEUTRAL DECOR IN THIS POPULAR PERIOD BUILDING, ON A QUIET SIDE ROAD IN CENTRAL MAYFAIR.



Dunraven Street is perfectly located for some of London's finest restaurants, the green expanses of Hyde Park and excellent transport links, including Marble Arch and Bond Street tube stations.



FEATURES

- Spacious Double Bedroom
- Open Plan Kitchen
- Contemporary Bathroom
- Built-in Storage
- Furnished
- Excellent Location

Price: £550 Per week

We aim to make our particulars both accurate and reliable. However they are not guaranteed; nor do they form part of an offer or contract. If you require clarification on any points then please contact us, especially if you're traveling some distance to view. Please note that appliances and heating systems have not been tested and therefore no warranties can be given as to their working order. Energy Rating: D



WETHERELL
MAYFAIR'S FINEST PROPERTIES

102 Mount Street • London • W1K 2TH
T: 020 7529 5588 E: rentals@wetherell.co.uk

wetherell.co.uk

NO ONE KNOWS MAYFAIR BETTER THAN WETHERELL